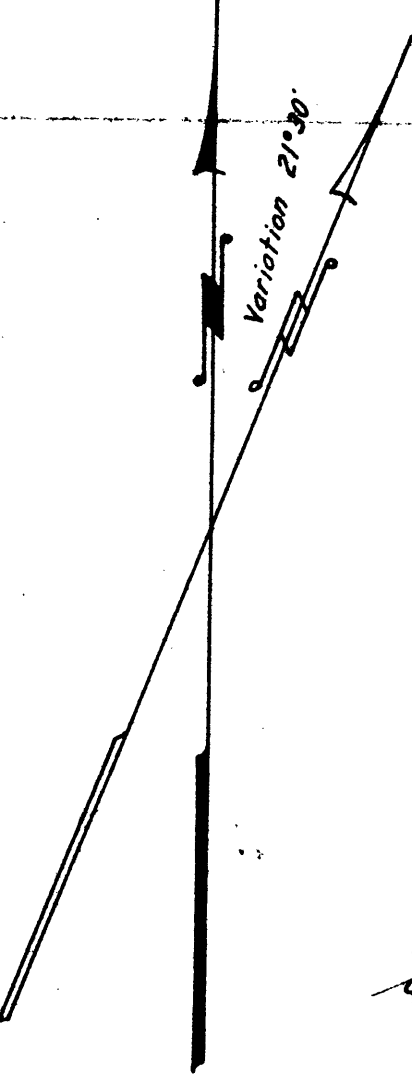
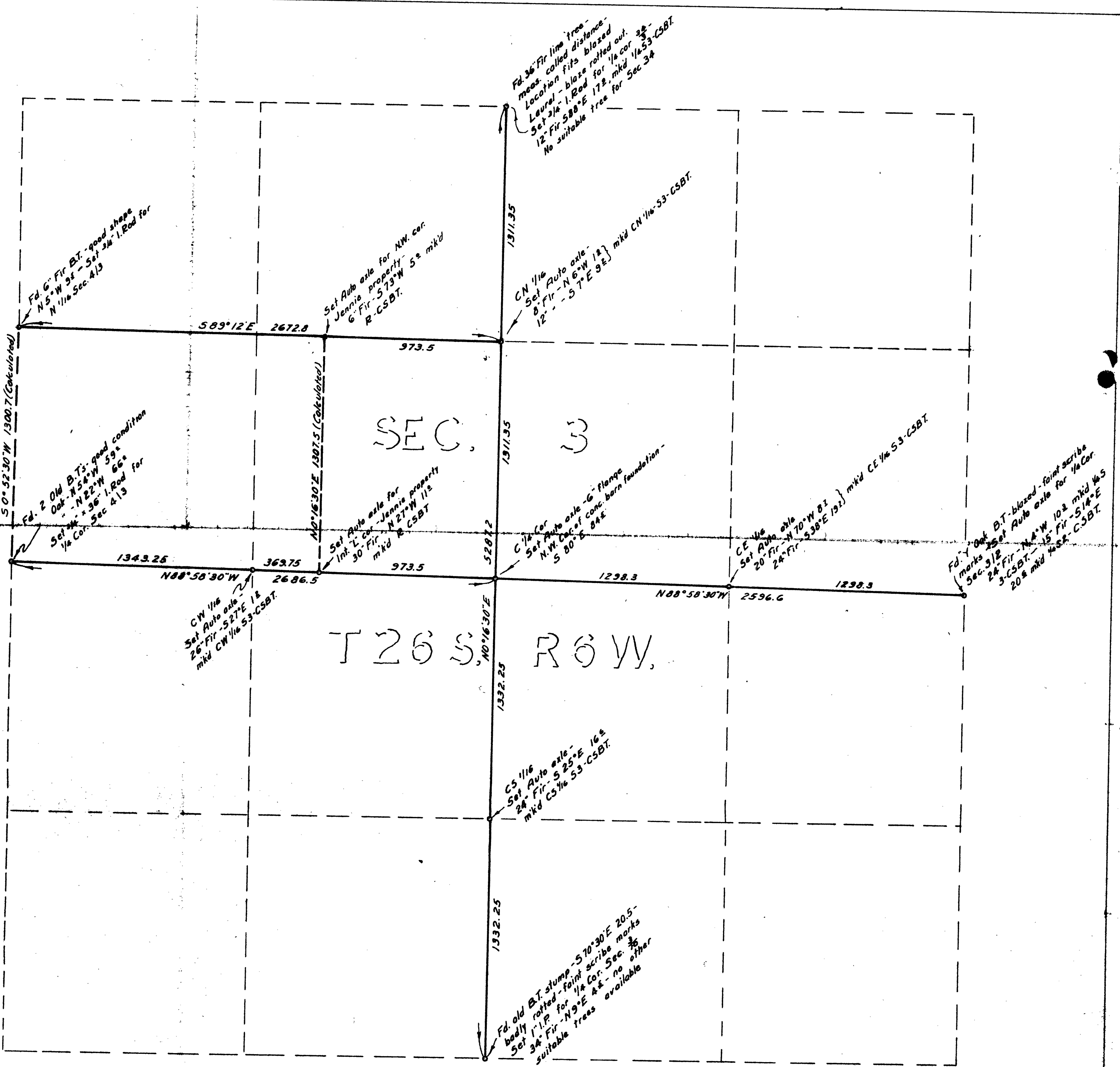


52-91 N
19/68 272 5 2



COUNTY SURVEYORS OFFICE
DOUGLAS COUNTY. OREGON

**SURVEY TO ESTABLISH PROPERTY
CORNERS IN SEC.3.T26S.R6W.**



BEN. B. IRVING
SURVEYED NOVEMBER, 1949
A.R. EVANS

COUNTY SURVEYOR
BY
DEPUTY

SCALE 1" = 400'