

FD 1 1/4" P. WC. 10
S.E. Cor. D.L.G. No. 45

Set Bridge Spike, with
3/4" Rod alongside
N 1° 04' E 34.3

ROAD
69 6 4

(County W. 170)
N 1° 04' E

WILBUE NORTH
1870

Parcel 3
2.26 Acres

Parcel 2
1.55 Acres

Parcel 1
1.16 Acres

Parcel 4
69.27 Acres

E. G. GODFREY
(Cert. of Title No. 7285)

NOTE:—
Bearings shown are True, based on
Solar Observation made July 25, 1949.



COUNTY SURVEYOR'S OFFICE
DOUGLAS COUNTY, OREGON

SURVEY FOR DEED DESCRIPTION,
IN SECTIONS 6, & 7, T26 S., R 5 W.

BEN. B. IRVING
SURVEY COMPLETED AUGUST 7, 1949
A.R. EVANS

COUNTY SURVEYOR
BY
DEPUTY

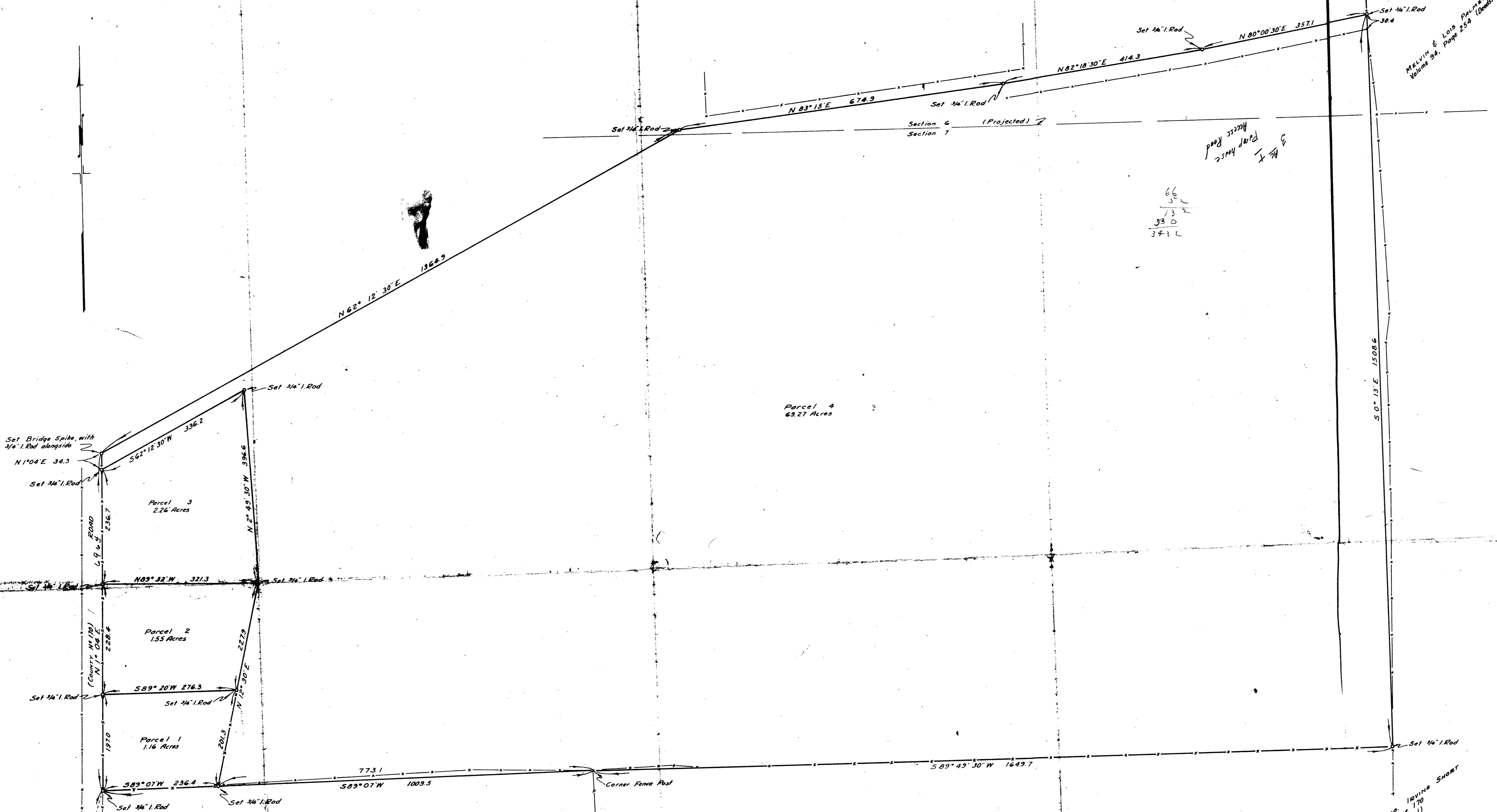
SCALE 1" = 100'

ALBERTA & Geo. Irving Snow
Volume 28, Page 170
(Circuit Court Journal)

MELVIN & Lois Palmer
Volume 94, Page 254 (Deeds)

66
5
3
330
3432

3
R
X
Pump House
Access Road



CS FILE FOLDER

CONTAINS

MORE

INFORMATION