

COUNTY SURVEYORS FILE DATA
DO NOT REMOVE FROM OFFICE

COUNTY SURVEYORS OFFICE
DOUGLAS COUNTY OREGON

LOTS 18-24 incl. BLOCK 52

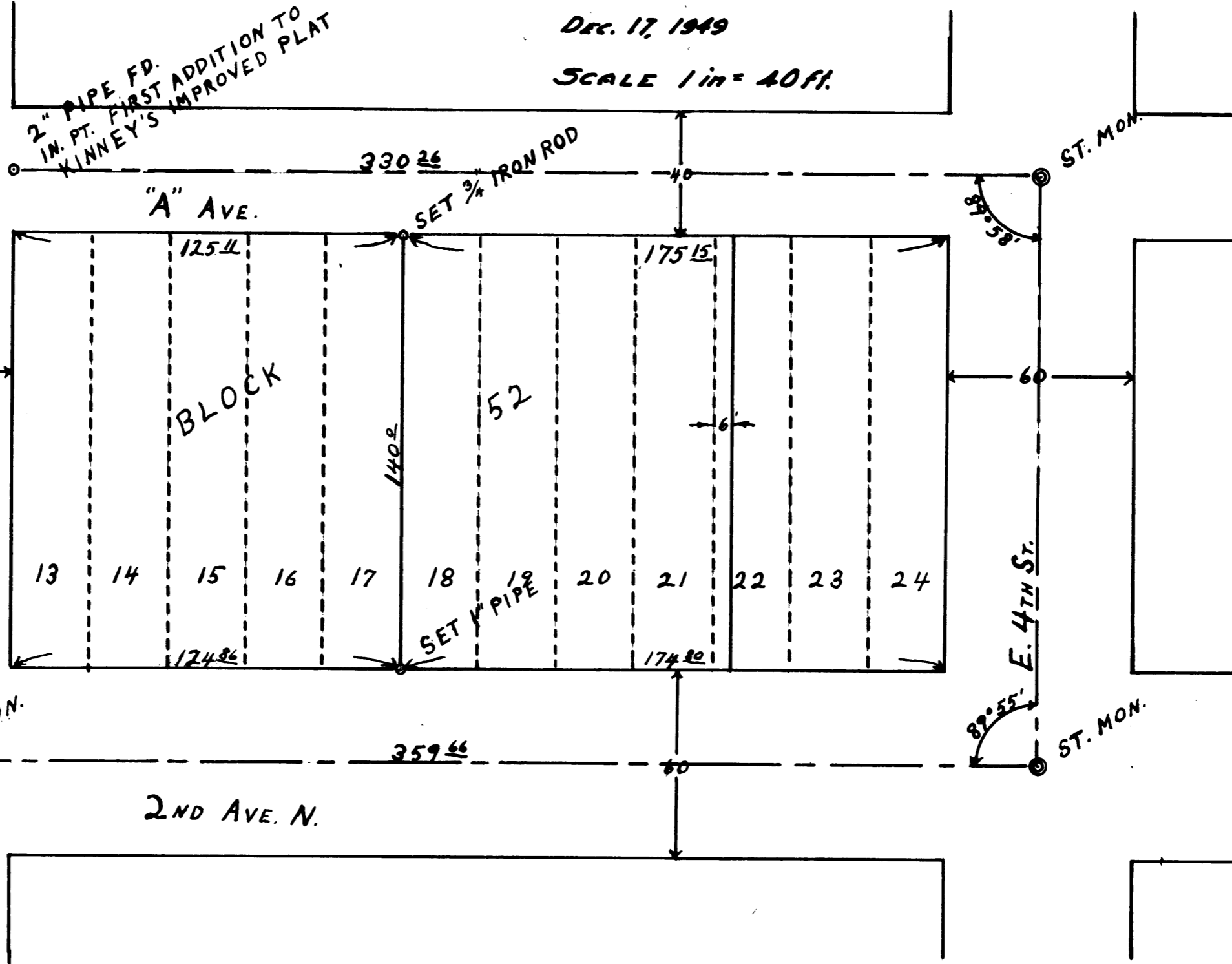
~~FIRST ADDITION~~ KINNEY'S IMPROVED PLAT
BEN. B. IRVING COUNTY SURVEYOR
N. E. RICHARDSON DEPUTY COUNTY SURVEYOR

REGISTERED
OREGON
LAND SURVEYOR

N. E. Richardson
JULY 7, 1944
N. E. RICHARDSON
35

DEC. 17, 1949

SCALE 1 in = 40 ft.



T 19