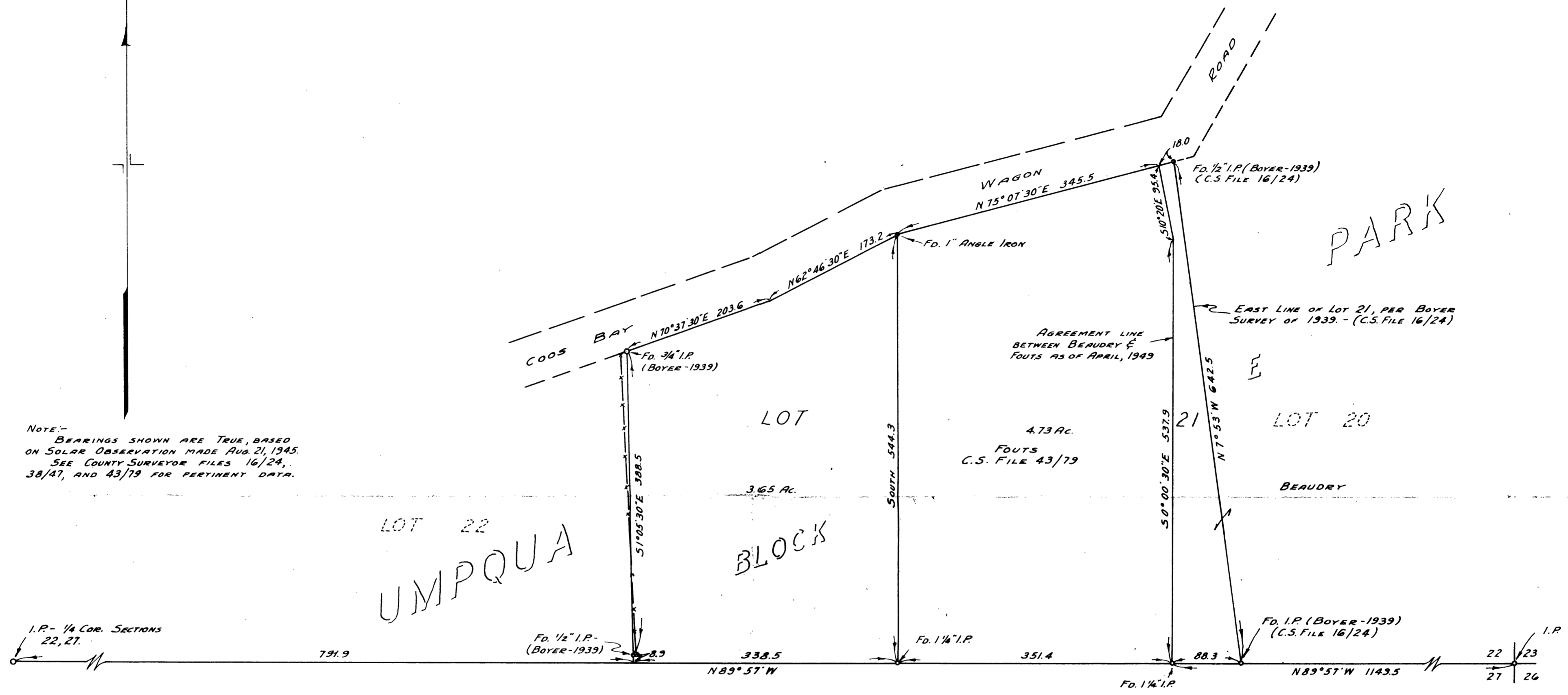


NOTE: BEARINGS SHOWN ARE TRUE, BASED ON SOLAR OBSERVATION MADE AUG. 21, 1945. SEE COUNTY SURVEYOR FILES 16/24, 38/47, AND 43/79 FOR PERTINENT DATA.



LOT 22  
UMPQUA

BLOCK

PARK

COUNTY SURVEYOR'S OFFICE  
DOUGLAS COUNTY, OREGON

SURVEY TO ESTABLISH CORNERS OF  
PORTION OF LOT 21, BLOCK E, OF  
UMPQUA PARK.



BEN. B. IRVING  
SURVEYED JUNE 20, 1951

COUNTY SURVEYOR  
SCALE 1" = 100'

C.S. FILE No. 43/79-2