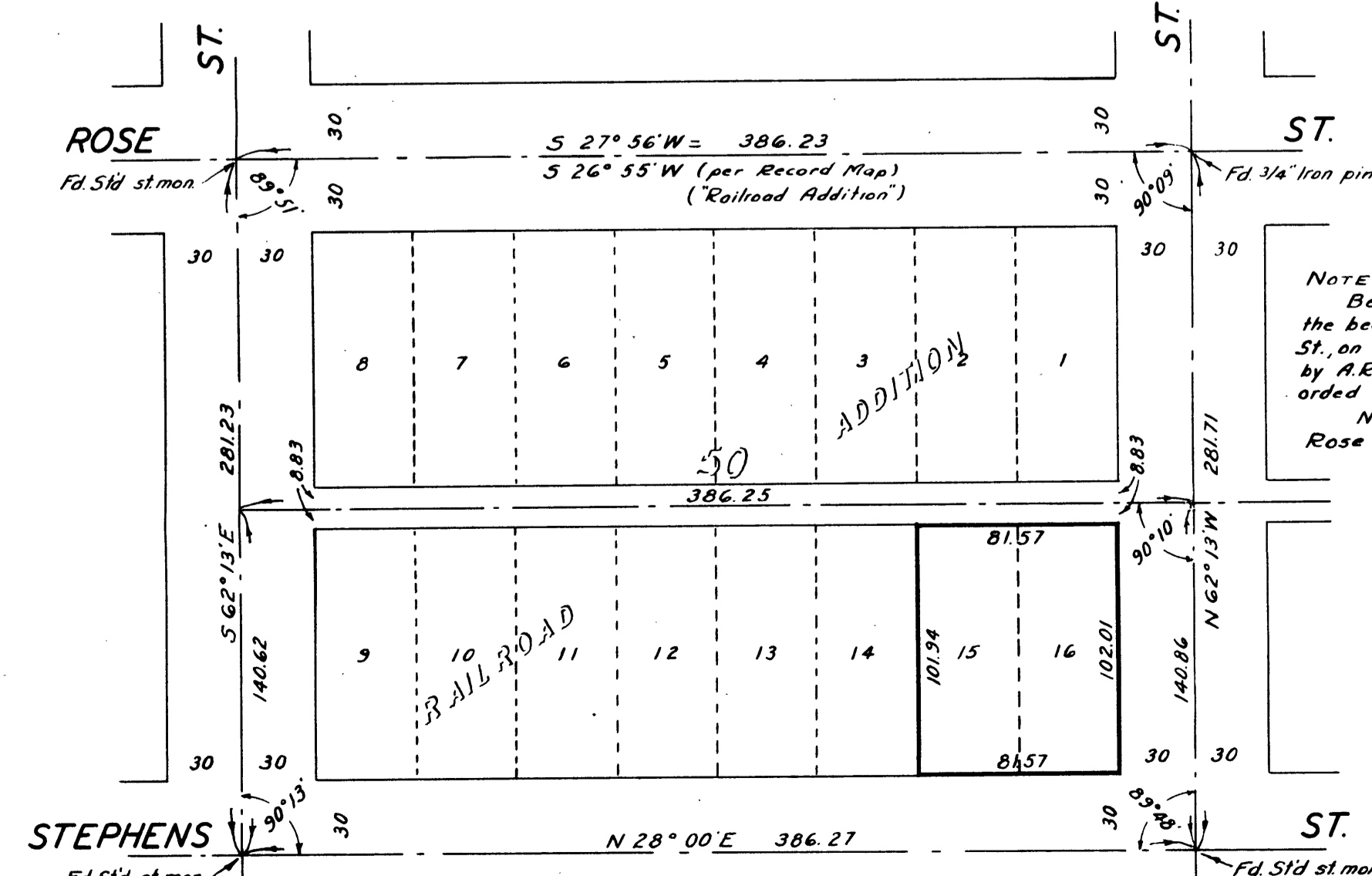


DETAIL MAP  
SCALE 1" = 8'



LOCATION MAP  
SCALE 1" = 60'

NOTE: -  
Bearings shown are based on the bearing shown on E. of Stephens St., an "Flat of Roseburg" as surveyed by A.R. Flint in 1813, and filed and recorded in the Office of the County Clerk. Note equation of bearings on Rose St.

COUNTY SURVEYOR'S OFFICE  
DOUGLAS COUNTY, OREGON

SURVEY OF LOTS 15, & 16,  
BLOCK 50, RAILROAD ADDITION,  
CITY OF ROSEBURG, OREGON.

BEN. B. IRVING COUNTY SURVEYOR  
SURVEYED FEBRUARY 1.2.3.1949 BY  
N.E. RICHARDSON L.S. 35 DEPUTY  
SCALES AS SHOWN