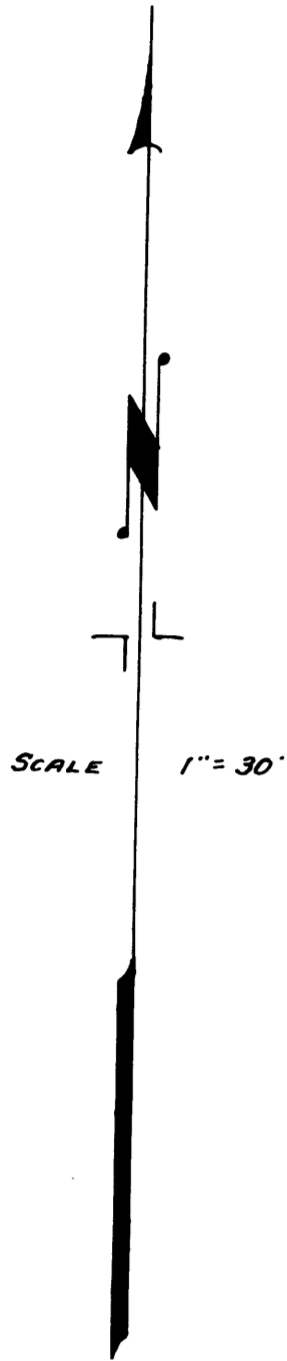
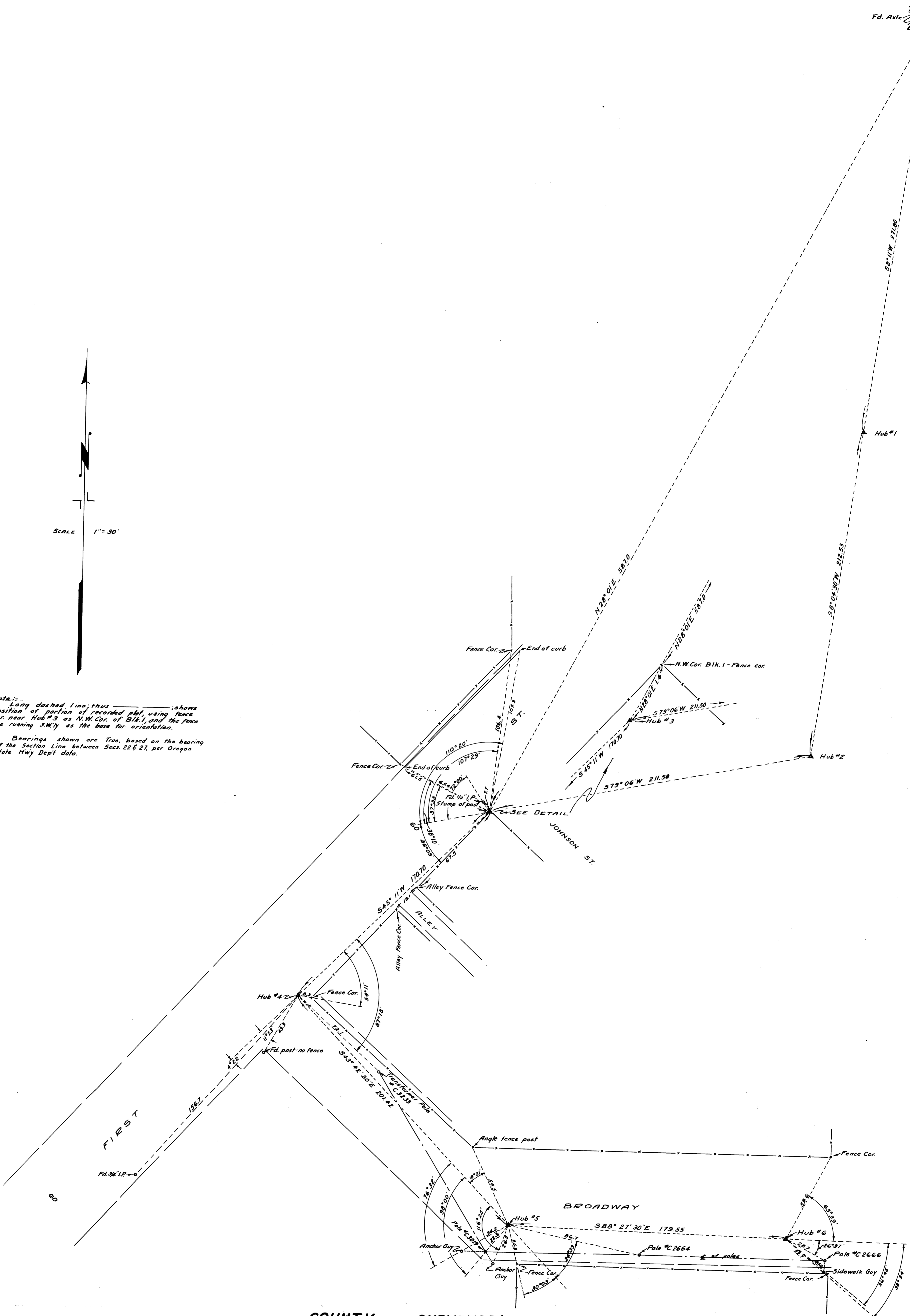


21 22
28 27



Note: Long dashed line; this shows position of portion of recorded plat, using fence cor. near Hub #3 as NW cor. of Blk. 1, and the fence line running S.W. by as the base for orientation.
Bearings shown are True, based on the bearing of the Section Line between Secs. 22 E 27, per Oregon State Hwy Dept. data.



COUNTY SURVEYOR'S OFFICE
DOUGLAS COUNTY, OREGON
POSITION OF POWER LINE, RELATIVE TO BLK. 6,
"HOWLAND AND LAMB'S" ADDITION TO MYRTLE
CREEK

BEN. B. IRVING COUNTY SURVEYOR
SURVEYED DEC. 22, 1948 BY
A. R. EVANS DEPUTY



CS FILE FOLDER

CONTAINS

MORE

INFORMATION