

COUNTY SURVEYORS FILE DATA
DO NOT REMOVE FROM OFFICE

MAP

SHOWING LOCATION OF
RESIDENCE ON & BOUNDARIES OF

LOT 2, BLOCK 69, SUBDIVISION "A"
KINNEY'S IMPROVED PLAT, ROSEBURG

IN THE
COUNTY OF DOUGLAS
AND
STATE OF OREGON

SURVEYED 8-25-49

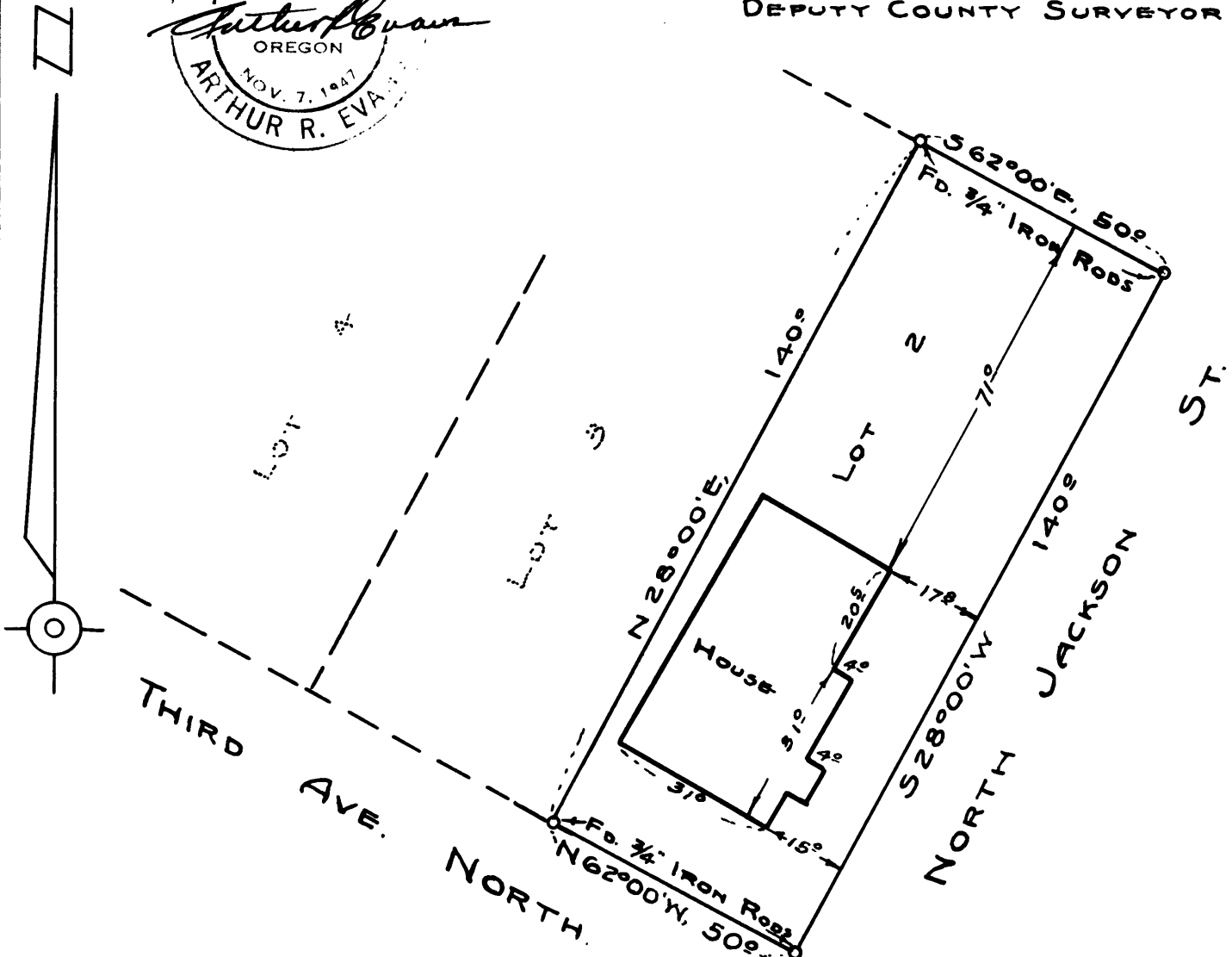
SCALE 1"=30'

I HEREBY CERTIFY THAT I HAVE SURVEYED THE ABOVE DESCRIBED PROPERTY, AND THAT THE IMPROVEMENTS SHOWN AND DESCRIBED HEREON, ARE WITHIN THE PROPERTY LINES



Arthur R. Evans

ARTHUR R. EVANS
DEPUTY COUNTY SURVEYOR



CS 43/51-1

FILE 51-DRAWER 42