

MAP

SHOWING LOCATION OF
RESIDENCE ON & BOUNDARIES OF

LOT 3, BLOCK 2, STEWART MEADOWS"

IN THE
COUNTY OF DOUGLAS
AND
STATE OF OREGON

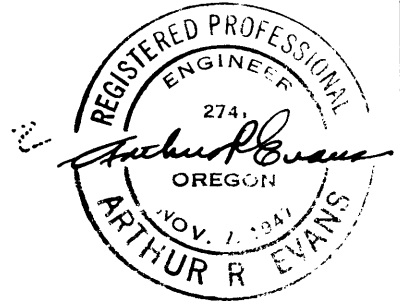
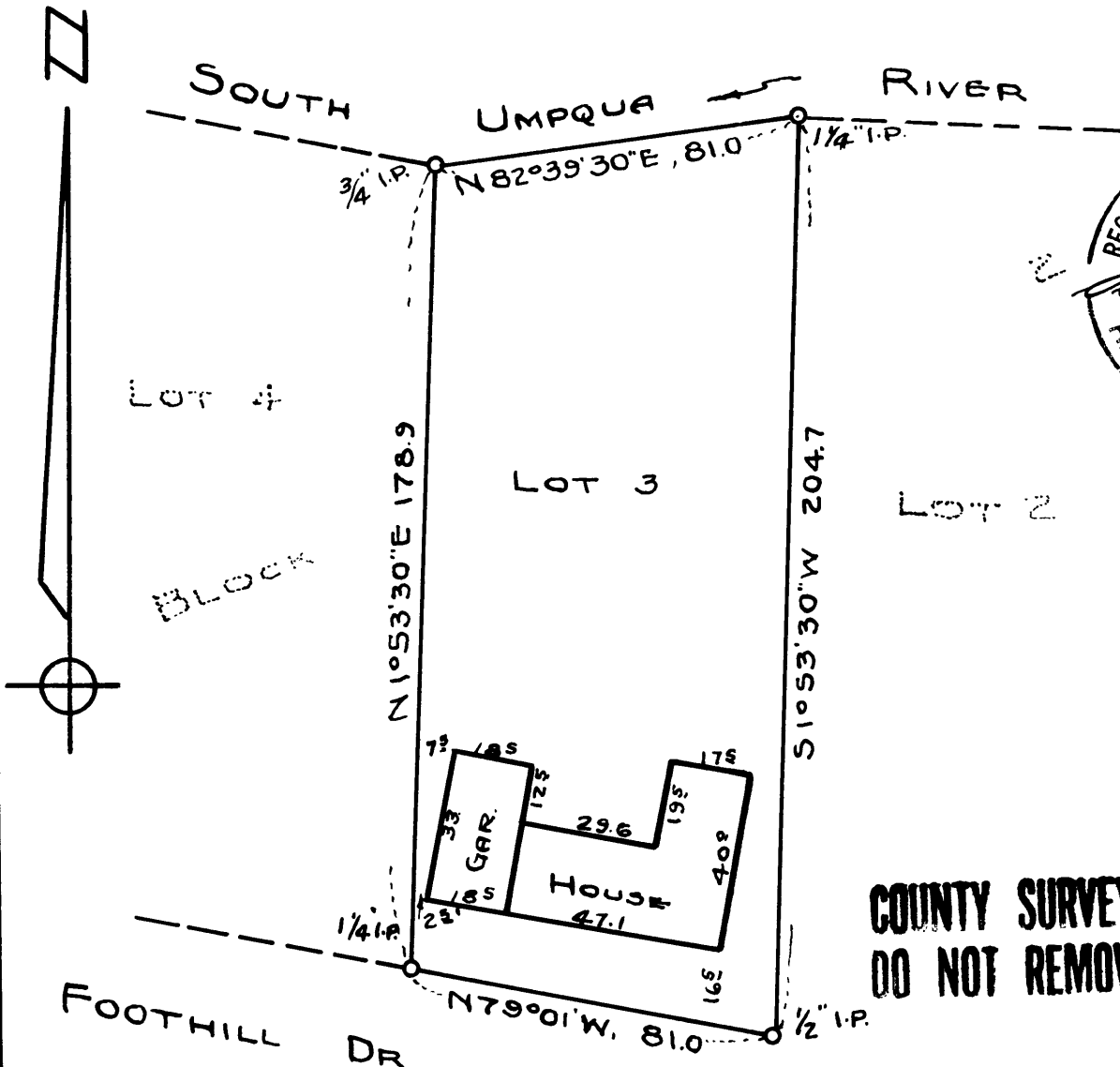
SURVEYED 3-15-50

SCALE 1" = 40'

I HEREBY CERTIFY THAT I HAVE SURVEYED THE ABOVE DESCRIBED PROPERTY AND THAT THE IMPROVEMENTS SHOWN AND DESCRIBED HEREON ARE WITHIN THE PROPERTY LINES

Arthur R. Evans

ARTHUR R. EVANS
DEPUTY COUNTY SURVEYOR



COUNTY SURVEYORS FILE DATA
DO NOT REMOVE FROM OFFICE

CS 43/49-2