

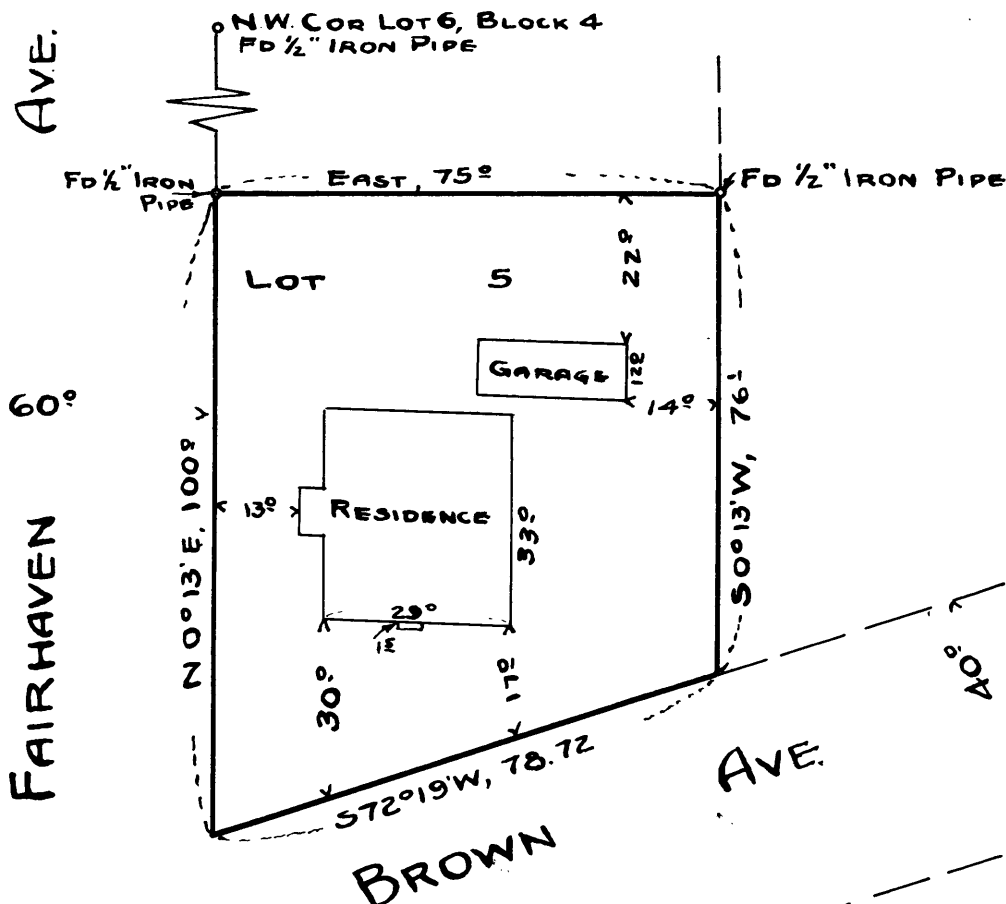
MAP  
 SHOWING LOCATION OF  
 RESIDENCE ON & BOUNDARIES OF  
 LOT 5, BLOCK 4, PINKERTON'S HOMESITES  
 IN THE  
 COUNTY OF DOUGLAS  
 AND  
 STATE OF OREGON  
 SURVEYED 6-23-49                      SCALE 1"=30'

I hereby certify that I have surveyed the above described property, and that the improvements shown and described hereon are within the property lines.



*Arthur R. Evans*  
 Arthur R. Evans  
 Deputy County Surveyor.

**COUNTY SURVEYORS FILE DATA  
 DO NOT REMOVE FROM OFFICE**



T2 S. P. 6. S. 6. 7. 8. 9.

CS 43/45-1

FILE 45-DRAWER 43