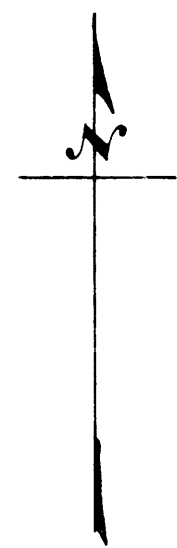
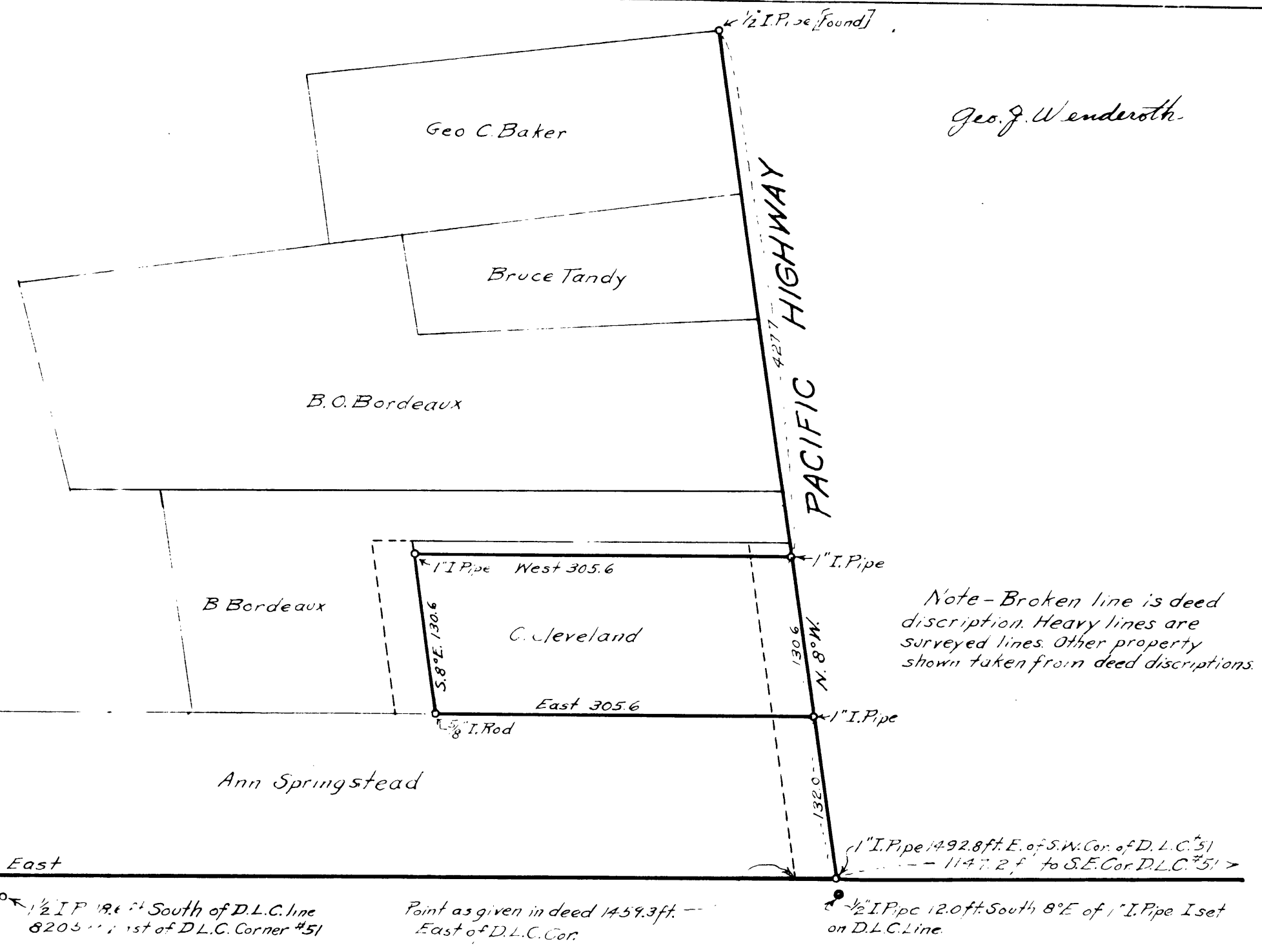


Geo. J. Wenderoth



COUNTY SURVEYOR'S OFFICE  
DOUGLAS COUNTY, OREGON.  
Survey for  
Clinton Cleveland  
Section 27, T. 30 S., R. 5 W., W.M.  
in City of Canyonville  
May, 1949 Scale 1"=100ft.  
Geo. J. Wenderoth, Deputy Co. Surveyor



Note - Broken line is deed description. Heavy lines are surveyed lines. Other property shown taken from deed descriptions.

S.W. Corner J. Clark D.L.C. #51  
1/4" Iron Pipe  
26" Fir N. 68° 30' E. 27.3  
12" Fir S. 10° 22' E. 34.5  
148.5  
1/2" I.P. 12ft. South of Corner. [Found]

N.W. Corner J. Roberts D.L.C. #59  
1" Iron Bolt  
14" Fir N. 4° 30' E. 41.1  
12" Madrone S. 80° 30' W. 18.0

1/2" I.P. 18.6 ft. South of D.L.C. line  
8205 ft. East of D.L.C. Corner #51

Point as given in deed 1459.3ft. East of D.L.C. Cor.

1" I. Pipe 1492.8ft. E. of S.W. Cor. of D.L.C. #51  
1147.2 ft. to S.E. Cor. D.L.C. #51  
1/2" I. Pipe 12.0ft. South 8° E of 1" I. Pipe I set on D.L.C. Line