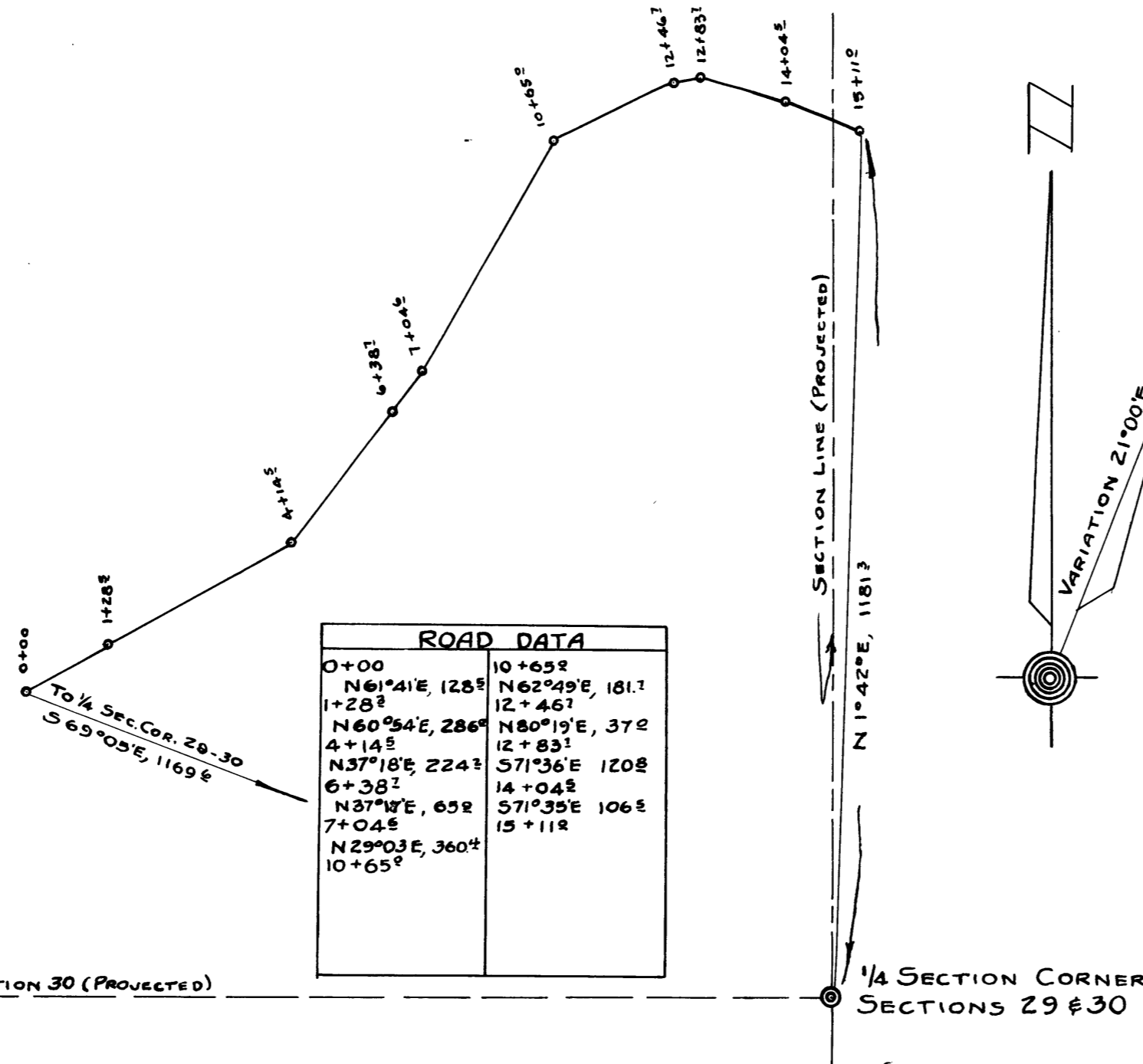


N.E. 1/4 SECTION 30, T25S., R2W.

NOTE: ALL BEARINGS CALCULATED FROM ANGLES TURNED IN DEFLECTION FROM MERIDIAN ESTABLISHED BY MAGNETIC NEEDLE READING AT 1/4 SECTION CORNER, SECTIONS 29-30.



COUNTY SURVEYOR'S OFFICE
DOUGLAS COUNTY OREGON
SURVEY FOR ROAD RIGHT-OF-WAY FOR
UMPQUA PLYWOOD CORPORATION, IN
NE 1/4, SEC. 30, T25S., R2W. W.M.
WIDTH OF RIGHT-OF-WAY, 100 FT.
SCALE 1"=200'

BEN B. IRVING COUNTY SURVEYOR
SURVEYED NOVEMBER, 1948 BY
A. R. EVANS, DEPUTY COUNTY SURVEYOR



**COUNTY SURVEYORS FILE DATA
DO NOT REMOVE FROM OFFICE**

A.R.E. 11-27-48

CS 43/9-2