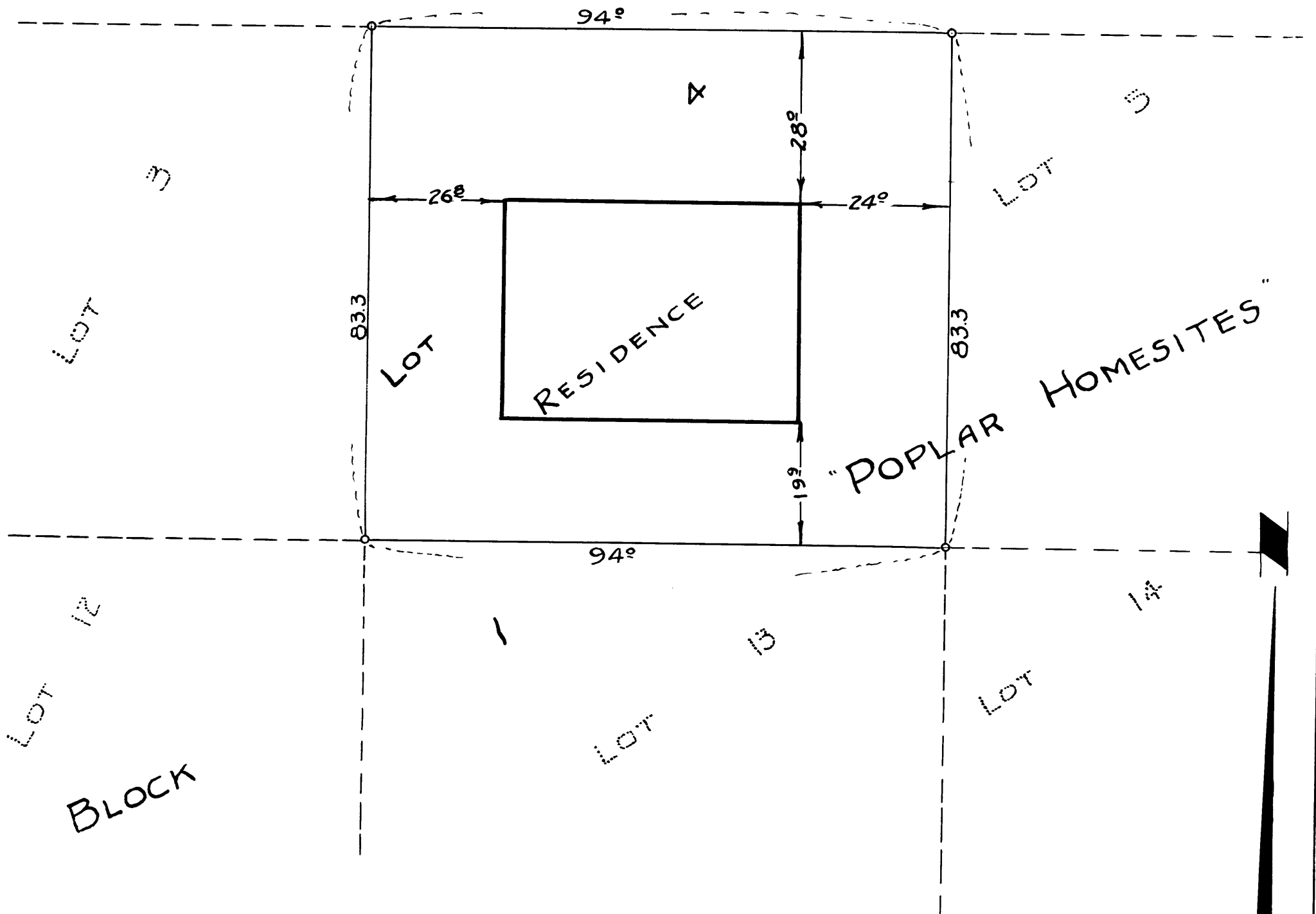


NEWTON CREEK

(COUNTY)

ROAD



COUNTY SURVEYOR'S OFFICE  
DOUGLAS COUNTY OREGON  
LOCATION OF RESIDENCE ON LOT 4, BLK. 1  
"POPLAR HOMESITES"  
SEC. 1, T27S., R6W. WIL. MER.

BEN B. IRVING COUNTY SURVEYOR  
SURVEYED NOVEMBER 2, 1948, BY  
A. R. EVANS DEP. CO. SURVEYOR  
SCALE 1" = 20'



COUNTY SURVEYORS FILE DATA  
DO NOT REMOVE FROM OFFICE

CS 43/1-6

FILE 7300A W48.93