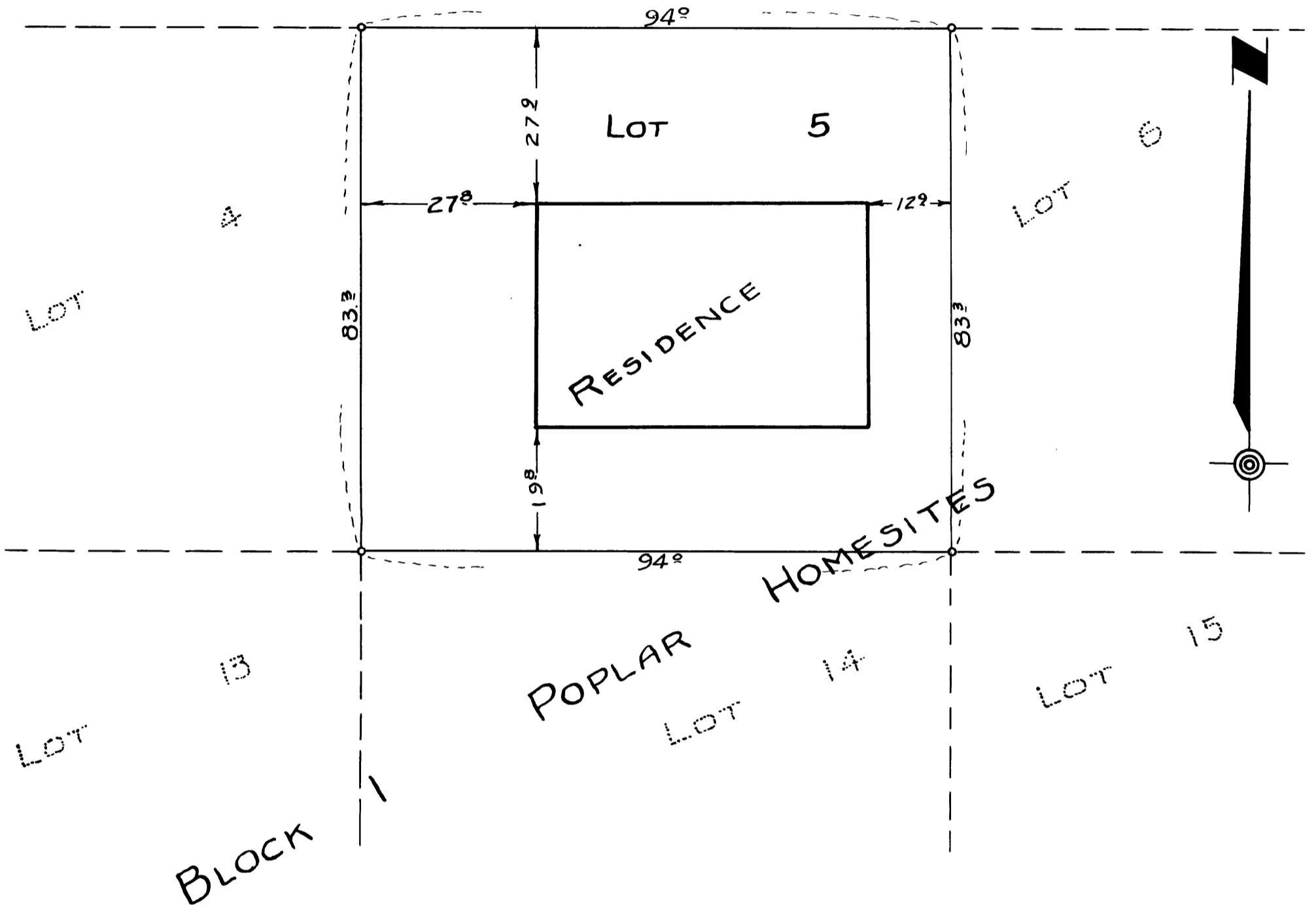


NEWTON CREEK

(COUNTY)

ROAD



COUNTY SURVEYOR'S OFFICE
 DOUGLAS COUNTY OREGON
 LOCATION OF RESIDENCE ON LOT 5,
 BLOCK 1, "POPLAR HOMESITES"
 SEC. 1, T27S., R6W. W.M.

BEN B. IRVING COUNTY SURVEYOR
 SURVEYED, NOVEMBER 2, 1948, BY
 A.R. EVANS DEP. COUNTY SURVEYOR
 SCALE 1" = 20'



COUNTY SURVEYORS FILE DATA
 DO NOT REMOVE FROM OFFICE