

COUNTY SURVEYORS FILE DATA
DO NOT REMOVE FROM OFFICE

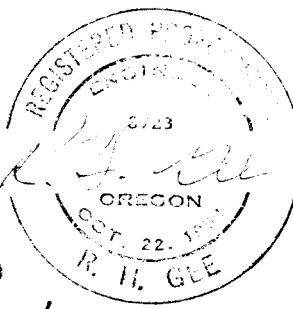
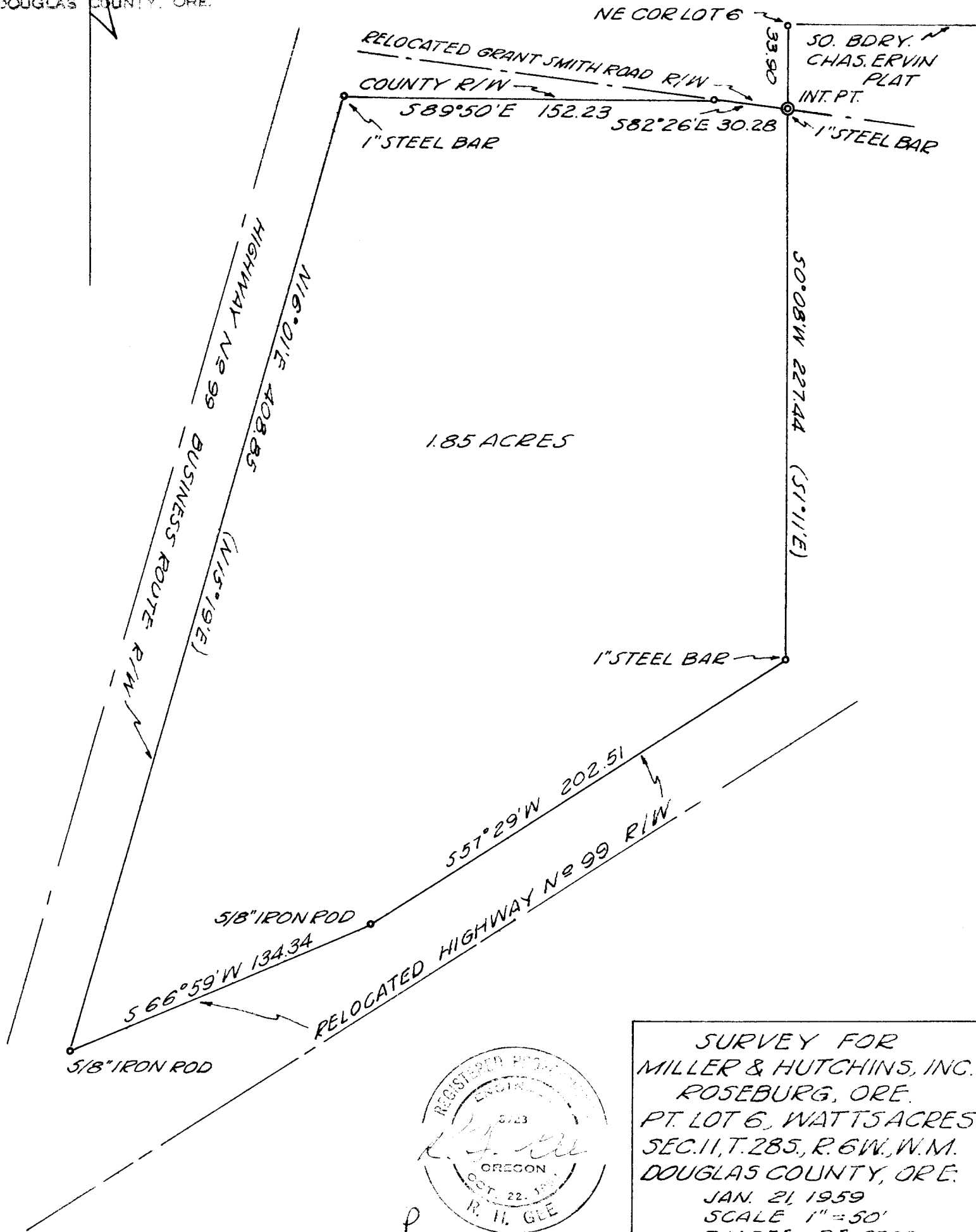
BASE BEARING - SOUTH
BOUNDARY CHAS. ERVIN PLAT
N89°50'W

NE COR LOT 6, WATTS ACRES BEARS
SOUTH 838.76 AND WEST 497.03 FROM
INITIAL POINT, WATTS ACRES.
SOUTH CORNERS TO LOTS 3 & 4
BLOCK 3, CHAS. ERVIN PLAT FOUND.

FILED
RECEIVED

JAN 28 1959

COUNTY SURVEYOR
DOUGLAS COUNTY, ORE.



SURVEY FOR
MILLER & HUTCHINS, INC.
ROSEBURG, ORE.
PT. LOT 6, WATTS ACRES
SEC. 11, T. 28S, R. 6W, W.M.
DOUGLAS COUNTY, ORE.
JAN. 21, 1959
SCALE 1" = 50'
R.H. GEE R.E. 3723

C. S. File No. 42/923