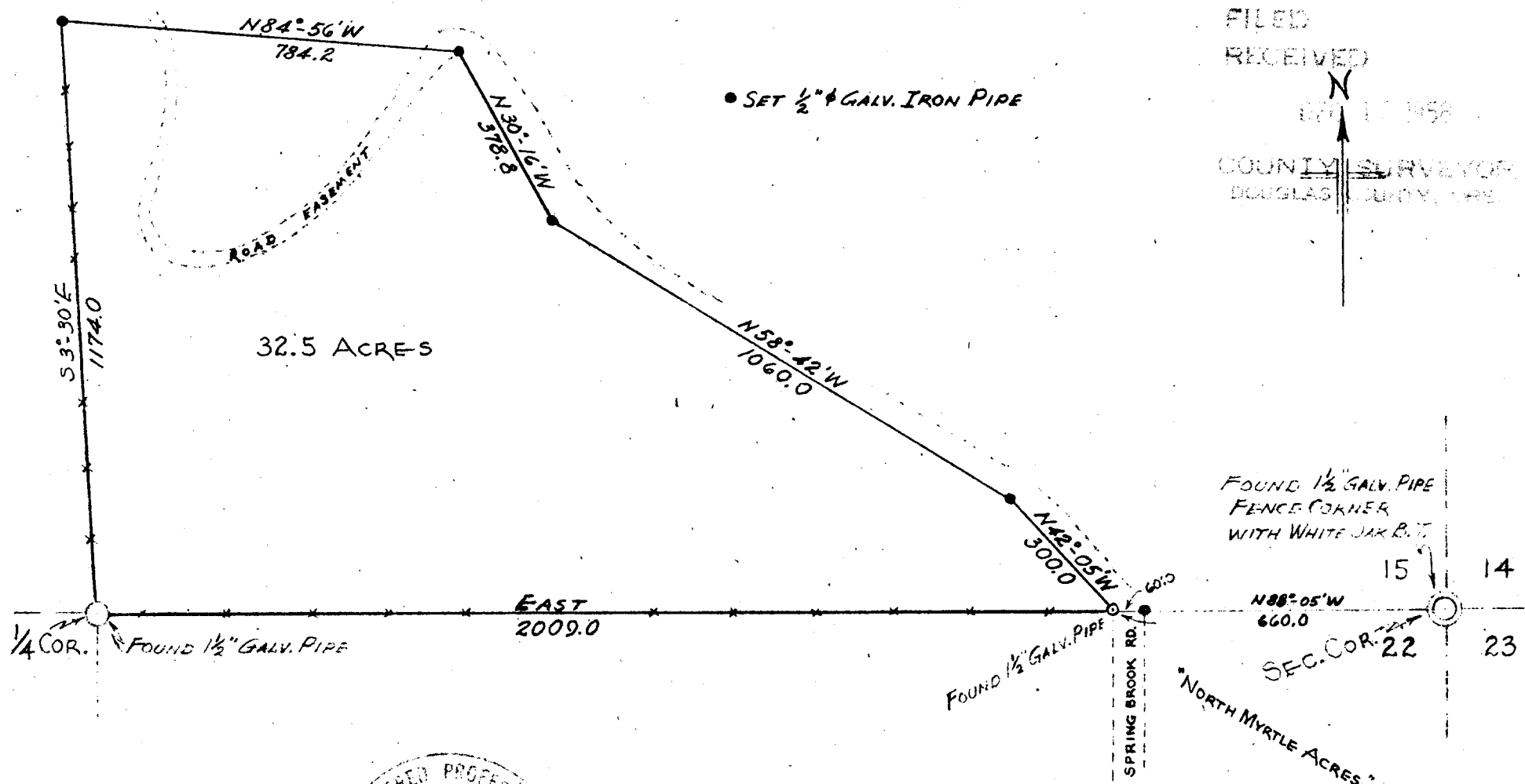


FILED  
RECEIVED  
SEP 11 1958  
COUNTY SURVEYOR  
DOUGLAS COUNTY, ORE.



FOUND 1/2" GALV. PIPE  
FENCE CORNER  
WITH WHITE JAK B.T.  
15 14  
N 88° 05' W  
660.0  
SEC. COR. 22 23  
"NORTH MYRTLE ACRES"

REGISTERED PROFESSIONAL  
ENGINEER  
3309  
Donald R. Martin  
OREGON  
NOV. 4, 1953  
DONALD R. MARTIN

PLAT PREPARED FOR  
JOE E. PRUITT  
MYRTLE CREEK, OREGON

SEC. 15 T29S R5W W.M. DOUGLAS COUNTY, OREGON

SCALE: 1 IN. = 300 FT.

MARTIN ENGINEERING SERVICE - MYRTLE CREEK, ORE.

SEPTEMBER 1958

COUNTY SURVEYORS' FILE DATA  
DO NOT REMOVE FROM OFFICE