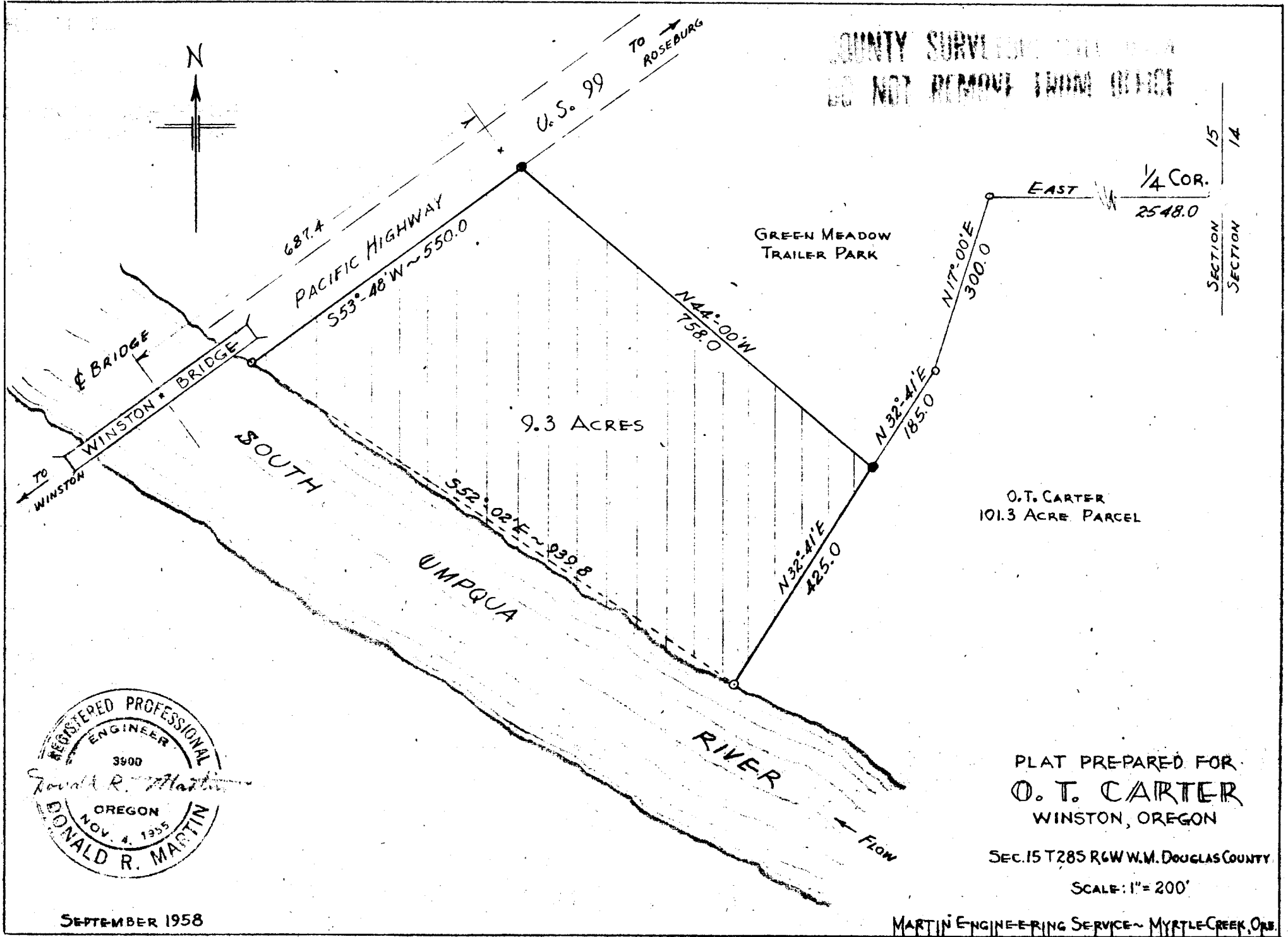


COUNTY SURVEYOR
DO NOT REMOVE THESE MARKS



SECTION 15
SECTION 14

O.T. CARTER
101.3 ACRE PARCEL

PLAT PREPARED FOR
O. T. CARTER
WINSTON, OREGON

SEC. 15 T285 R6W W.M. DOUGLAS COUNTY

SCALE: 1" = 200'



SEPTEMBER 1958

MARTIN ENGINEERING SERVICE - MYRTLE CREEK, ORE.