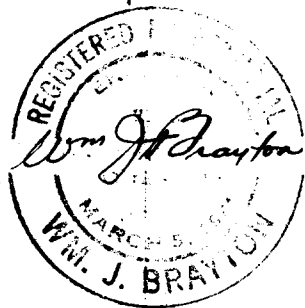
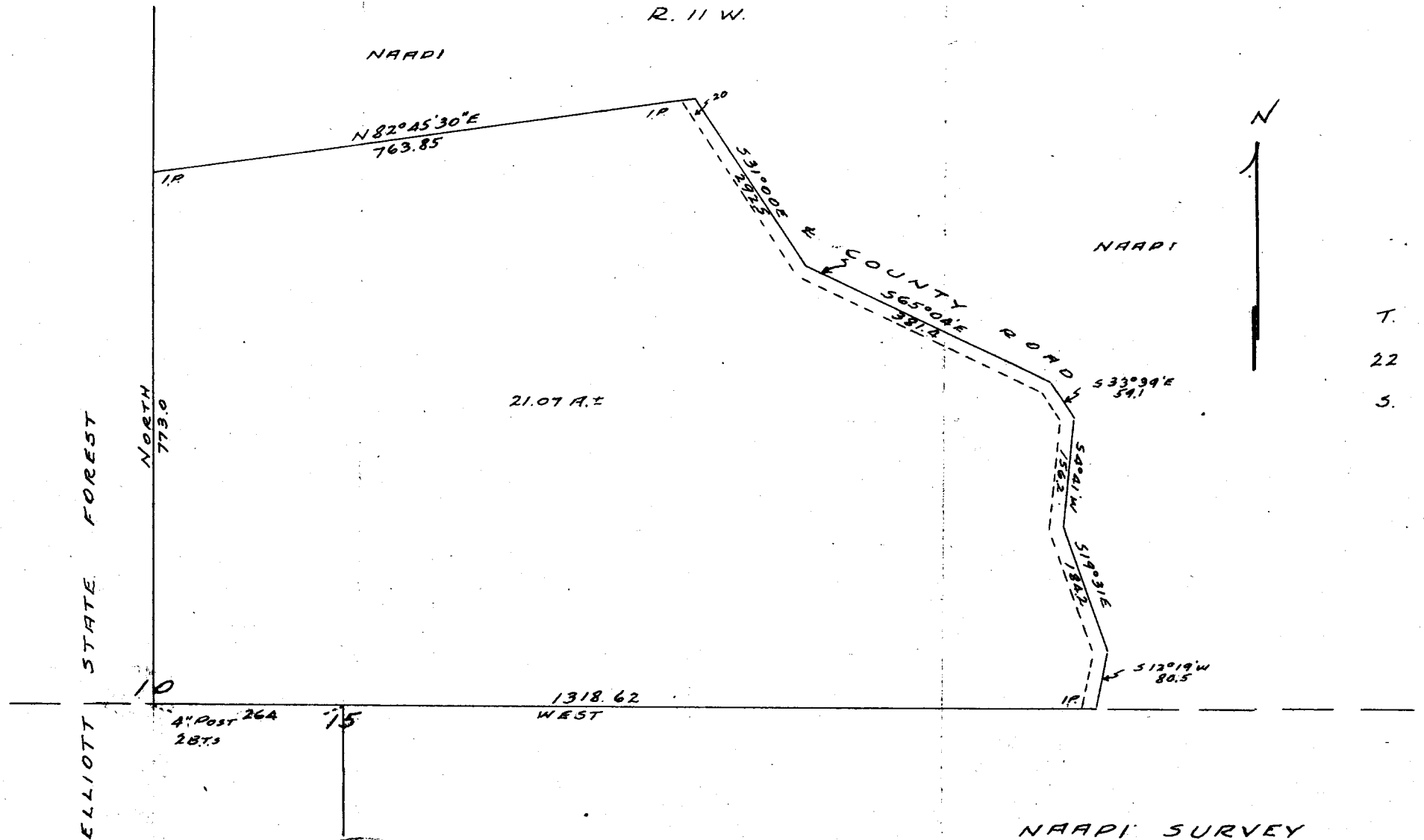


FILED  
RECEIVED

DEC 11 1958

COUNTY SURVEYOR  
DOUGLAS COUNTY, ORE.



NAAPI SURVEY  
SEC. 10, T. 22 S., R. 11 W. W. M.  
DOUGLAS COUNTY  
Scale 1" = 200' Oct. '58.

C. S. File No. 43/3972

T.  
22  
5.