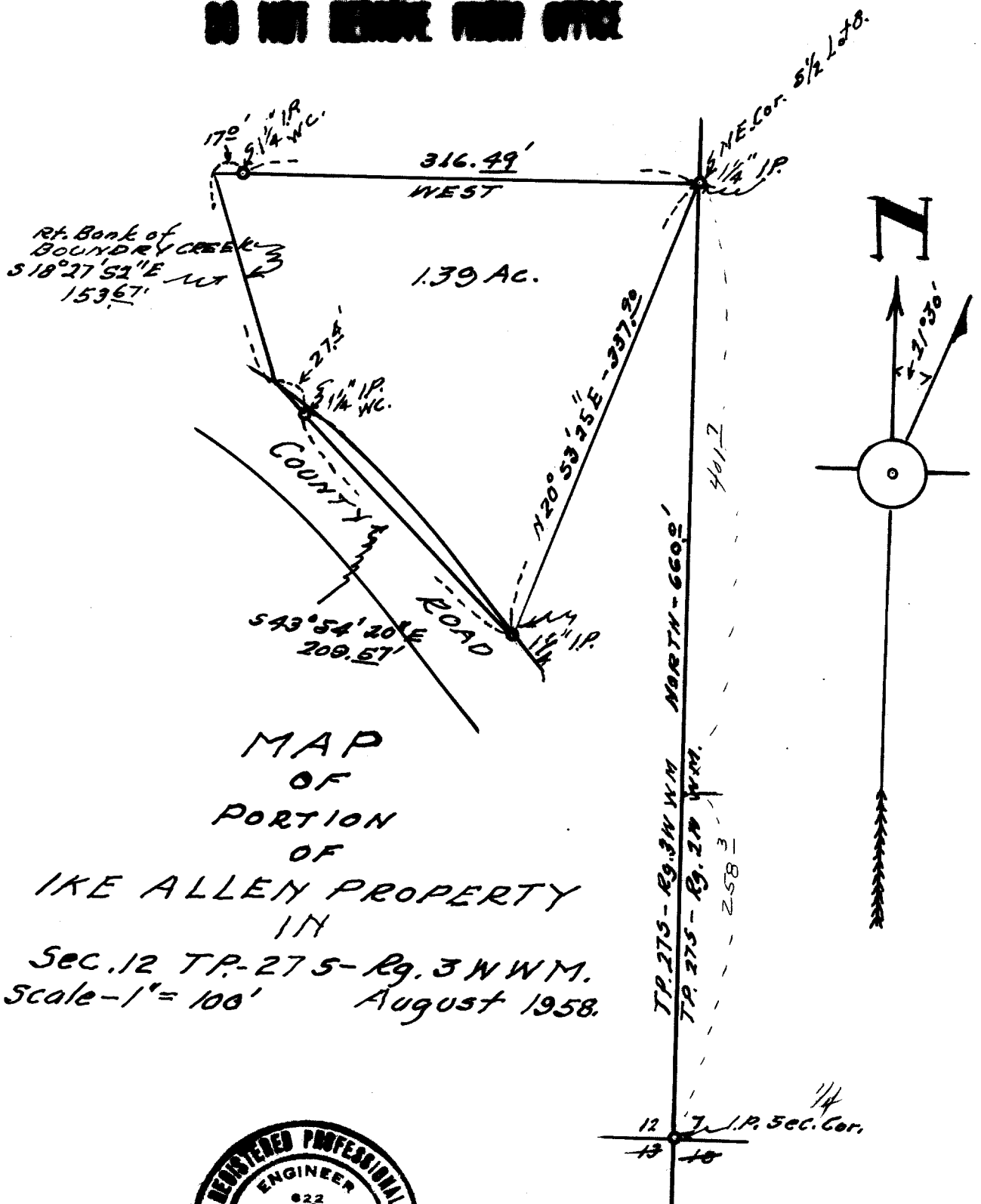


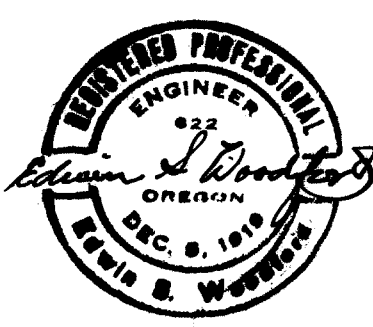
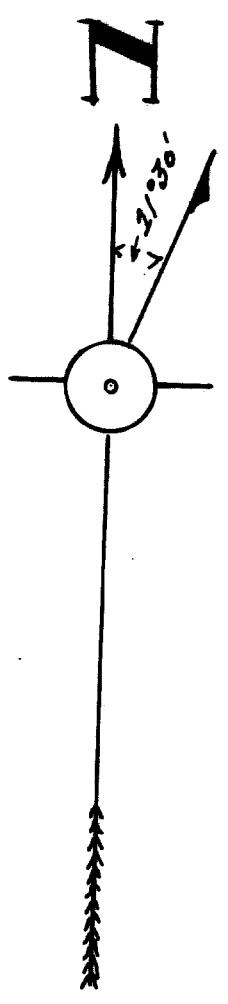
**COUNTY SURVEYORS FILE DATA
DO NOT REMOVE FROM OFFICE**



Rt. Bank of
BOUNDARY CREEK
S 18° 27' 52" E
153.67'

COUNTY ROAD
S 43° 54' 20" E
209.57'

MAP
OF
PORTION
OF
IKE ALLEN PROPERTY
IN
Sec. 12 T.P. 275 - Rg. 3 N W M.
Scale - 1" = 100' August 1958.



FILED
RECEIVED
SEP 2 1958
COUNTY SURVEYOR
DOUGLAS COUNTY, ORE.

SEE OTHER TRACING
THIS FILE
C. S. File No. 42/382

CS FILE FOLDER

CONTAINS

MORE

INFORMATION