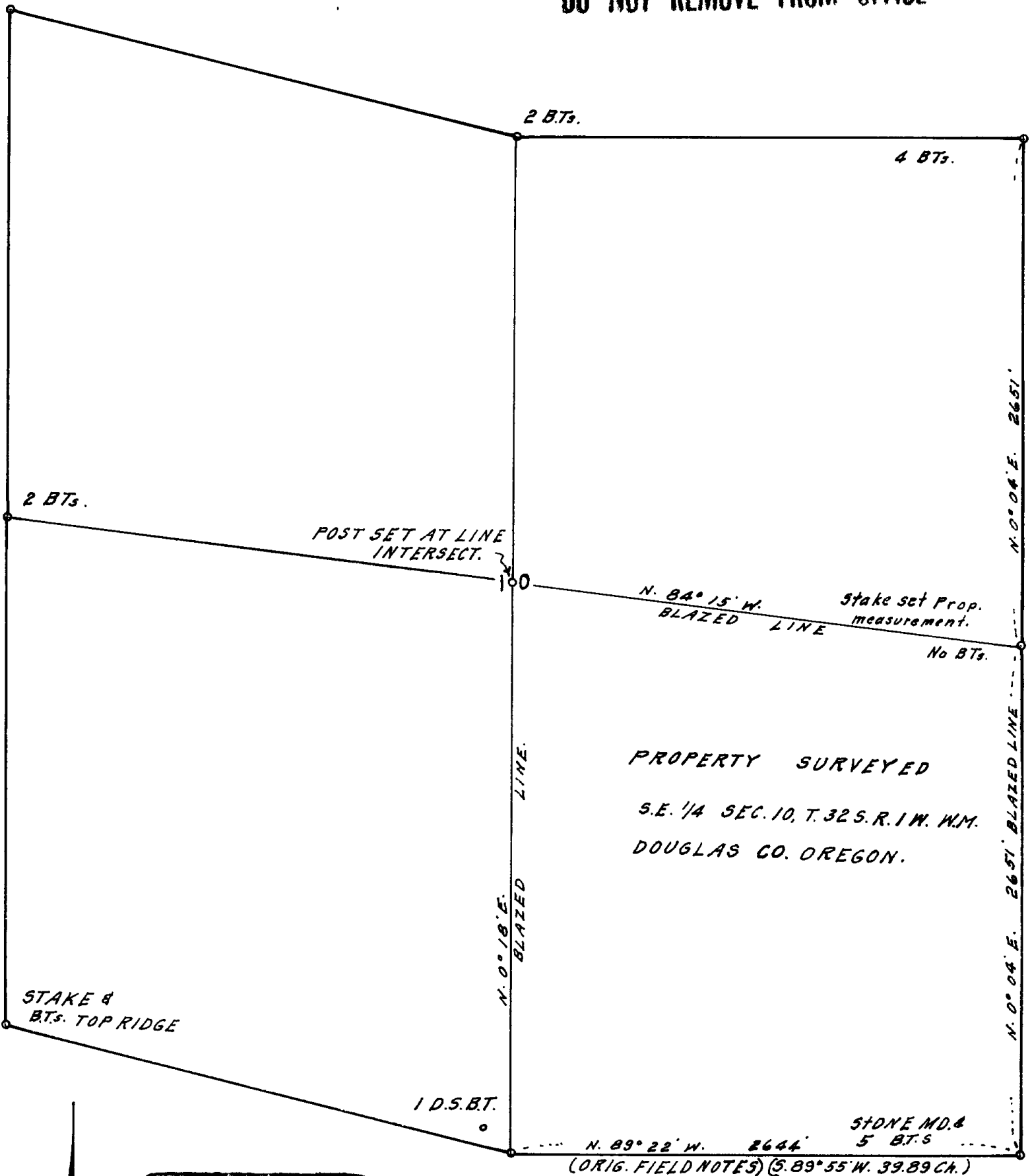


COUNTY SURVEYORS FILE DATA
DO NOT REMOVE FROM OFFICE



PROPERTY SURVEYED
S.E. 1/4 SEC. 10, T. 32 S. R. 1 W. W.M.
DOUGLAS CO. OREGON.

STAKE 4
B.T.s. TOP RIDGE

FILE
RECEIVED

REGISTERED
OREGON
LAND SURVEYOR

L. E. Ager

MARCH 10, 1944
L. E. AGER
21

AUG 5 1958

COUNTY SURVEYOR
DOUGLAS COUNTY, ORE.

MAP OF SURVEY OF S.E. 1/4 OF SECTION 10, T. 32 S. R. 1 W. W.M., DOUGLAS COUNTY, OREGON		
SURVEY BEGAN: MAY 14, 1947, & ENDED JUNE 16, 1947. DATUM: SOLAR BEARINGS.		
SURVEYED FOR	H.V. JOHNSTON, MEDFORD, ORE.	
SURVEYED BY	L. E. AGER, ASHLAND, ORE.	
DRAWN BY	L. E. A.	
SCALE	8" = 1 MILE.	
APPROVED		

C.S. File No. 42/384A

Survey narrative to comply with Section 87-330 Oregon State Law of 1947

For: H. V. Johnston, Medford, Oregon

Purpose: To mark the boundaries of the Southeast Quarter of Section 10, T. 32 S., R. 1 W., W.M., Douglas County, Oregon.

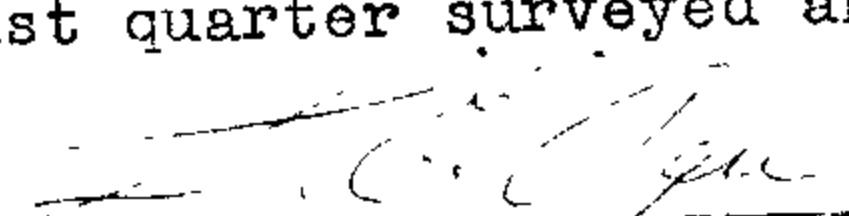
Procedure: Began survey at the southeast corner of the Section and ran West on random line following very old and later blazes which were bearing north of my random line. At a distance of 2615 feet west of the southeast corner I noted a white fir bark shell standing approx. 29 feet north of my random line which bore a large X cut in the bark and blackened from an old fire, this bark shell approx. 26" in diameter. The X being on the east face of the shell and other axe marks on the west face appearing to be old timber cruiser marks. As I was near the field note distance of the south quarter Corner I began a search this corner. Found a dead standing Fir tree approx. 16" in dia. with two axe cuts on the southeast face. The wood showing was partially rotted but portions of the 1/4 and S scribes were visible in the edges of the bark on the upper blaze. This being a tree 10" in dia. at the time the scribe was made, the cutting or axe facing on the tree was small so in scribing the tree the figure and letter appeared partially in the bark surrounding the face blaze. The letter Y was carved in the bark of this tree on the east side. As from the evidence of scribe and the positions of the upper and lower blazes this tree was standing northwest from the quarter corner. From this tree I set a post in the ground S.22° E. 20 links or 13.2 feet for the quarter corner according to the original field notes for the corner location from this bearing tree. From this quarter corner post I found the rotted stump of the second bearing tree S.12°W. 15 links or 9.9 feet. I continued my random line west to a point due south of the reestablished quarter corner a distance of 2644 feet west of the southeast corner of the section and 29.1 feet south of the quarter corner. From this quarter corner I blazed the true line on a bearing of S.89°22'E. to the southeast corner of the Section. From the southeast corner of the section I chained north and at the half mile I found no evidence of the east quarter corner, set a post at 2640 feet north and continued north, intersecting the north line of the Section a distance of 5302 feet from the southeast Section corner a distance of 6,15 feet west of the northeast corner of the Section. I moved the stake set for the east 1/4 corner to a position on true line and equidistant between the Northeast and Southeast corners. From this stake I ran West, intersecting the west line of the Section at a point 532 feet South of the West Quarter corner. Returned to the east 1/4 corner and blazed a line N.84°15'W. on true line to a point near the center of Section. Blazed line from east 1/4 cor. to SE corner. From south 1/4 corner north on random line intersect north line of section 27.8 feet west of north 1/2 corner, a stake set for corner with 2 bearing trees. From south 1/4 corner ran north 0°18 minutes east on true line and set stake at the intersection of this line with the true east-west quarter line of the section. All boundaries of the southeast quarter surveyed and blazed.

REGISTERED
OREGON
LAND SURVEYOR

MARCH 18 1944

L B AGER

21


Registered Surveyor No. 21

42/384b