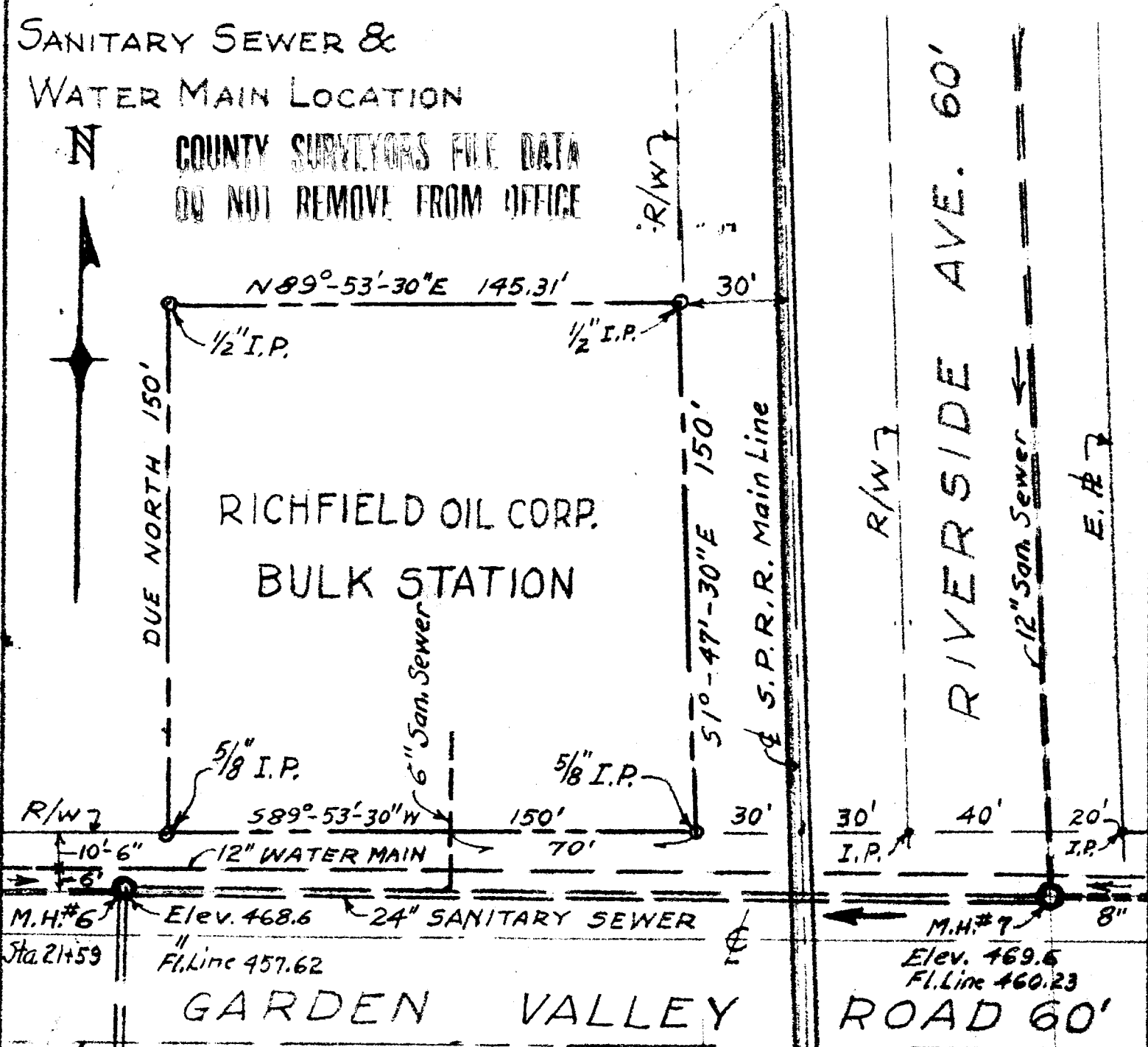


RICHFIELD OIL CORP. BULK STATION PARCEL SURVEY

NORTH ROSEBURG - OREGON

SANITARY SEWER &
WATER MAIN LOCATION

N COUNTY SURVEYORS FILE DATA
DO NOT REMOVE FROM OFFICE



FILED
RECEIVED

AUG 4 1958

COUNTY SURVEYOR
DOUGLAS COUNTY, ORE.

AUG. 2, 1958

SURVEYED BY

JAMES R. DAUGHERTY
CIVIL-SANITARY ENGINEER
ROSEBURG, ORE.

