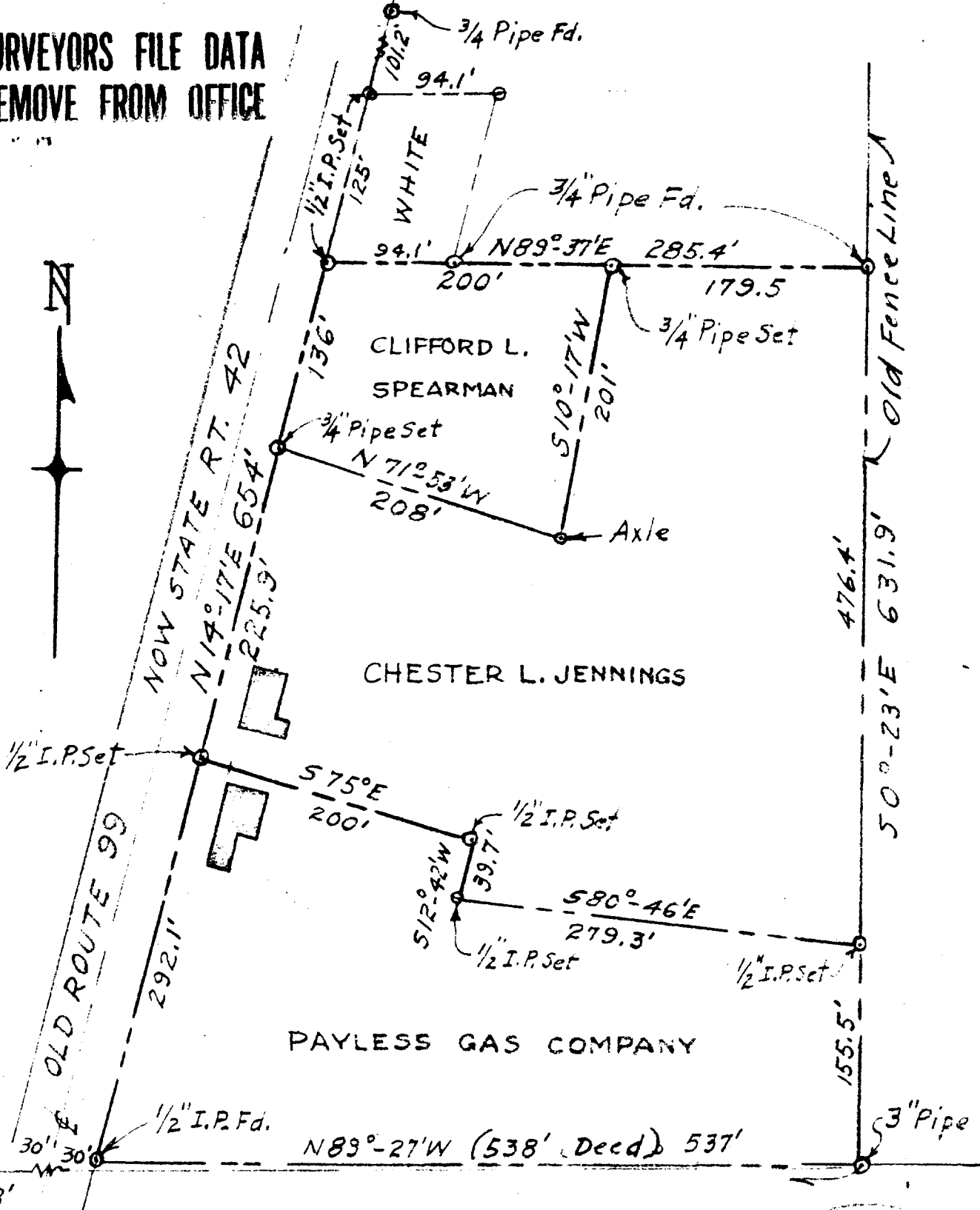


CHESTER L. JENNINGS PARCELS · SECT. 21 · T28S · R6W · W.M.
WINSTON · DOUGLAS COUNTY · OREGON

COUNTY SURVEYORS FILE DATA
DO NOT REMOVE FROM OFFICE

17 16
20 21

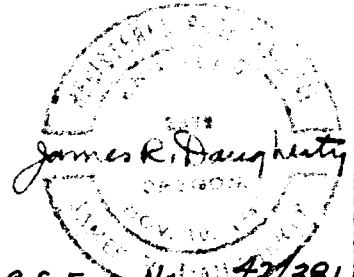
South 411' 3814.0'



FILED

SURVEYED BY

RECEIVED JAMES R. DAUGHERTY



SCALE 1"=100'

AUG 4 1958 CIVIL-SANITARY ENGINEER

JULY 30, 1958 COUNTY SURVEYOR WINSTON · ORE.

P. C. S. FILE No. 42/381