

FILED
RECEIVED

COUNTY SURVEYORS FILE DATA
DO NOT REMOVE FROM OFFICE

JUL 18 1958

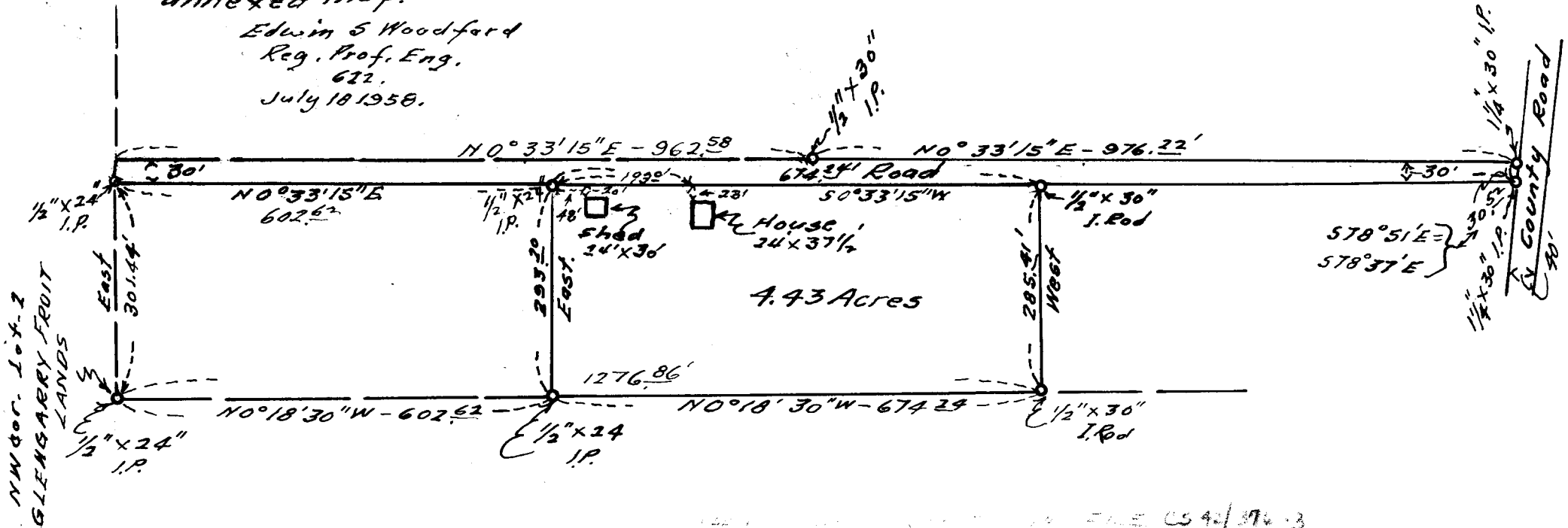
COUNTY SURVEYOR
LINCOLN COUNTY, ORE.

MAP
OF
W.J. WILSON PROPERTY
IN
Lots 2 & 3 - Block - 1 GLENGARRY FRUIT LANDS
Sec. 13 & 28 - TP. 28 S - R. 6 W WM.
Scale - 1" = 200' - July 1958.



This is to certify that the
Location of Land Lines
and improvements are
located as shown on the
annexed map.

Edwin S Woodford
Reg. Prof. Eng.
622.
July 18 1958.



FILE CS 42/376-3

C.S. FILE No 42/376-2