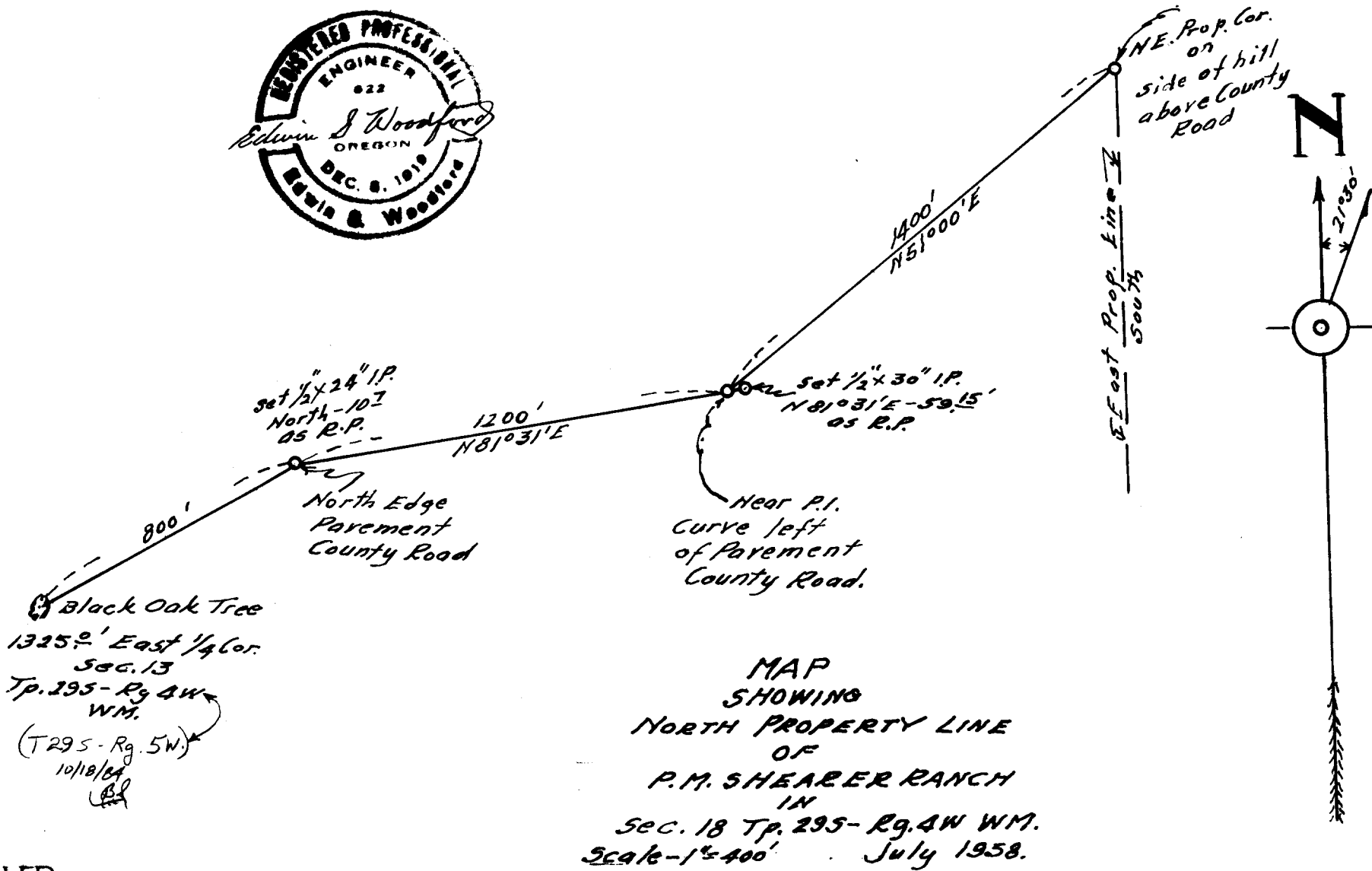
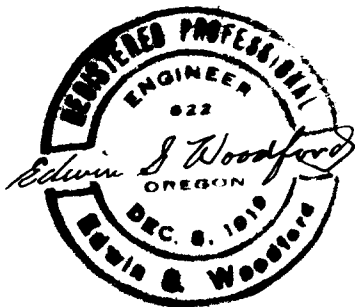


COUNTY SURVEYORS FILE DATA
DO NOT REMOVE FROM OFFICE



MAP
SHOWING
NORTH PROPERTY LINE
OF
P.M. SHEARER RANCH
IN
SEC. 18 Tp. 29S-Rg. 4W WM.
Scale-1"=400' July 1958.

FILED
RECEIVED

JUL 11 1958

COUNTY SURVEYOR
DOUGLAS COUNTY, ORE.

C.S. FILE No. 42/375