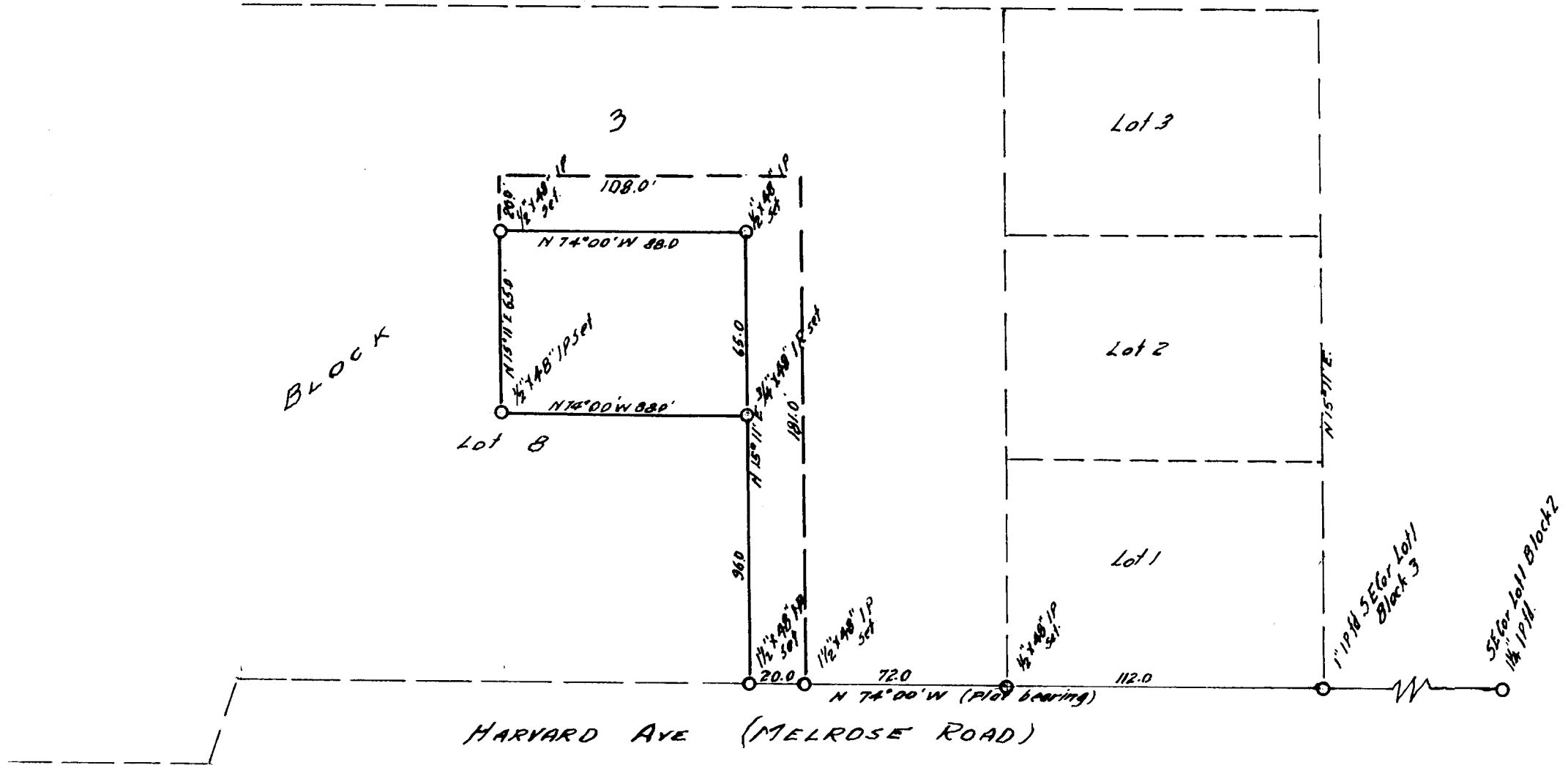


**COUNTY SURVEYORS FILE DATA  
DO NOT REMOVE FROM OFFICE**



**PART OF LOT 8 BLOCK 3  
CLOAKE'S FERRY  
SURVEYED JUNE 28 1958 FOR DEED DESCRIPTION  
by BEN. B. IRVING. Registered Engineer.**

FILED  
RECEIVED

JUL 3 1958

COUNTY SURVEYOR  
DOUGLAS COUNTY, ORE.

*Ben Irving*

42/374