

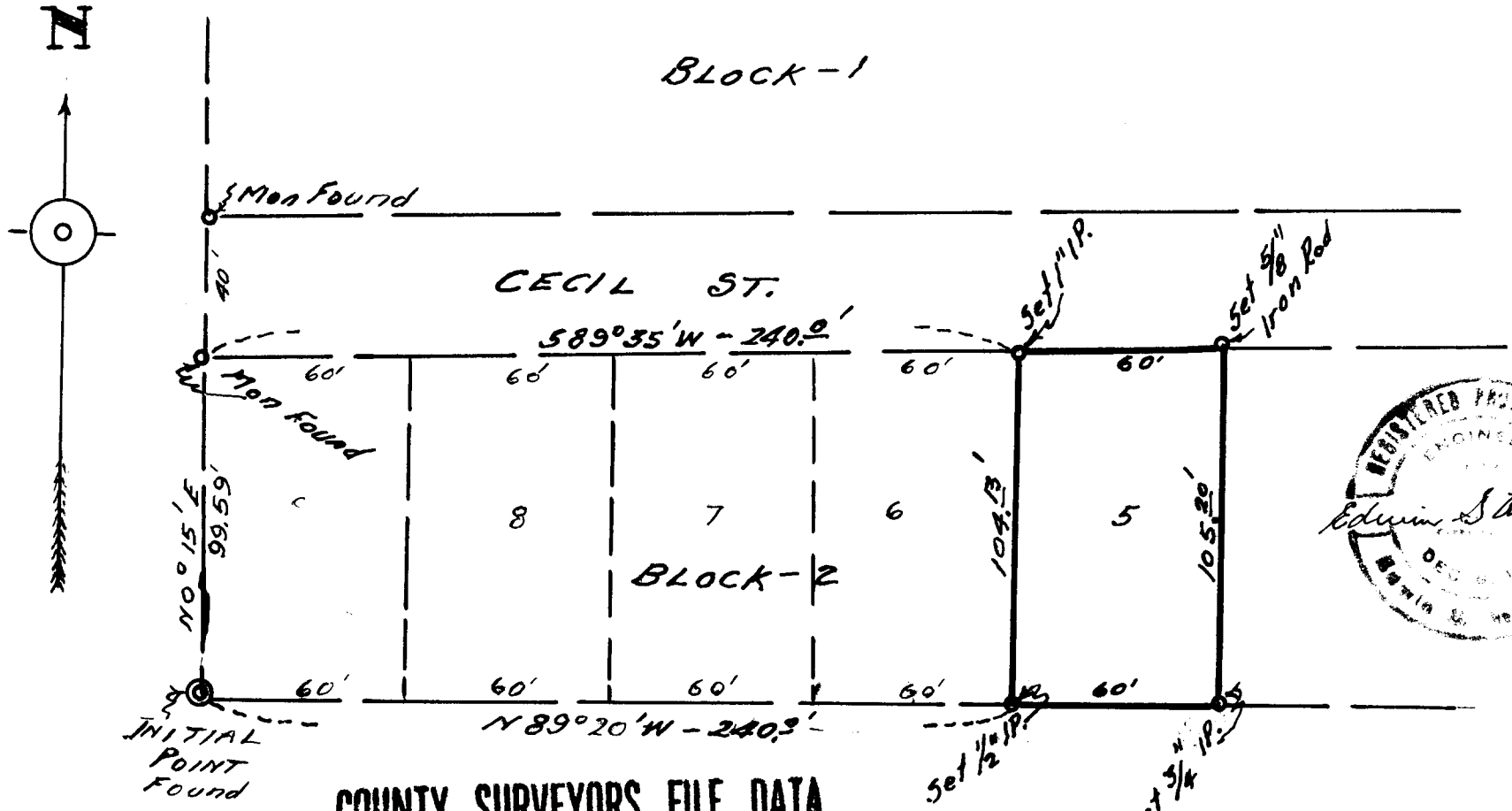
FILED  
RECEIVED

JUL 8 1958

COUNTY SURVEYOR  
DEGLAS COUNTY, ORE.

P  
C.S. FILE 42/371

MAP  
SHOWING  
Monuments Set for Lot 5 - Block-2  
COLLINS ADDITION  
TO  
ROSEBURG OREGON.  
Sec. 12. Tp 27S-Rg 6W WM.  
Scale - 1" = 50' July - 1958.



COUNTY SURVEYORS FILE DATA  
DO NOT REMOVE FROM OFFICE