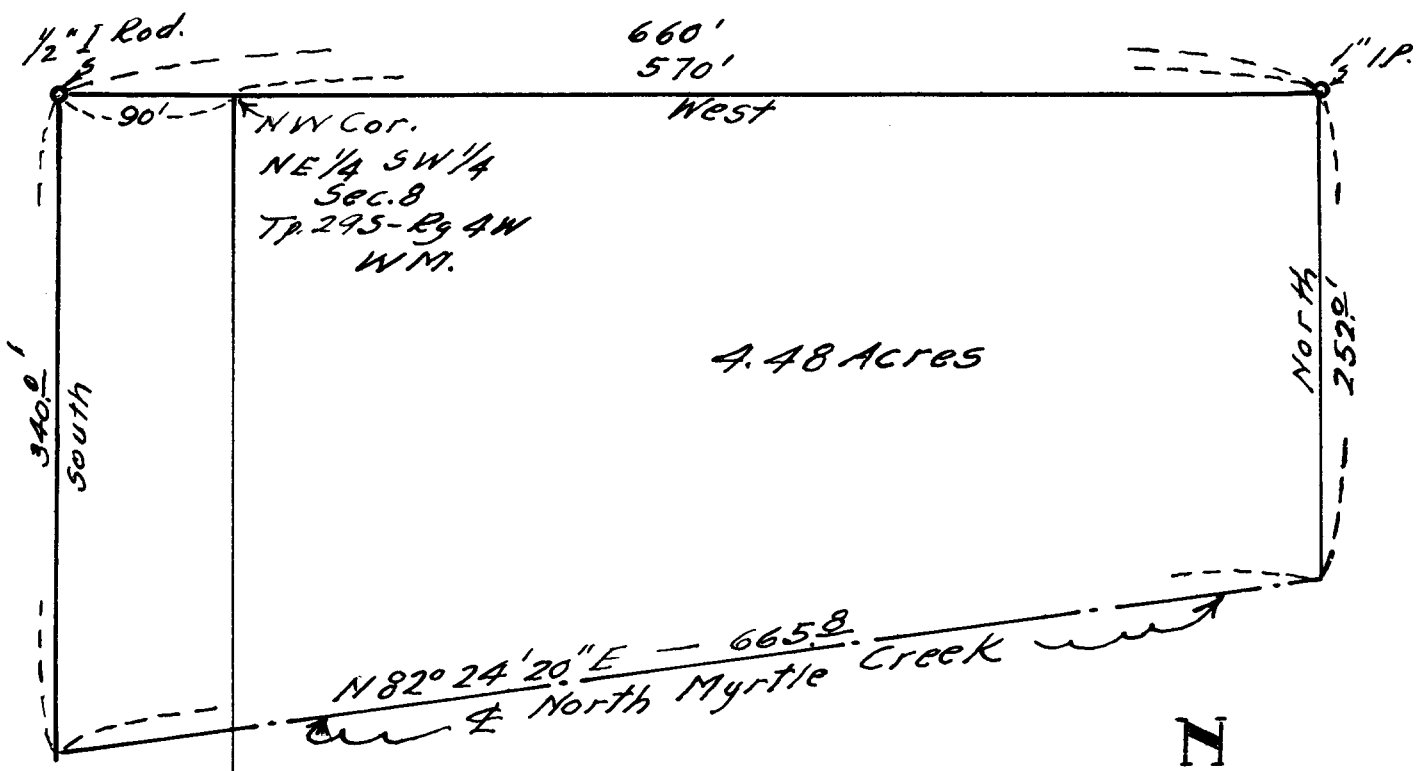
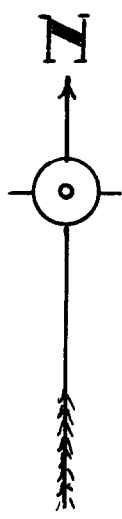


MAP
 SHOWING PORTION
 OF
 CHARLES CASON PROPERTY
 IN
 Section 8 Tp. 29S-Rg. 4W W.M.
 scale - 1" = 100' July 1958.



REGISTERED PROFESSIONAL
 ENGINEER
Edwin S. Woodford
 No. 8,10
 State of Missouri



FILED
 RECEIVED

JUL 8 1958

COUNTY SURVEYOR
 DOUGLAS COUNTY, MO.

**COUNTY SURVEYORS FILE DATA
 DO NOT REMOVE FROM OFFICE**