

FILED  
RECEIVED

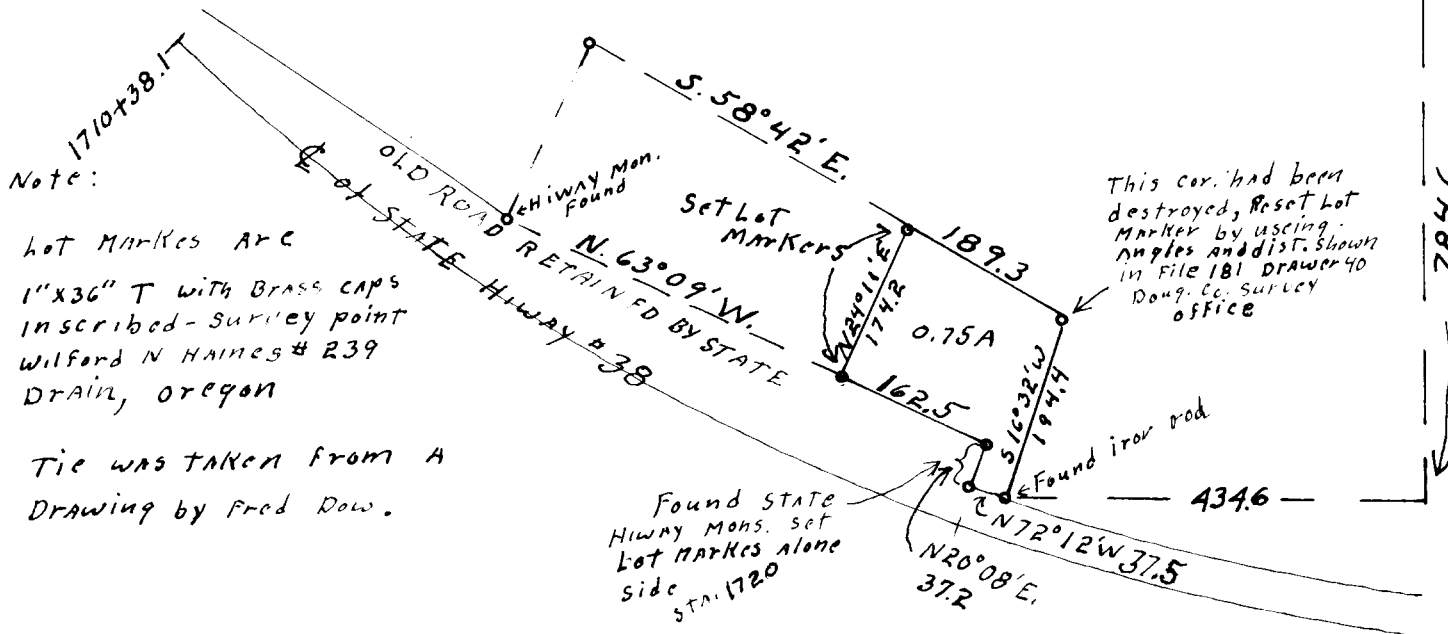
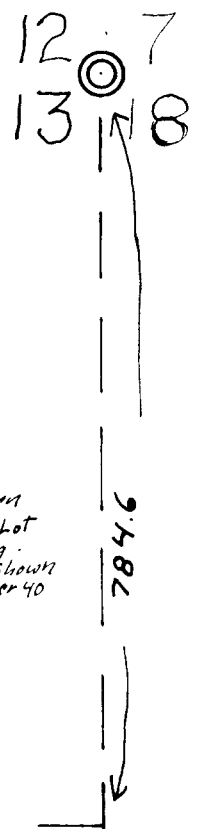
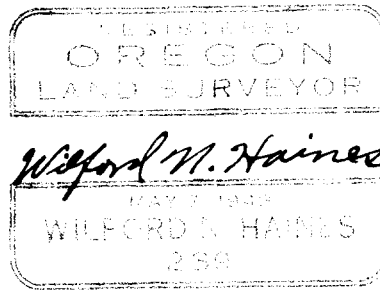
MAY 10 1958

COUNTY SURVEYORS FILE DATA  
DO NOT REMOVE FROM OFFICE

COUNTY SURVEYOR  
WILFORD N. HAINES, OREGON

SECTION 13  
MAY 1958

T. 22S. R. 6W  
SCALE 1"=200'



Note:

lot Markers are

1" x 3/8" T with Brass caps  
inscribed - survey point  
Wilford N HAINES # 239  
DRAIN, OREGON

Tie was taken from A  
Drawing by Fred Dow.

For Douglas

CS FILE NO. 42/364