

COUNTY SURVEYOR'S OFFICE  
DO NOT REMOVE FROM OFFICE

# SURVEY IN LOT 1, WINCHESTER HOMESITES SECTION 25, T 26 S, R 6 W, OF W.M.

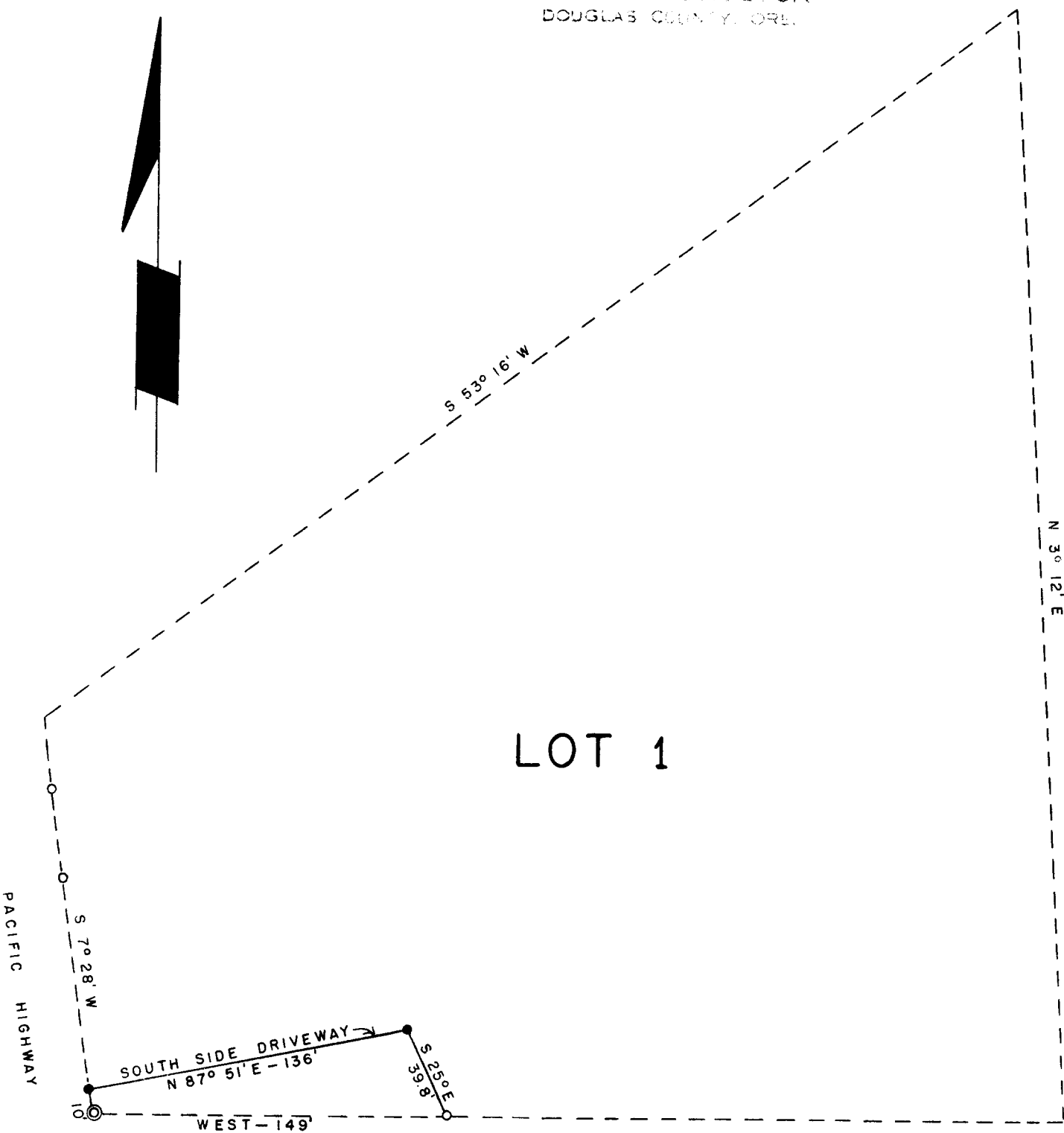
SURVEYED FOR: C. E. BREWER  
SURVEYED BY: G. R. LECKLIDER- ENGR. APRIL, 1958  
SCALE: 1" = 60'

FILED  
RECEIVED

APR 17 1958

COUNTY SURVEYOR  
DOUGLAS COUNTY, ORE.

○⊙ DENOTES CORNERS FOUND  
● DENOTES CORNERS SET



REGISTERED PROFESSIONAL  
ENGINEER  
4079  
G. Robert Lecklider  
OREGON  
APR 15 1958  
G. ROBERT LECKLIDER

42/361