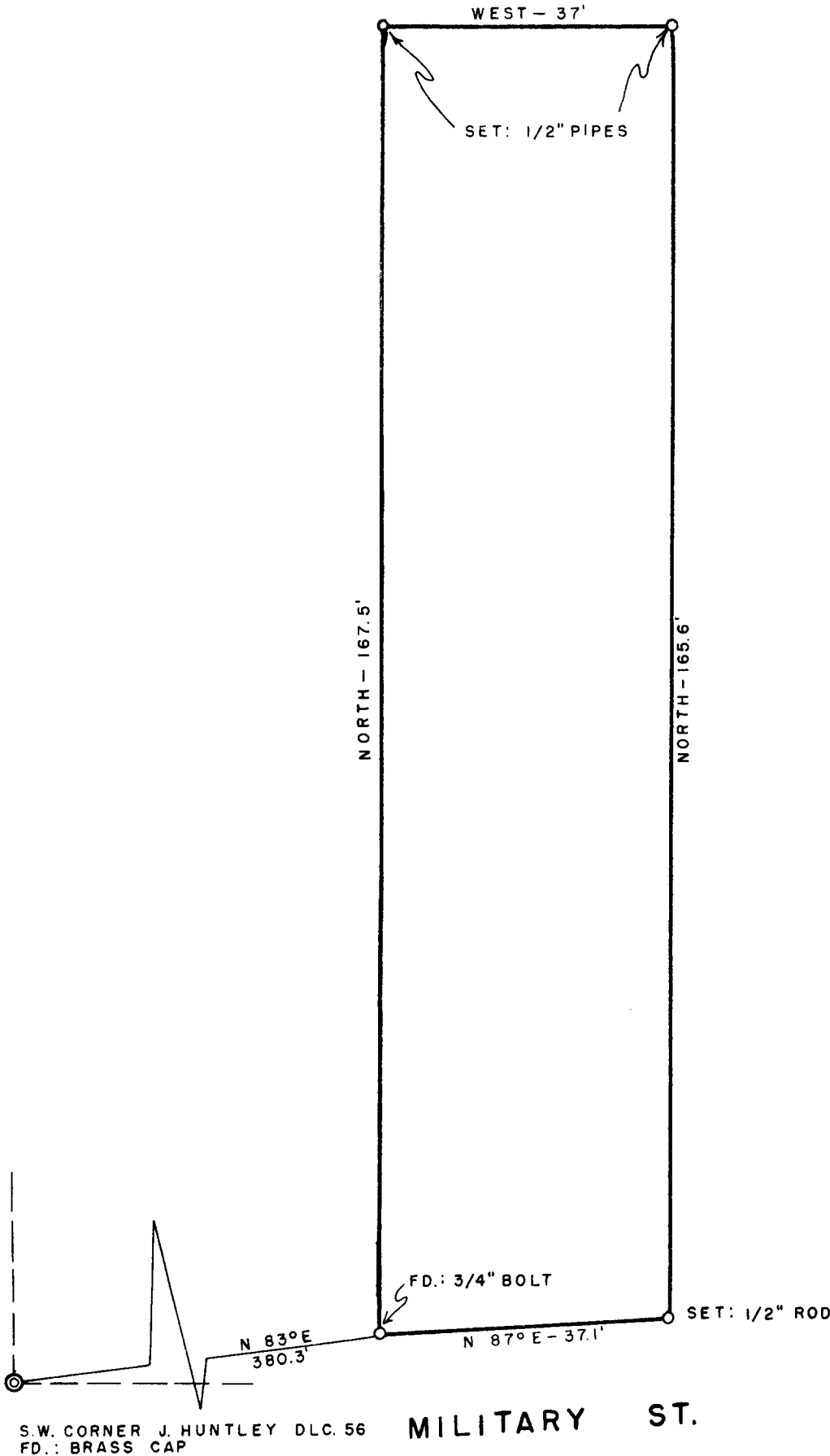


COUNTY SURVEYORS FILE DATA
DO NOT REMOVE FROM OFFICE

METES & BOUNDS SURVEY IN
SECTION 24, T 27 S, R 6 W, W.M.

SURVEYED FOR: MISS E. J. DOWNING APRIL: 1958

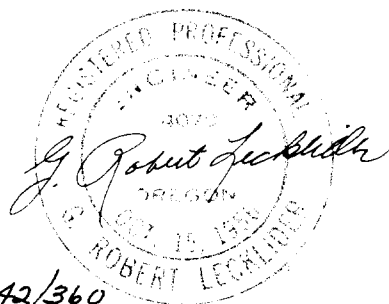
SURVEYED BY: G. R. LECKLIDER-ENGR. SCALE: 1"=20'



FILED
RECEIVED

APR 11 1958

COUNTY SURVEYOR
DOUGLAS COUNTY, ORE.



42/360