

Oct 13, 1959

S.W. Corner Sec. 34

T30S R4W W.M.

At corner point set  
 $\frac{1}{2} \times \frac{1}{2} \times 30$ " angle iron.

from which

12" Alder bears East 71.0'  
dist. mkd. 534 B.T.

8" Fir bears N 36 E 26.0'  
dist. mkd. 534 B.T.

10" La bears NZW 33.6'  
dist. mkd. 533 T30S R4W B.T.



Work done for Stoman Lbr Co.

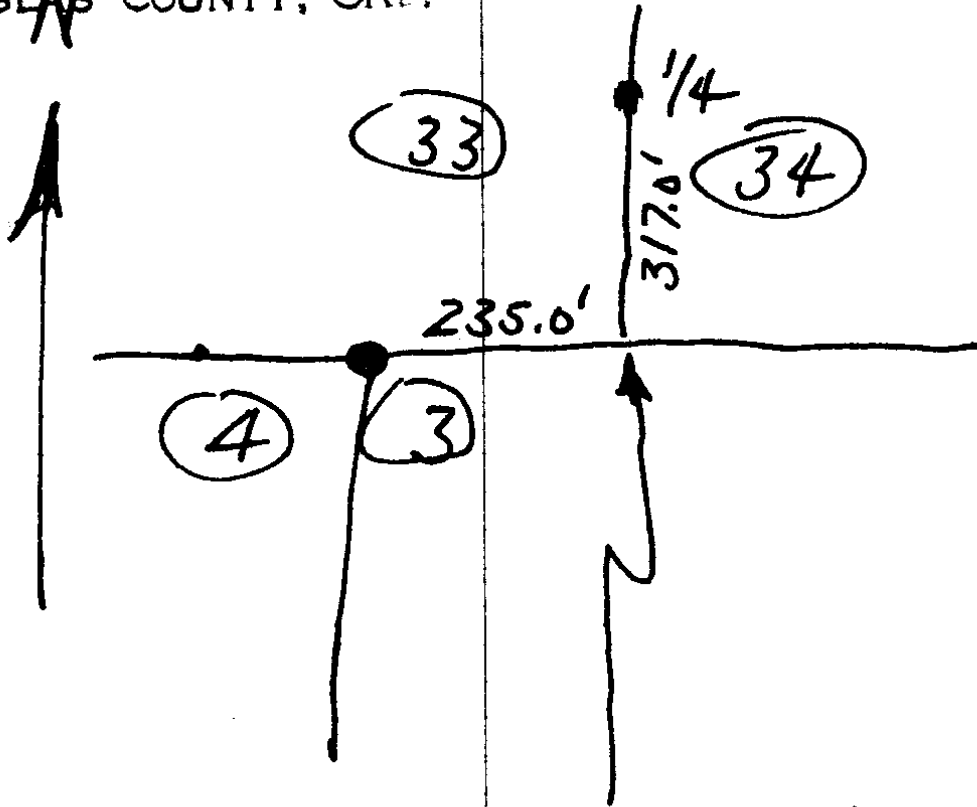
OVER C. S. File No. 42/356-17

FILED

RECEIVED

NOV 17 1950

COUNTY SURVEYOR  
DOUGLAS COUNTY, ORE.



I set this corner by  
Intersection of a line  
East from Sec. Con 3 & 4  
and South from 1/4 cor. 33/34  
The distance I show are  
approx.