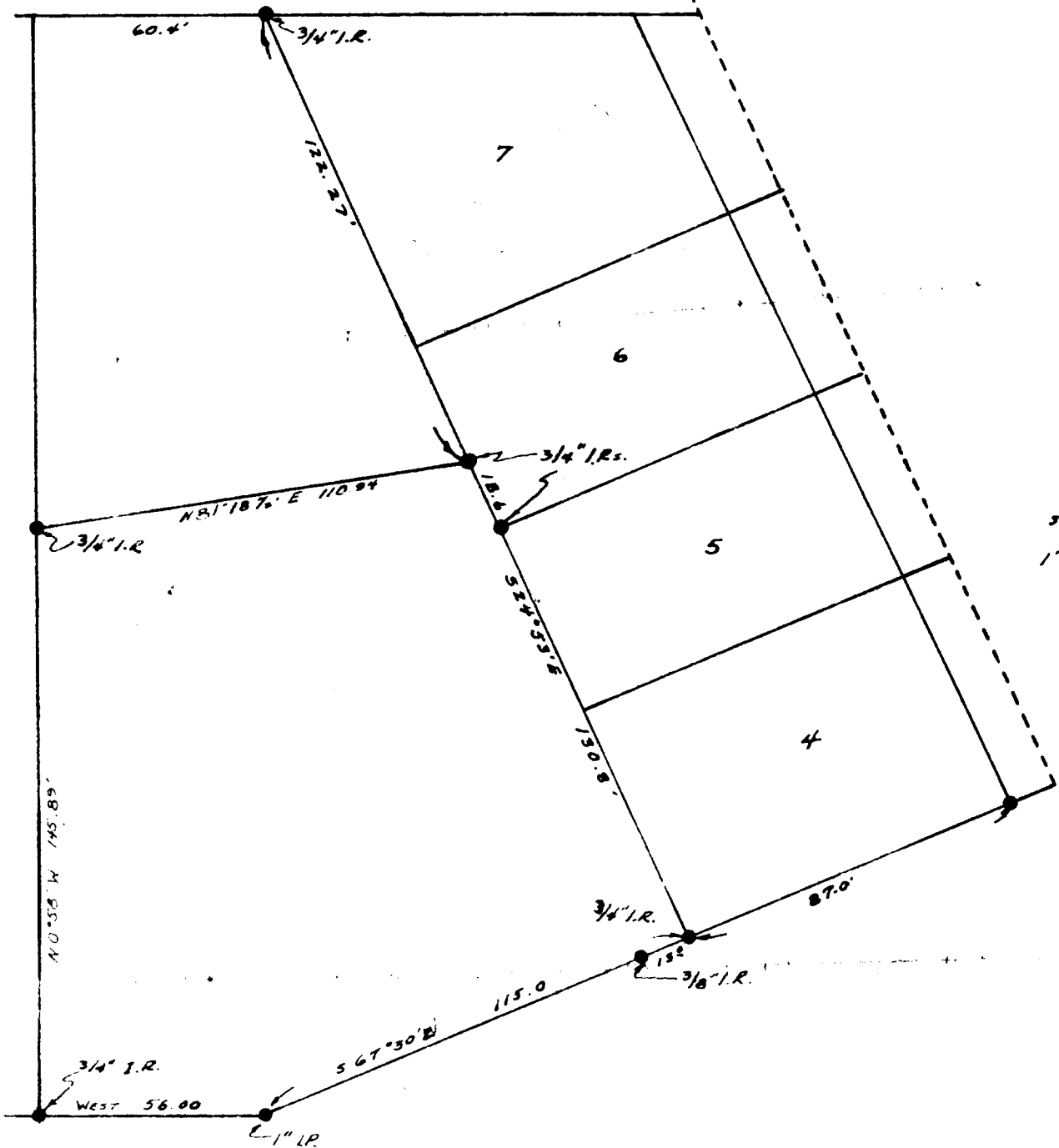


77. 860 000 13

COUNTY SURVEYORS FILE DATA
DO NOT REMOVE FROM OFFICE



SURVEY OF A PORTION OF LOT 3 BLK. 2

FILED
RECEIVED

NEUNER & ANDRIES ADD.

APR 21 1958

SURVEYED DEC. 1956 FOR E. E. DAVIDSON
by R. G. IRVING.

COUNTY SURVEYOR
DOUGLAS COUNTY, ORE

P 42/352