

WEST 116 FT. OF LOT 3 · BL. 2 · NEUNER & ANDRIES ADD.

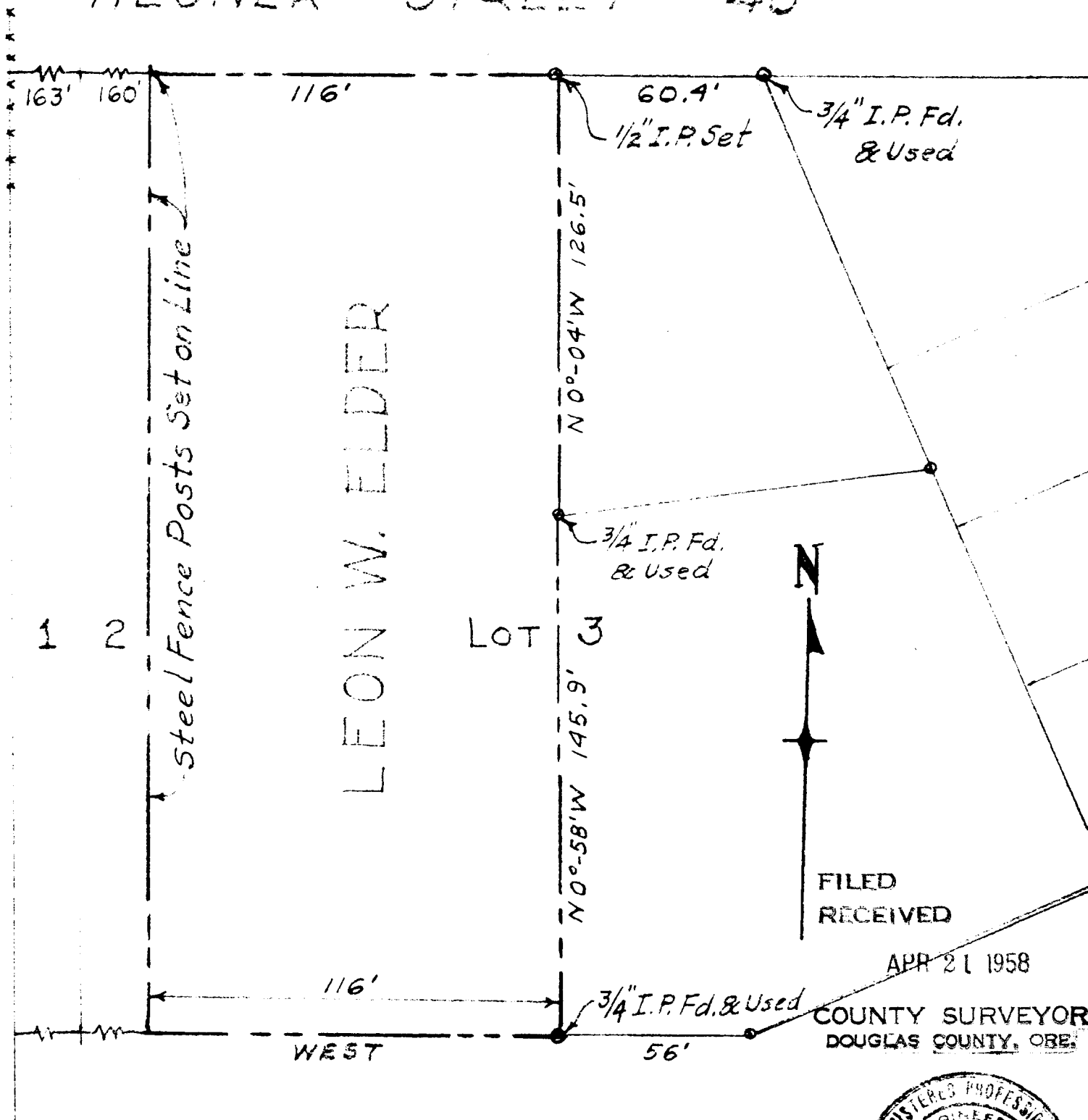
DOUGLAS COUNTY · OREGON

COUNTY SURVEYORS FILE DATA

Leon W. Elder

DO NOT REMOVE FROM OFFICE

NEUNER STREET 40'



SCALE 1"=40'

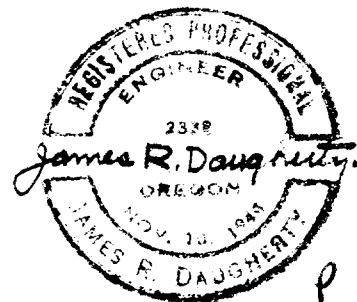
Surveyed By

JAMES R. DAUGHERTY

CIVIL-SANITARY ENGINEER

ROSEBURG · ORE.

COUNTY SURVEYOR  
DOUGLAS COUNTY, ORE.



APR. 1958.

42/367