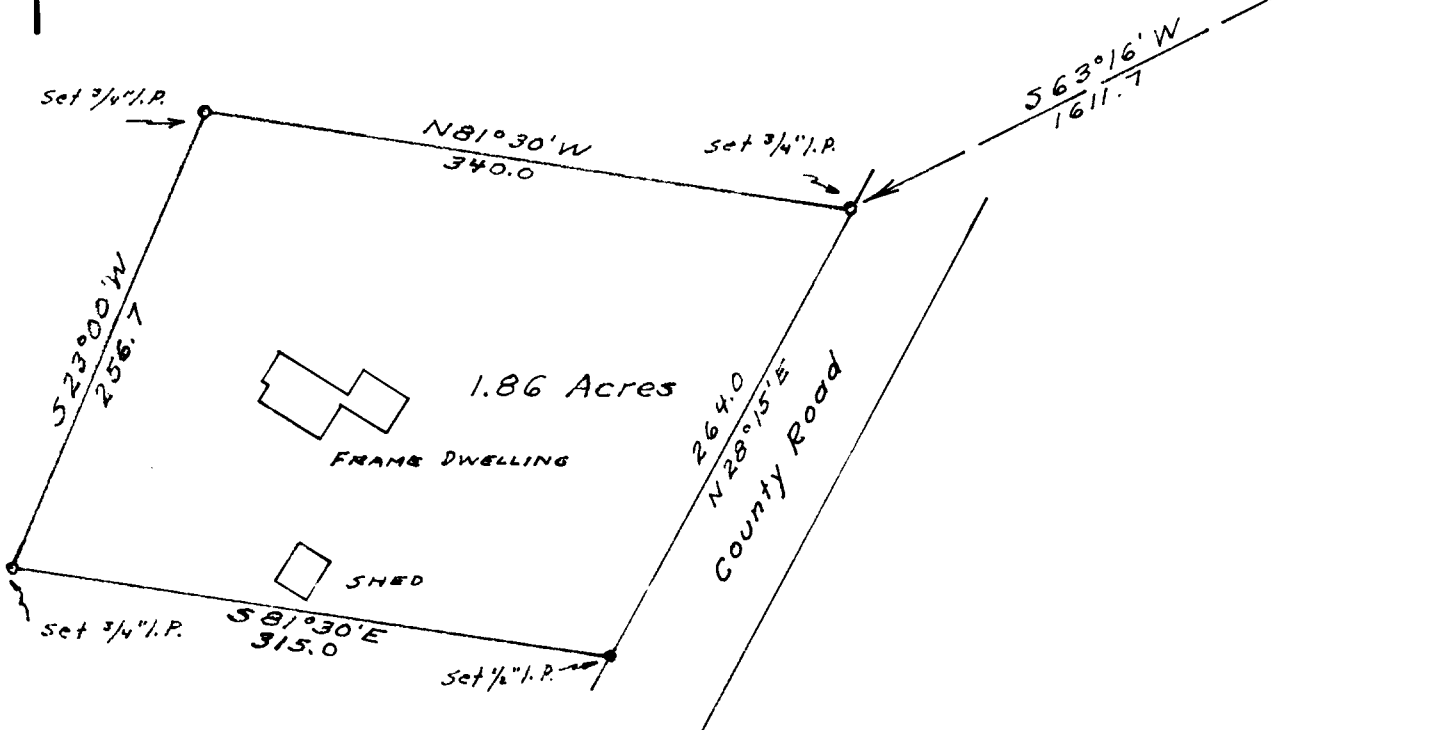


**SURVEY OF PORTION
 OF
 W. PIEREN PROPERTY
 LOCATED IN
 NW 1/4 OF SE 1/4, SECTION 6,
 T. 32 S., R. 4 W., W.M.
 Scale: 1" = 100' Feb. 24, 1958**



1/4 CORNER 5 & 6
 Fd. 1" I.P. on north edge of rd.
 Fd. 34" FIR B.T. (stump) S15°E 46.8 ft.
 Fd. 36" FIR B.T. S47°15'W 114.0 ft.
 (G. Wenderoth Apr. 1950)



Note:

This survey executed with Leupold Mtn. transit, and 200 ft. steel tape. Distances were measured on the slope and converted to horizontal measurement by use of a clinometer in good adjustment to measure vertical angles. All bearings are referred to the true meridian based upon solar observation taken at 4:25 P.M., Feb. 21, 1958. All monuments marked with Al. tag stamped "R53024"



26, 1958

COUNTY SURVEYOR

**COUNTY SURVEYORS FILE DATA
 DO NOT REMOVE FROM OFFICE**