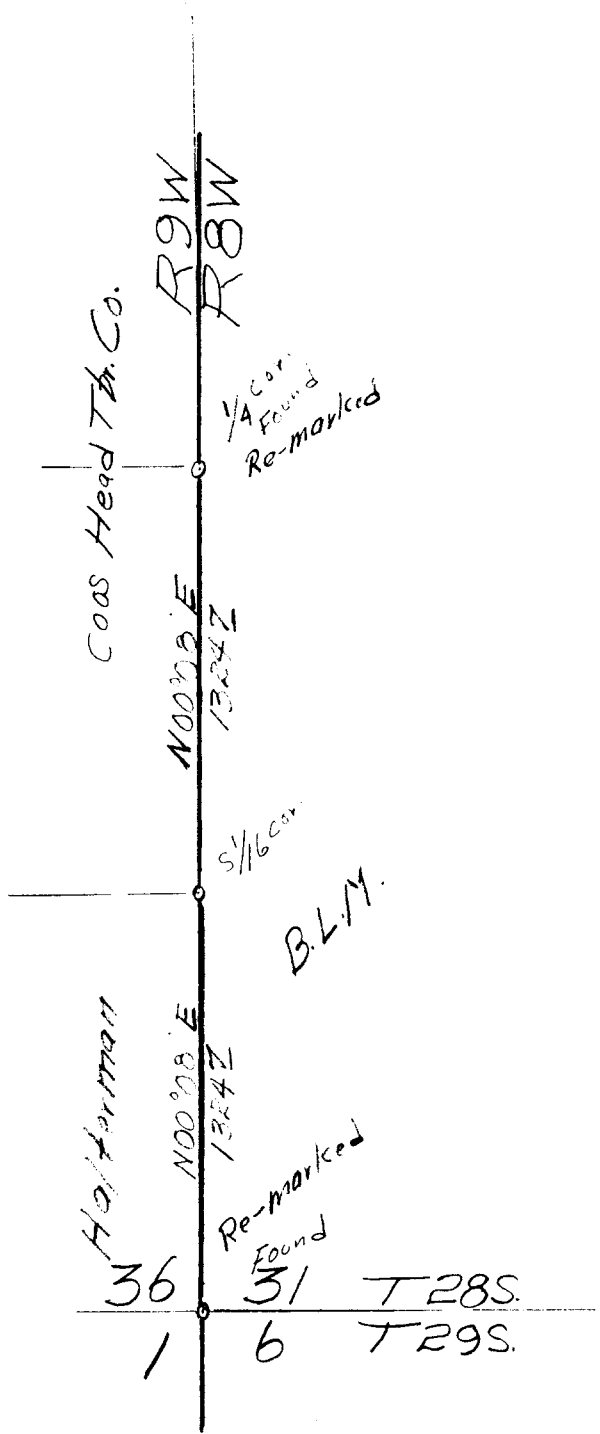


COUNTY SURVEYORS FILE DATA
DO NOT REMOVE FROM OFFICE



Clifford A. Stephens



Survey For
Coos Head Timber Co. Jan. 1958
Sec's 31 & 36, T28S, R8 & 9 W. WM
Scale 1 inch = 600 Ft.
Stephens & Andrews, For: Eng Dept.

FILED
RECEIVED

JAN 22 1958

COUNTY SURVEYOR
DOUGLAS COUNTY, ORE.

Stephens

SURVEY NO. _____ SEC. 36 T 29S R 9W., Douglas County, Oregon
MADE FOR: COOS HEAD TIMBER COMPANY DATE: January 8, 1958.
MADE BY: Clifford A. Stephens REGISTERED LAND SURVEYOR.
ORE. NO. 238. DATE OF REGISTRATION: May 7, 1948.

The Survey commenced at the 1/4 corner between Section 36, T28S, R9W and Section 31, T28S, R8W. Found 24" Incense Cedar bearing S42°30'E 44.4 feet as marked by Ben Irving, Registered Professional Engineer. From the above BT set 1" Steel Rod and post for 1/4 corner from which:

Orig. BTs
A Fir Stump 40" dia. brs. N80°E 7.2 ft.
A Fir 40" dia. (down) brs. N20°W 11.9 ft.

From the above 1/4 corner:

South on trail line between Sections 31 and 36
26/49.4 - Intersect. Twp. line 2.2 feet East of the Twp. corner common to Twps. 28 and 29, South R8 and 9 West. Found scribing on the one remaining White Fir Stump bearing N86½°W 23.8 feet.

Re-established the corner from the above BT by setting a 3/4" Iron pipe post for the corner from which:

One Orig. BT
Remains of 24" White Fir Stump brs. N86½°W 23.8 ft.
(Scribing visible)

New BTs
An Incense Cedar 20" dia. brs. N03°E 86.9 ft. (Scribed)
A Fir 4" dia. brs. N76½°E 21.1 ft. (Scribed)
A Fir 5" dia. brs. S07½°W 22.8 ft. (Scribed)

THENCE:

N00°18'E on true line on the East boundary of Section 36, T28S., R9W
1.324.7 - Set the S 1/16 corner on true line. Set Iron Pipe and fir post for the corner from which:

An Incense Cedar 10" dia. brs. S45°E 3.2 ft.
A Fir 10" dia. brs. S89½°W 25.3 ft.

2.649.4 feet to the 1/4 corner previously described.

FILED
RECEIVED

JAN 22 1958

COUNTY SURVEYOR
DOUGLAS COUNTY, ORE.

