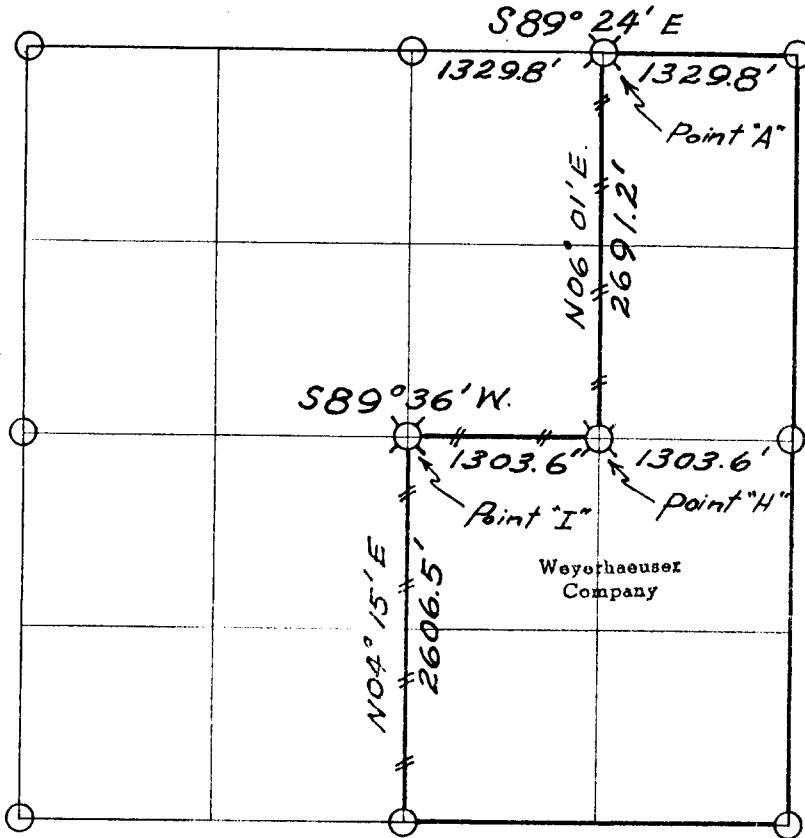


Weyerhaeuser Company

Section 5 Township 24 S. Range 3 W.



— # — # — Line marked by notch cut in blaze

○ Known corner

⊗ Referenced corner

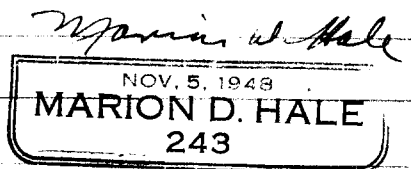
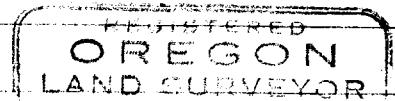
Transit and abney slope chain survey.

Bearings based on assumed 20° declination.

This survey was made for Weyerhaeuser Company by Marion D. Hale, Oregon
Licensed Land Surveyor, Reg. No. 243

Helpers: H. E. Case

W. W. Dixon



Dates of survey April, 1960

Date of recording April, 1960

Distribution

Douglas County Surveyor's Office

W. Co. - Spfld. - Survey File

" " Land Dept.

" Tacoma Land Records

BLM - Roseburg

Reported April 30, 1960

By Marion D. Hale

All corners for this Section are monumentd with Brass Caps set by the Cadastral Surveyor in 1950.

C 1/4 Corner for center Section 5-24S-3W = Point "I".

Set 7/8" x 38" piece of drill steel for corner by the intersection method.

Referenced by Marion D. Hale, Weyerhaeuser method.
Declination 20°

37" Fir N 42° W 29.8'
44" Fir S 73° E 24.3'

✓✓

CE 1/16 Corner for Section 5-24S-3W = Point "H".

Set 1/2" x 36" galvanized iron pipe for corner by the single proportionate method.

Referenced by Marion D. Hale, Weyerhaeuser method.
Declination 20°

34" Fir S 33° W 28.9'
35" Fir N 13° E 8.5'

✓ 2

E 1/16 Corner on North line Section 5-24S-3W = Point "A".

Set 1/2" x 30" glvanized iron pipe for corner by the single proportionate method.

Referenced by Marion D. Hale, Weyerhaeuser method.
Declination 20°

40" Fir N 87° W 65.5'
42" Fir Stp. S 28° E 72.8'

✓

WEYERHAEUSER TIMBER COMPANY CORNER REFERENCE METHOD

A "W" nail driven thru the hole in a brass disc, into a notch cut low on a tree, stamped with the Oregon registered land surveyor or professional engineer registration number. An embossed aluminum plate nailed head high on same tree with 8d aluminum nails, with distance and bearing from the "W" nail to the corner stamped on it.

