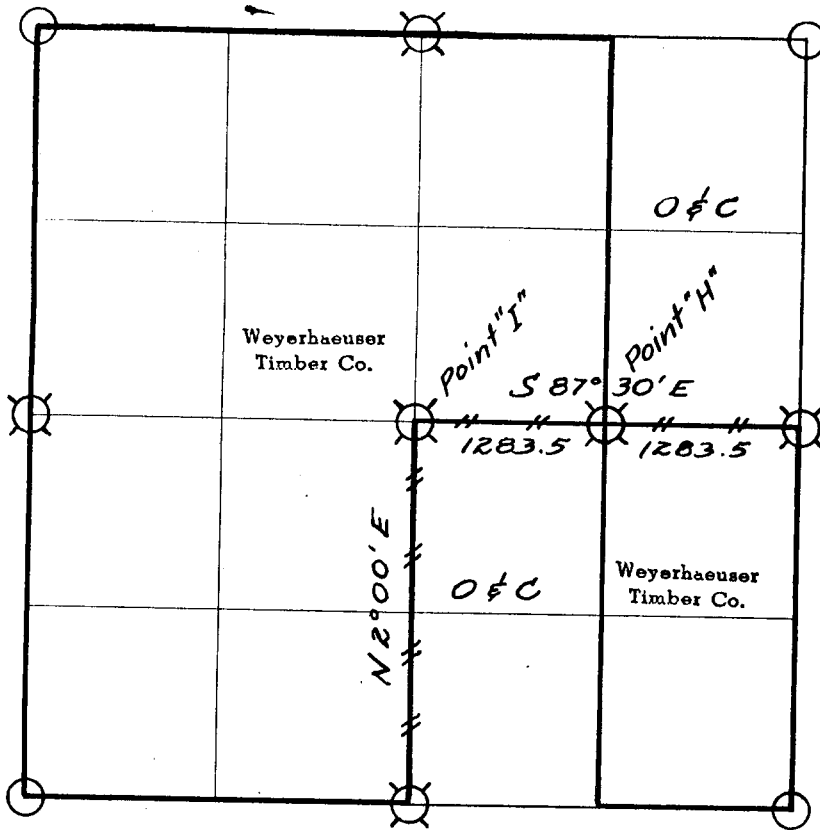


WEYERHAEUSER TIMBER COMPANY

Section 17 Township 24 S Range 3 W



// // Line marked by notch cut in blaze



Known corner

Field Survey: Sutherlin Book #67



Referenced corner

Staff compass and abney slope chain survey.

Bearings based on assumed 20° declination.

This survey was made for Weyerhaeuser Timber Company by Marion Hale, Oregon Registered Land Surveyor, No. 243.

Helper: Richard Baker

Dates of survey JANUARY, 1956

Date filed for record & where JANUARY 15, 1958

Distribution

Douglas County Surveyor's Office

WCo - Springfield Survey File

" - " Land Dept.

" - Tacoma Land Records

BLM - Roseburg

Reported SEPTEMBER 19 57

By _____

17
20

1/4 Corner common to Sections 17 and 20

Dependent Resurvey (US) Record - 1950

1" Galv. iron pipe with brass cap Found

44" Fir	N 84° E	100 lks	O K
6" Madrona	S 78°45'W	78 lks	O K

Referenced previously by Weyerhaeuser Timber Co. April, 1953

17|16

1/4 Corner common to Sections 16 and 17

Dependent Resurvey (US) Record - 1950

1" Galv. iron pipe with brass cap Found

18" Fir	N 6° E	121 lks	Now windfall
22" Fir	N 13° W	283 lks	O K

Referenced previously by Weyerhaeuser Timber Co. April, 1953

18|17

1/4 Corner common to Sections 17 and 18

Dependent Resurvey (US) Record - 1950

1" Galv. iron pipe with brass cap Found

22" Fir	S 49°15'E	33 lks	O K
22" Fir	N 83°15'W	67 lks	O K

Referenced previously by Weyerhaeuser Timber Co. April, 1953

8
17

1/4 Corner common to Sections 8 and 17

Dependent Resurvey (US) Record - 1950

1" Galv. iron pipe with brass cap Found

33" Fir	N 18°15'W	56 lks	O K
18" Maple	S 11° E	17 lks	O K

Referenced previously by Weyerhaeuser Timber Co. April, 1953

C 1/4

Center 1/4 corner Section 17 = Point "I"

Set 3" x 3" x 42" Incense Cedar bark post for corner at intersection of E-W and N-S center lines.

Referenced by Marion Hale (Plates and "W" nails only)
Declination 20°

36" Fir	N 58° E	29.9'
22" Fir	S 20° W	49.3'

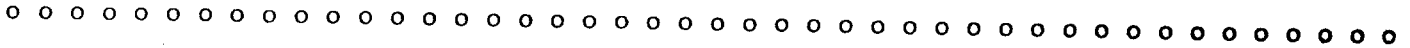
CE 1/16

Corner for Section 17 = Point "H"

Set Hemlock stake for corner by single proportionate method.

Referenced by Marion Hale (Plates and "W" nails only)
Declination 20°

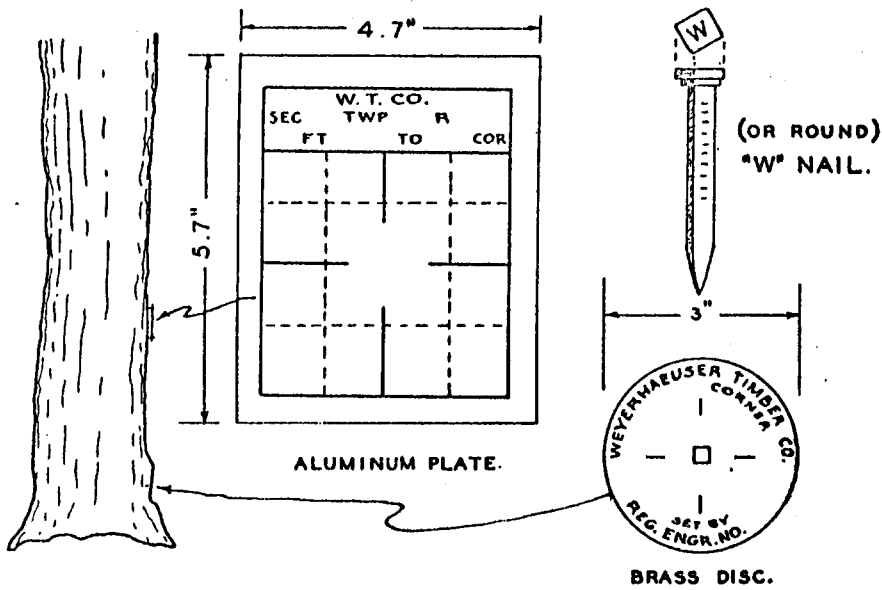
36" Fir	S 63° W	13.5'
7" Fir	N 10° E	6.9'



WEYERHAEUSER TIMBER COMPANY CORNER REFERENCE METHOD

A "W" nail driven thru the hole in a brass disc, into a notch cut low on a tree, stamped with the Oregon registered land surveyor or professional engineer registration number.

An embossed aluminum plate nailed head high on same tree with 8d aluminum nails, with distance and bearing from the "W" nail to the corner stamped on it.



FILED
RECEIVED

JAN 13 1958

COUNTY SURVEYOR
DOUGLAS COUNTY, ORE.