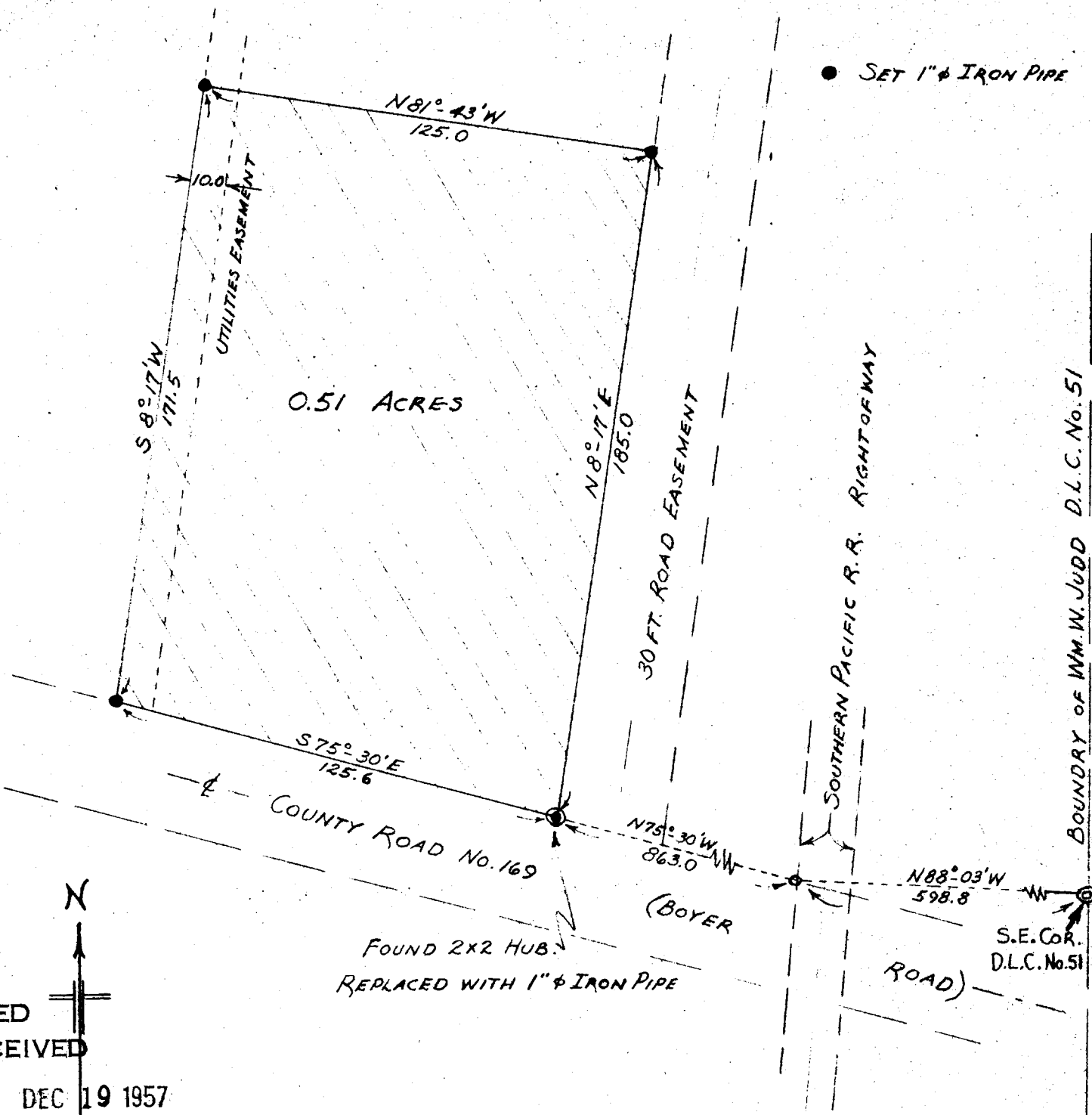


● SET 1"  $\phi$  IRON PIPE



N

FILED  
RECEIVED  
DEC 19 1957

COUNTY SURVEYOR  
DOUGLAS COUNTY, ORE.



NOTE:  
BEARING & DISTANCE TIES  
TO D.L.C. CORNER ARE  
FROM SURVEYS OF RECORD  
& DEED DESCRIPTIONS

PLAT PREPARED FOR  
EDWARD H. FISH, JR.  
RIDDLE, OREGON  
SEC. 13 T30S R6W W.M. DOUGLAS COUNTY, ORE.  
OCTOBER 1957 SCALE: 1" = 40' DON R. MARTIN

COUNTY SURVEYORS FILE DATA  
DO NOT REMOVE FROM OFFICE