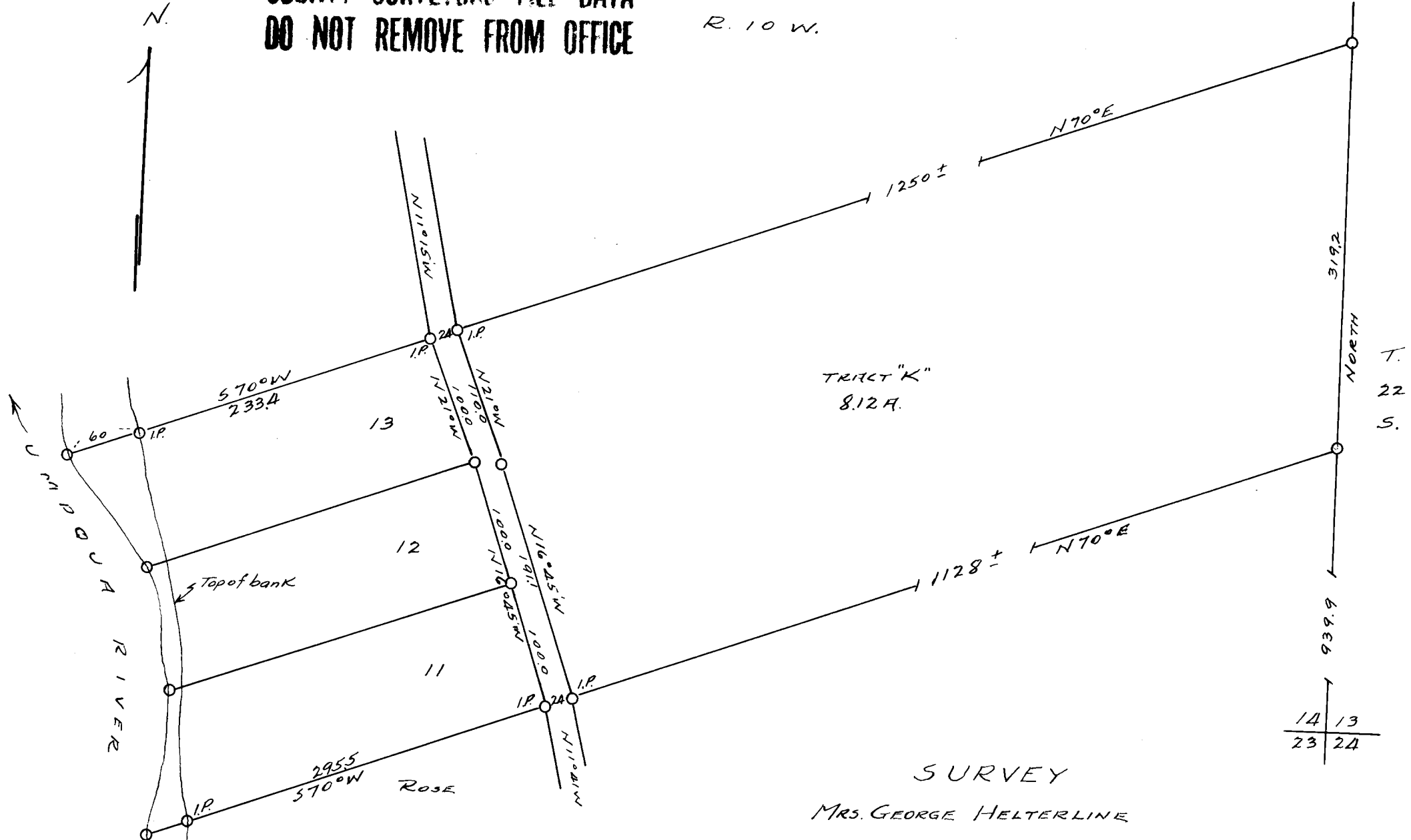


COUNTY SURVEYORS FILE DATA
DO NOT REMOVE FROM OFFICE

R. 10 W.



TRACT "K"
8.12 A.

SURVEY

MRS. GEORGE HELTERLINE
S.E. 1/4 SEC. 14, T. 22 S. R. 10 W. W.M.
DOUGLAS COUNTY
Scale 1"=100' Aug. '57.

FILED
RECEIVED
AUG 10 1957
COUNTY SURVEYOR
DOUGLAS COUNTY, ORE.



C. S. File No. 42/311