

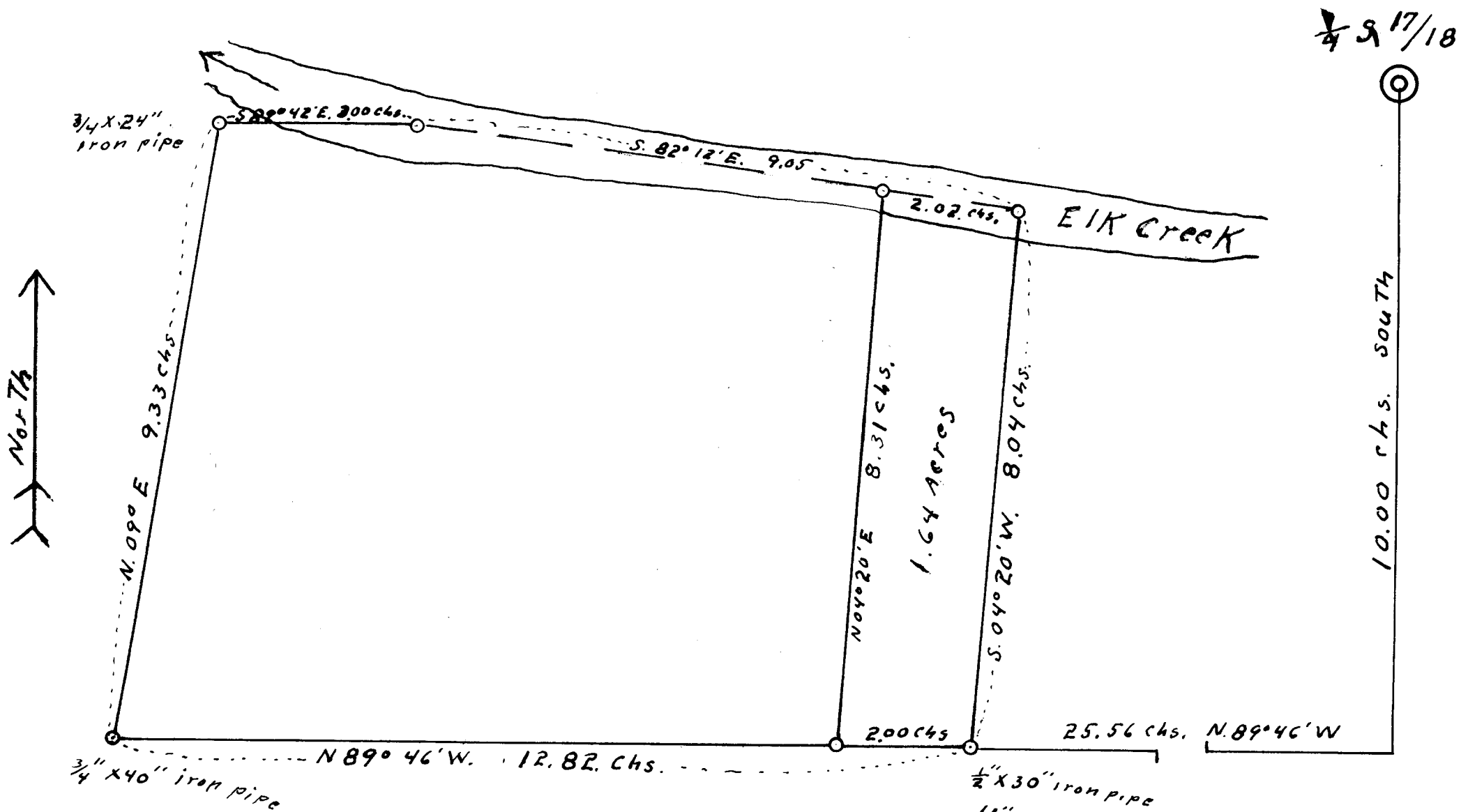
COUNTY SURVEYORS FILE DATA
DO NOT REMOVE FROM OFFICE

T 22 S R 5 W. W.M. Sect. 18

Scale 1" = 200 chs

Aug 20, 1957

DRAWN from a description by Thiel 1950.



REGISTERED
OREGON
LAND SURVEYOR

Wilford N. Haines

MAY 7, 1948
WILFORD N. HAINES
239

FILED
RECEIVED

AUG 20 1957

COUNTY SURVEYOR
DOUGLAS COUNTY, ORE.

C. S. File No. 42/310-1