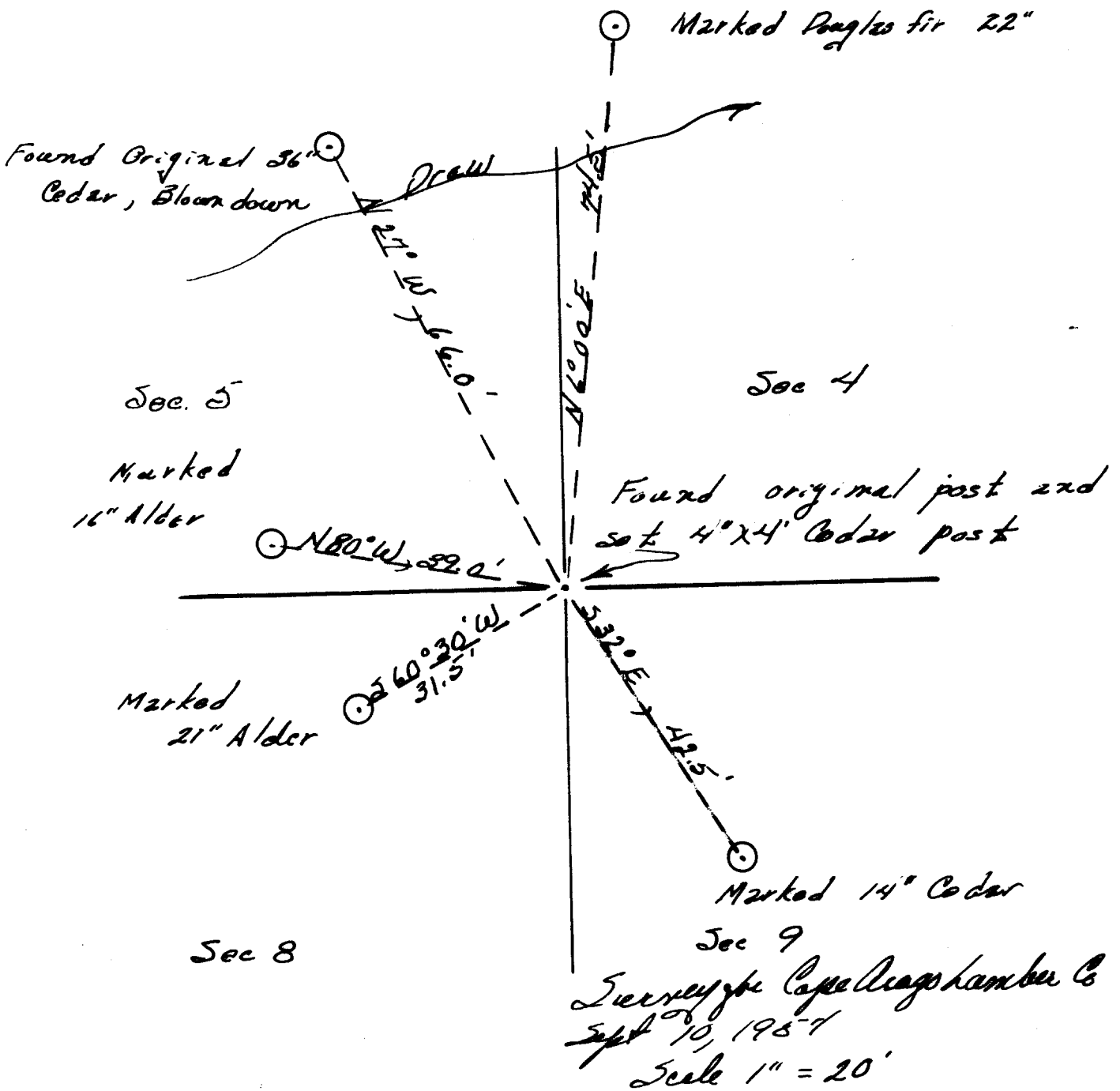


Plat of Restoration of Section Corner
 Common to Sections 4, 5, 8 + 9
 T20S., R.11W., W.M.



FILED
 RECEIVED

SEP 27 1957

COUNTY SURVEYOR
 DOUGLASS COUNTY, ORE.

REGISTERED
 OREGON
 LAND SURVEYOR

Warren D. Hootman

MAY 10, 1957
 WARREN D. HOOTMAN
 399

C.S. File No. 42/305-

Notes for the Restoration of the Section Corner Common to
Sections 4,5,8, and 9, T.20S., R.11W, WM. Douglas County, Oregon

At the Section corner common to Sections 4,5,8, and 9, T20S,
R.11W., WM. I find the remains of the original corner post.

I also find the original cedar bearing tree in Section 5,
which is blown down and the scribing is almost gone.

I set a 4" X 4' cedar post next to the original corner post,
and scribe four new bearing trees.

A western red cedar 14" DBH, bears $\overset{S}{2}32^{\circ}00'E$. a distance of
42.5 feet.

An Alder 21" DBH bears $\overset{S}{2}60^{\circ} 30'W$. a distance of 31.5 feet.

An Alder 16" DBH bears $N.80^{\circ}00'W$. a distance of 39.0 feet.

A Douglas fir 22" DBH bears $N.6^{\circ}00'E$. a distance of 74.5 feet.

At the 1/4 corner common to Sections 5 and 8, T20S., R.11W.
WM. I find the stump of the original bearing trees, scribing
is barely visible on the Section 8 bearing tree and no scribing
is apparent on the remains of the Section 5 bearing tree.

I reset the corner from there bearing trees at the original
distance^s, which agree. This corner lays on top of a ridge as
called for in the original notes.

For the 1/4 corner I set a 1" X 36" galvanized iron pipe
from which:

FILED
RECEIVED

SEP 27 1957

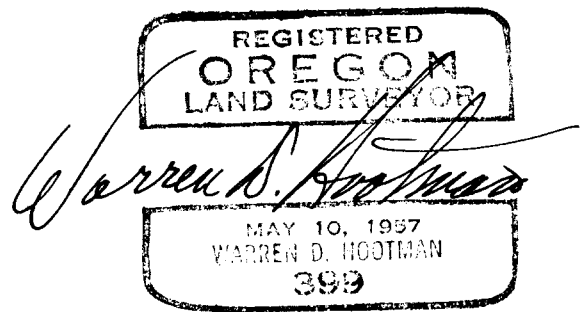
COUNTY SURVEYOR
DOUGLAS COUNTY, ORE.

C.S. 42/305-3b

An Alder 11" DBH bears N41°00'E. a distance of 3.0 feet.

An Alder 9" DBH bears S82°00'E a distance of 4.4 feet.

This Survey was made for Cape Arago Lumber Company on Sept. 10, 1957



FILED
RECEIVED

SEP 27 1957

COUNTY SURVEYOR
DOUGLAS COUNTY, ORE.

42/305-3c