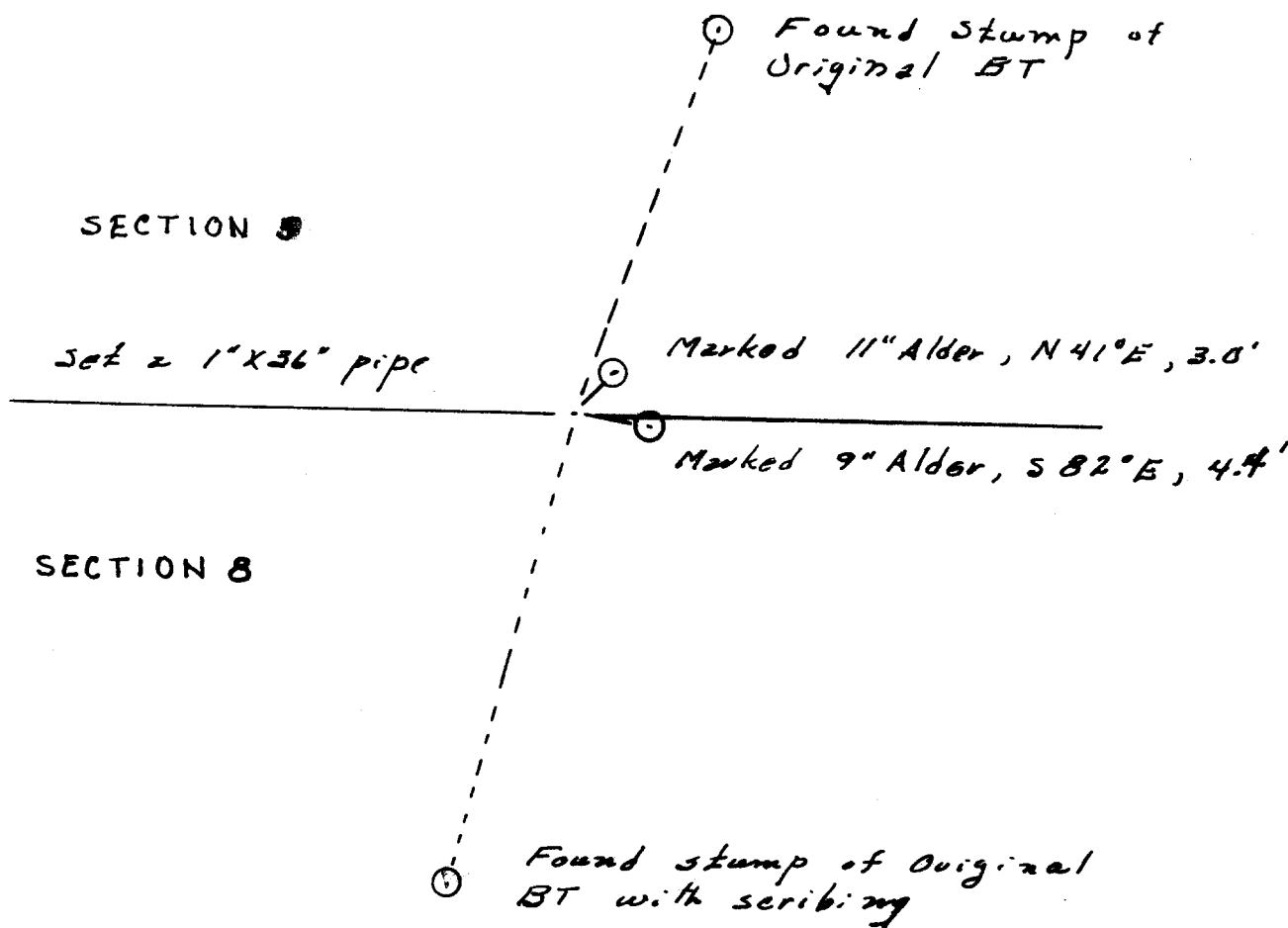


Plat of Restoration of  
the 1/4 Corner Common  
to Sections 5 and 8  
T.20S., R.11W. W.M.



Survey made for Cape Royal  
Lumber Co. Sept. 10, 1957  
Scale 1" = 10'

FILED  
RECEIVED

SEP 27 1957

COUNTY SURVEYOR  
DOUGLAS COUNTY, ORE



*Warren D. Robinson*

