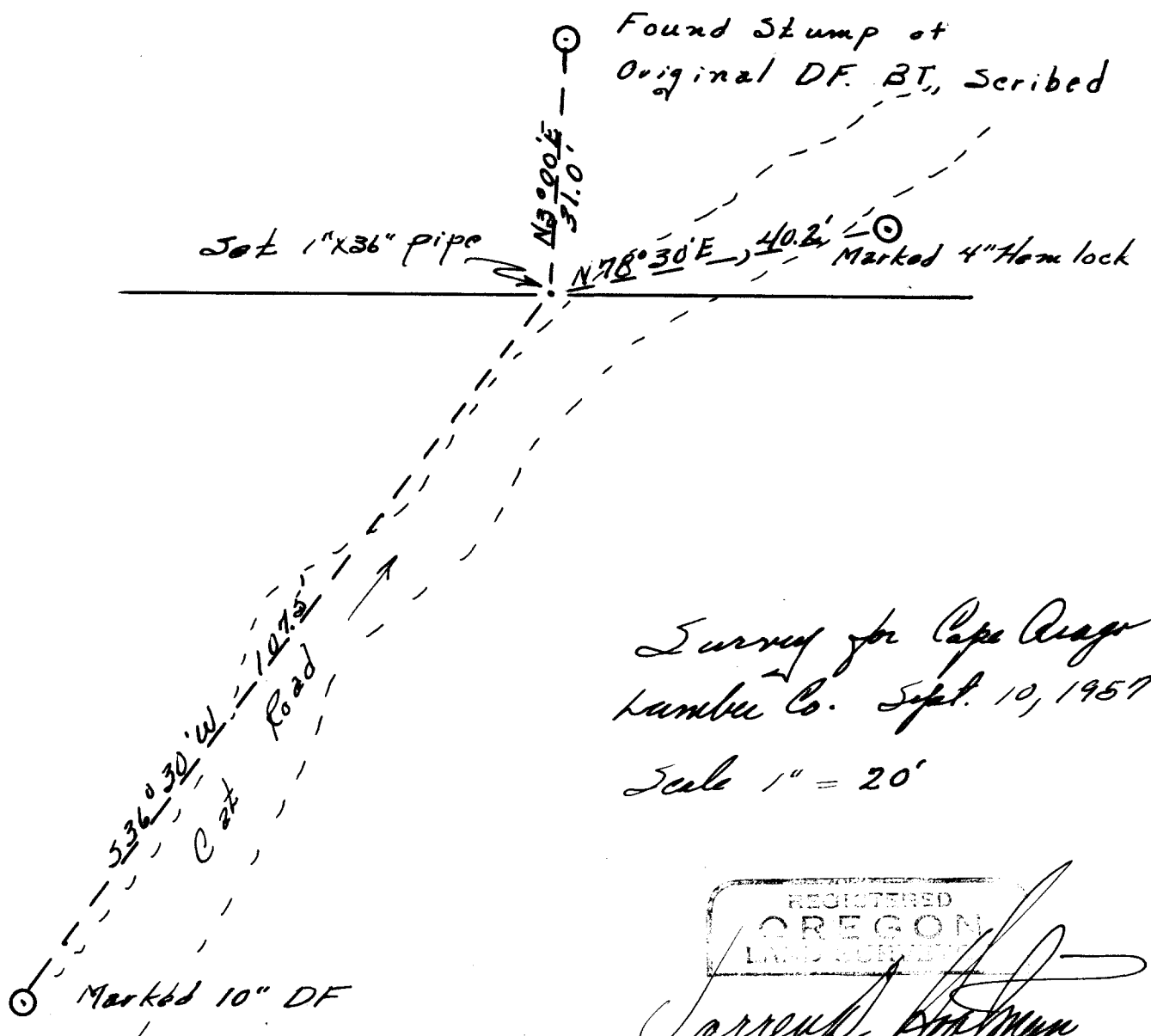


Restoration of 1/4 Corner Common
 to Sections 11 and 14, T.22 S.,
 R.12 W., W.M.



Survey for Cape Arago
 Humboldt Co. Sept. 10, 1957
 Scale 1" = 20'

REGISTERED
 OREGON
 LAND SURVEYOR
 J. J. [Signature]
 MAY 10, 1957
 WILSON D. [Signature]
 392

FILED
 RECEIVED

SEP 27 1957

COUNTY SURVEYOR
 DOUGLAS COUNTY, ORE.

Notes For Restoration of the 1/4 Corner Common to Section 11
and 14, T.22S, R.11W., WM. Douglas County, Oregon

I reset the 1/4 corner common to sections 11 and 14, T22S.,
R11W.WM.

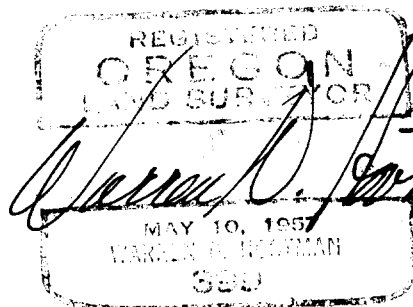
I find the stump of the original bearing tree for Section 11.
Part of the scribing is still visible. The stump in Section 14
is gone and its position is in a cat road.

I set a 1" X 36" galvanized iron pipe at the call distance
from the original bearing tree stump and marked two new bearing
trees as follows.

From the corner a:

Douglas fir 10" DBH, bears ^S236° 30'W. a
distance of 107.5 feet and a Hemlock
4" DBH bears N78° 30'E. a distance of
40.2 feet

This survey was made for Cape Arago Lumber Company on Sept. 10, 1957



FILED
RECEIVED

SEP 27 1957

COUNTY SURVEYOR
DOUGLAS COUNTY, ORE.