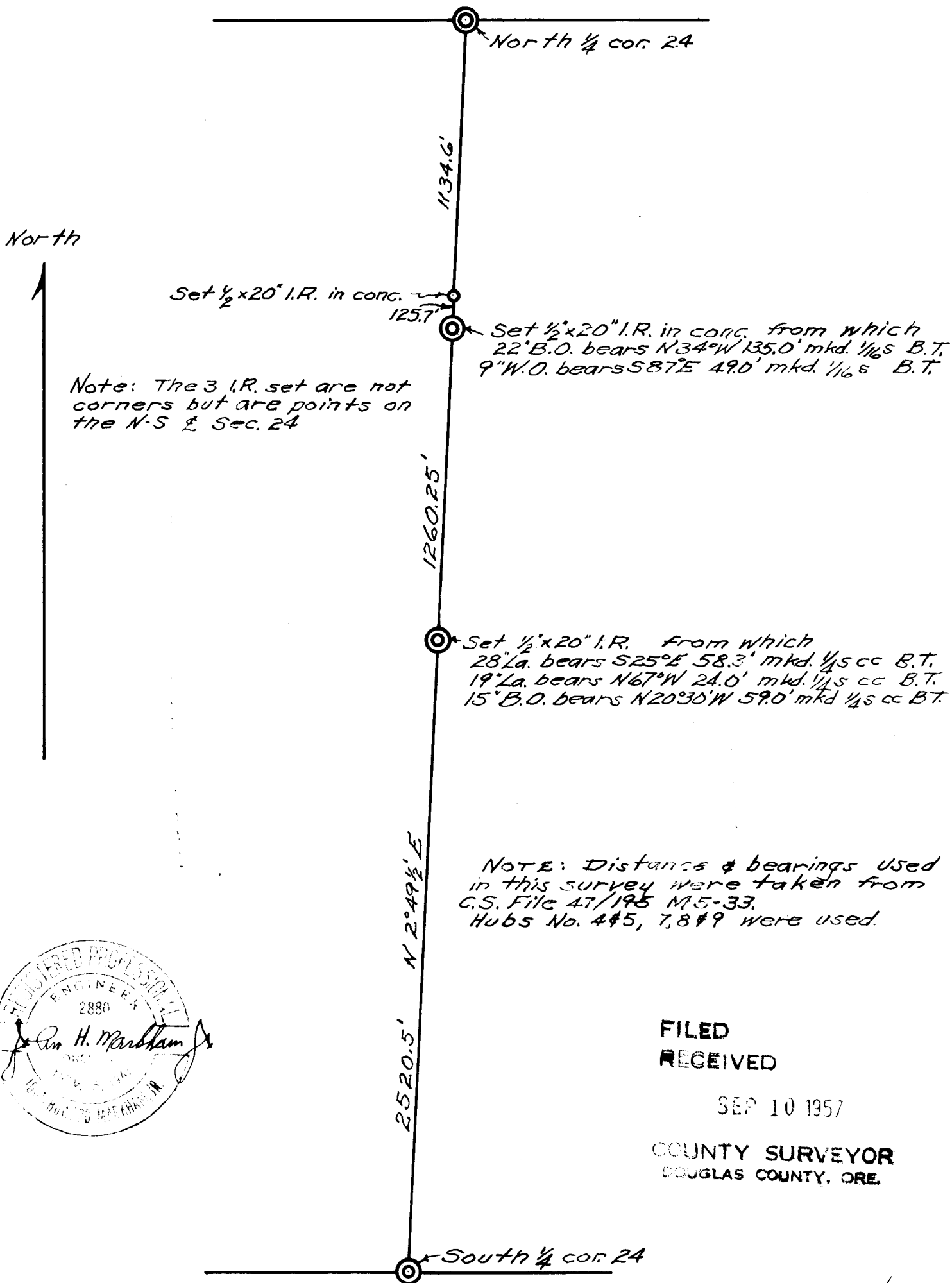


COUNTY SURVEYORS FILE DATA
DO NOT REMOVE FROM OFFICE

Prepared for
~ STOMAR LBR. Co. ~
Showing N-S & Sec. 24 T29S R6W W.M.
Scale 1" = 500' Sept. 9, 1957



FILED
RECEIVED

SEP 10 1957

COUNTY SURVEYOR
DOUGLAS COUNTY, ORE.

C. S. File No. 42/300