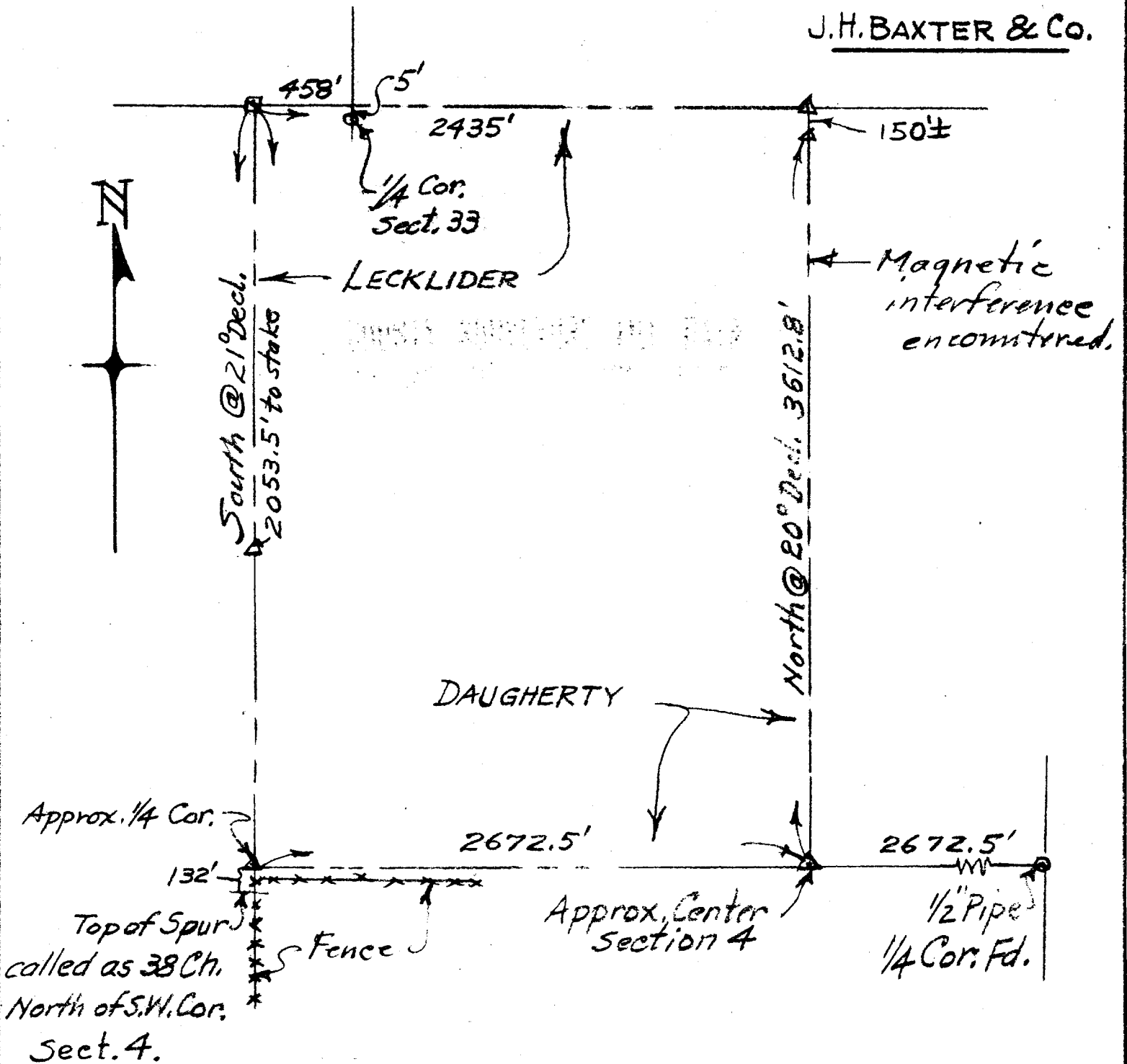


APPROXIMATE LINES N.W. 1/4 SECT. 4 T30S R4W
DOUGLAS COUNTY, ORE.

J.H. BAXTER & Co.



NOTE: Lines were run as shown above as personally requested and directed to locate approximate cutting lines.

SCALE 1" = 10 CHAINS

JAMES R. DAUGHERTY
CIVIL-SANITARY ENGINEER
ROSEBURG - ORE.

AUG. 1957.

