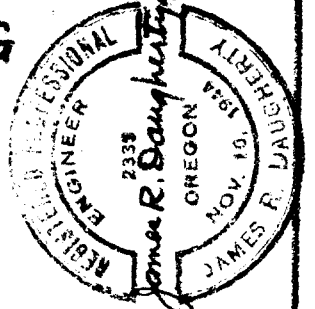


LOT 1-BL. 92-4TH SOUTHERN ADDITION TO ROSEBURG
DOUGLAS COUNTY- OREGON

Robert Allen

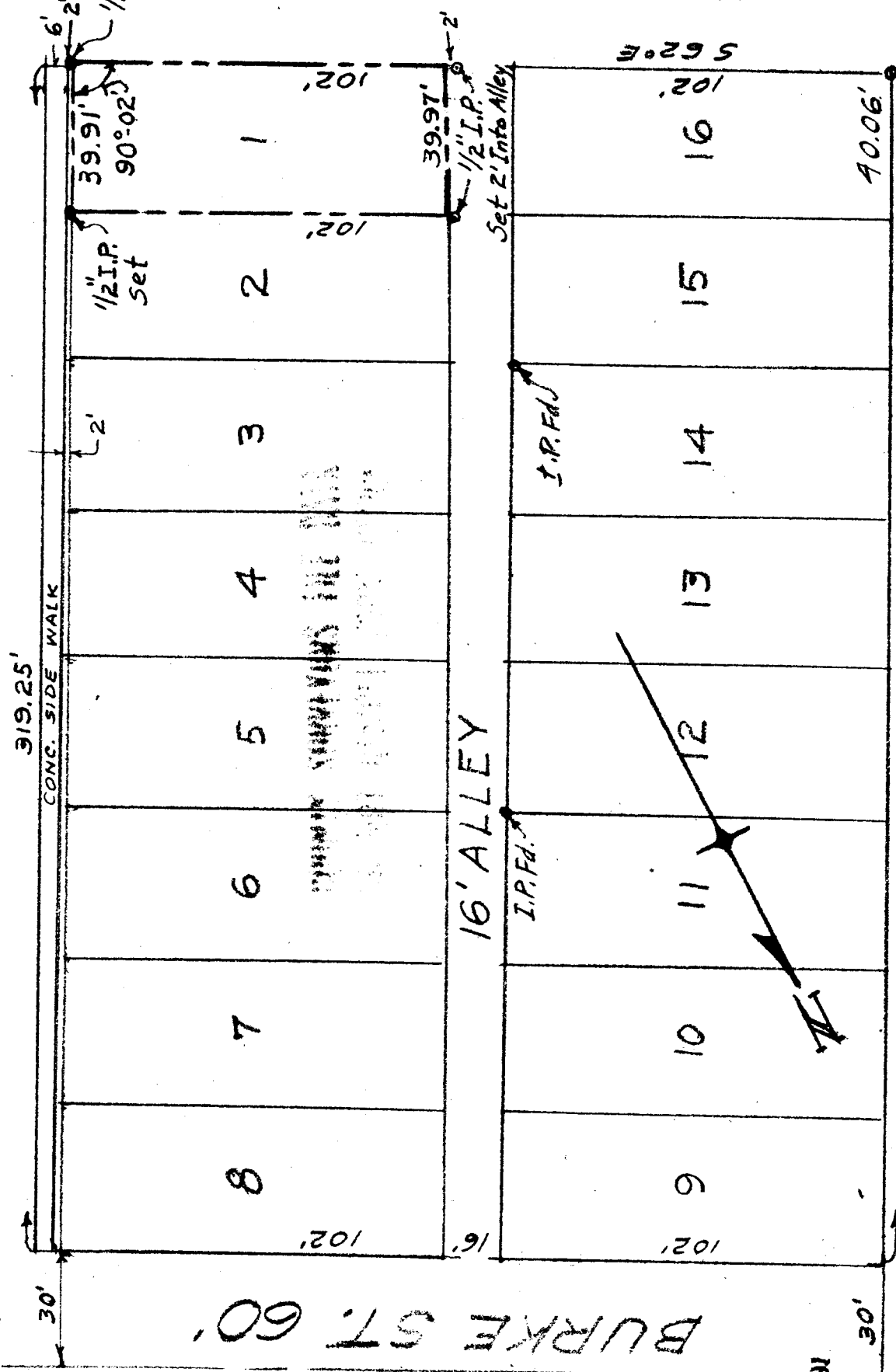


SOUTH STEPHENS ST. 60'

SOUTH ST-NOW-RICE ST. 60'

BURKE ST. 60'

SOUTH PINE ST. 60'



2" Pipe
Set by Epstein

SURVEYED BY
JAMES R. DAUGHERTY
CIVIL-SANITARY ENGINEER
ROSEBURG, ORE.

SCALE 1"=40'
AUG. 27, 57.