

T305 RBW Sec. 18

July 29, 1957

Kitchell M.S. #305 Corner #2

and #4 which are common as det.
by O.B.T. and Old mom. — at a

point 576.0' S 45° W from corner

3+5 I found old post in mound
of stone — a burnt out stump
hole bears N 68° E 14.2' dist.

At corner point set brass
cap in concrete mkd. M.S. 2 & 4
T305 RBW 2880 1957.

from which

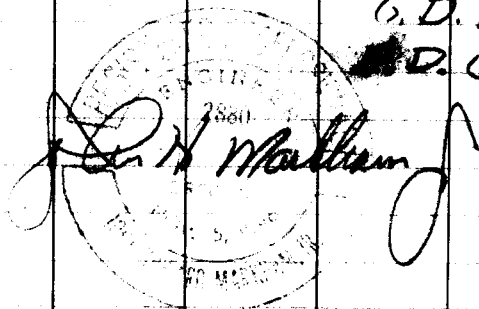
A 7" Fir bears S 11° W 35.5' dist.
mkd. M.S. 305 B.T.

A 8" Fir bears N 46° W 19.7' dist. mkd.
M.S. 305 B.T.

Witness:

G. D. Myers

D. Jenks

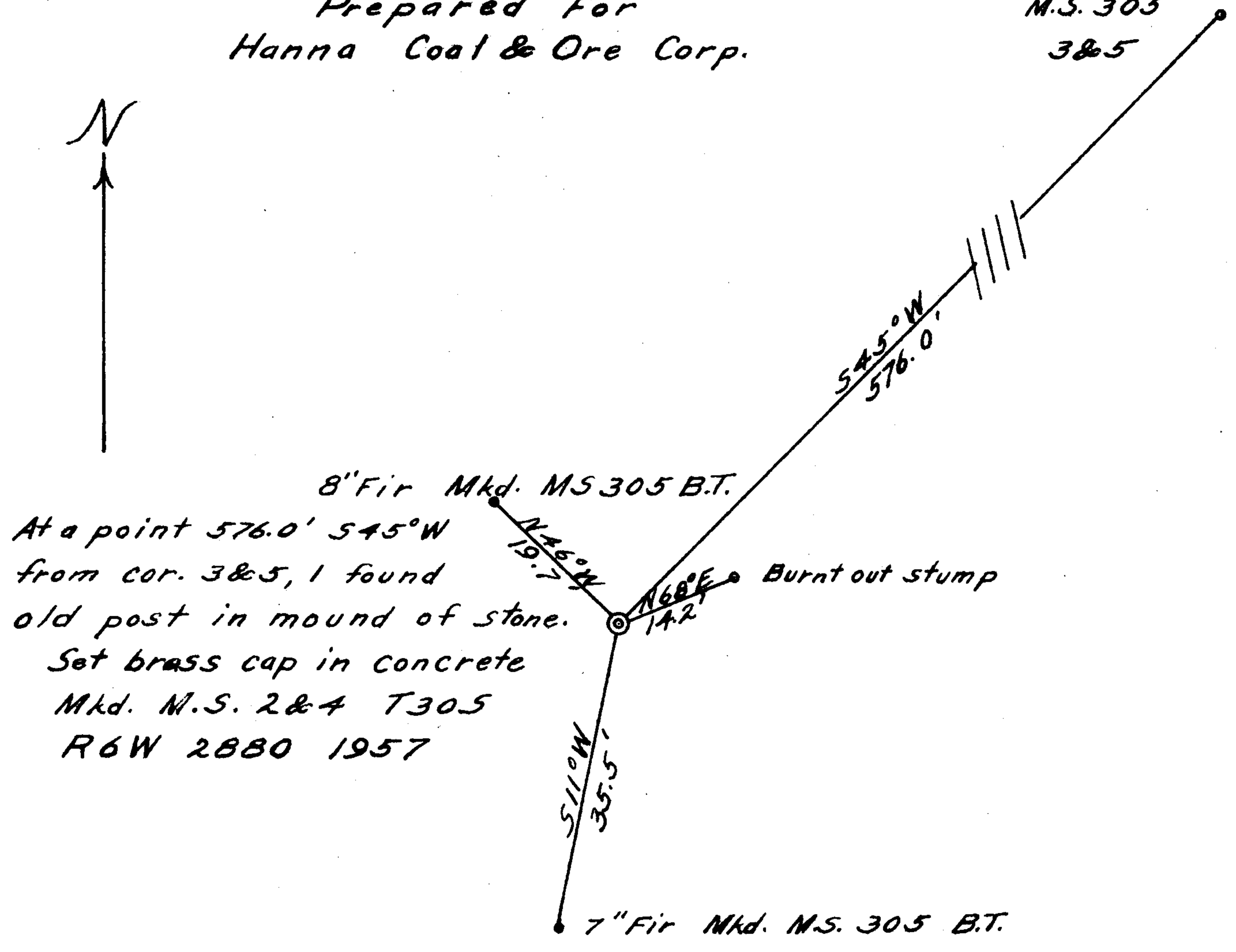
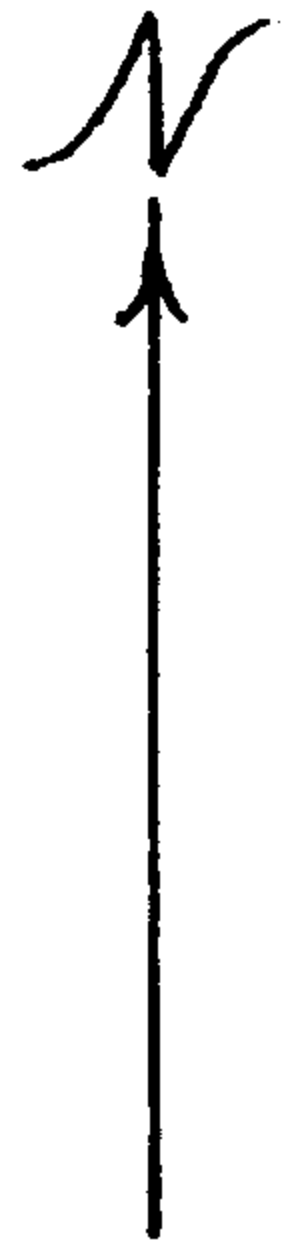


Work done for Hanna Coal + Ore

C. S. File No. 42/288-15

Prepared For
 Hanna Coal & Ore Corp.

Corner
 M.S. 305
 3&5



8" Fir Mkd. MS 305 B.T.
 At a point 576.0' S 45° W
 from cor. 3&5, I found
 old post in mound of stone.
 Set brass cap in concrete
 Mkd. M.S. 2&4 T 305
 R 6 W 2880 1957

John H. Mackay

