

T305 RBW Sec. 18

Aug. 18, 1957

Kitchell M.S. #305 Corner

#3 plus 2 as det. by field notes:

At a point 233' N 45° E from Corner #3 I found large pile of stone and set brass cap in concrete mkd. M.S. 305

#3 + 2 T305 RBW 2880 1957.  
From which

A 18" Cedar bears N 32½° W  
36.3' dist. mkd. M.S. X B.T.

A 7" Fir bears N 83° E 7.0' dist.  
mkd. M.S. X B.T.

Witness:

E. D. Jenks

G. D. Myers



*E. D. Jenks*

Work done for Hanna Coal & Ore. Co.

C. S. File No. 42/288-13

BY J.H.M. JR. DATE 8-18-57

SUBJECT Kitchell M.S. 305

SHEET NO. OF

CHKD. BY DATE

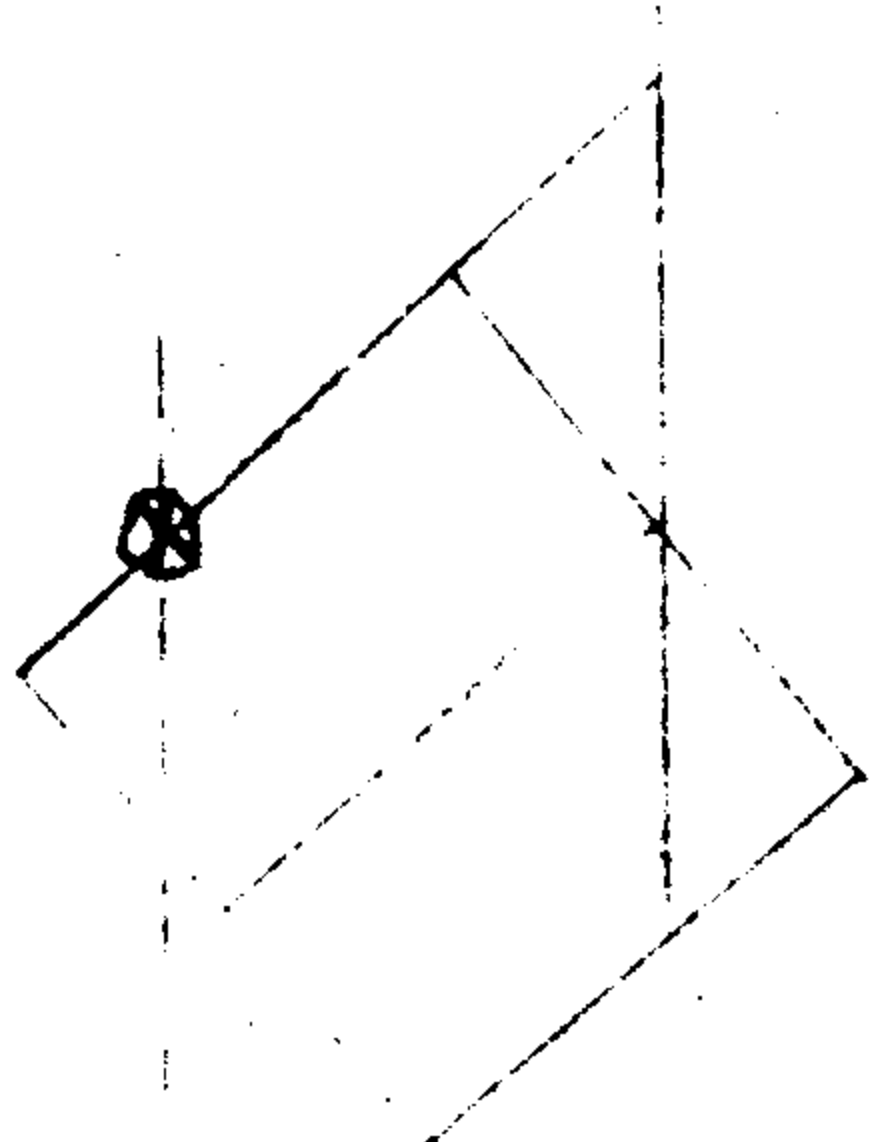
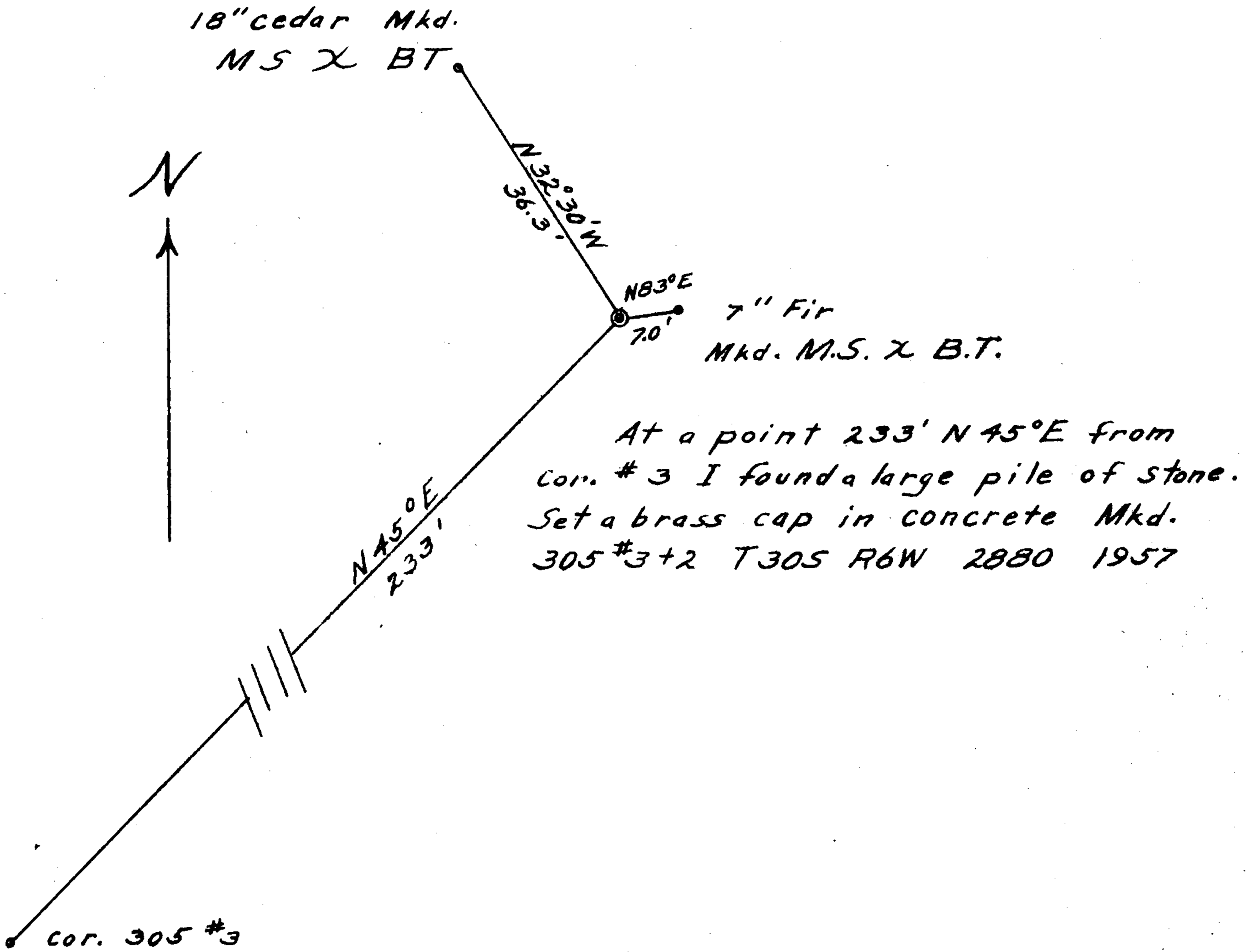
Corner 3+2

JOB NO.

Scale 1"=10'

As det. by field notes

Prepared For  
Hanna Coal & Ore Corp.



*J. H. M. Jr.*