

T305 RBW Sec. 18

Aug. 1, 1957

Kitchell N.S. #305 Corner

#2 plus 1 as det. by field notes. - A 30" Fir S56E 57.0' fd. scribe

At a point 233.0' S45°E from corner #3 I set brass cap in concrete mkd. N.S. 305 2+1 T305 RBW 2880 1957

from which

A 5" Cedar bears S33°W 17.0' dist mkd. N.S. 2+1 B.T.

A 10" Pine bears N24°E 6.7' dist. mkd. N.S. 2+1 B.T.

Witness:

E. D. Jenks

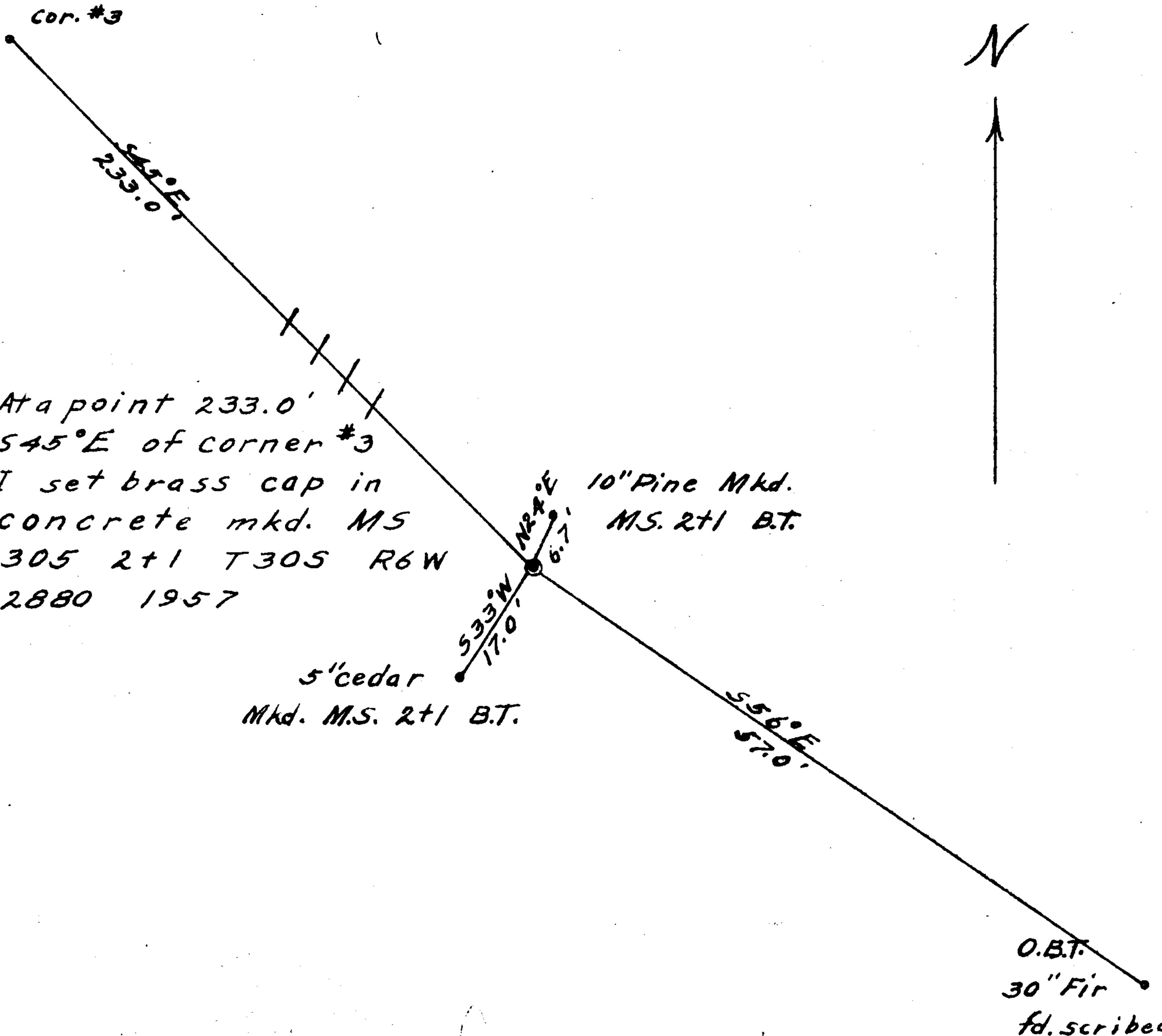
G. D. Myers

[Signature]

Work done for Hanna Coal & Ore Co.

C. S. File No. 42/288-12

Prepared For
Hanna Coal & Ore. Corp.



John H. Maitland

