

T.305-R6W-Sec. 18

Aug. 1, 1957

Emerald Lode Claim Corner  
No. #2. as det. by O.B.T.

A 30" Pine bears N28°W 96.0'  
dist. found scribe.

A 26" Pine Stump (logged) bears  
N 47½° E 31.7' O.B.T.

At corner point set brass  
cap in concrete mhd. E.M.C.  
# 2 T305 R6W 2880 1957.  
from which

A 15" Cedar bears N80°W 45.5'  
dist. mhd. N.S. 305 #2 B.T.

A 22" Fir bears N82°E 30.6'  
dist. mhd. N.S. 305 B.T.

Witness

G. D. Myers

E. D. Jenks

*[Signature]*

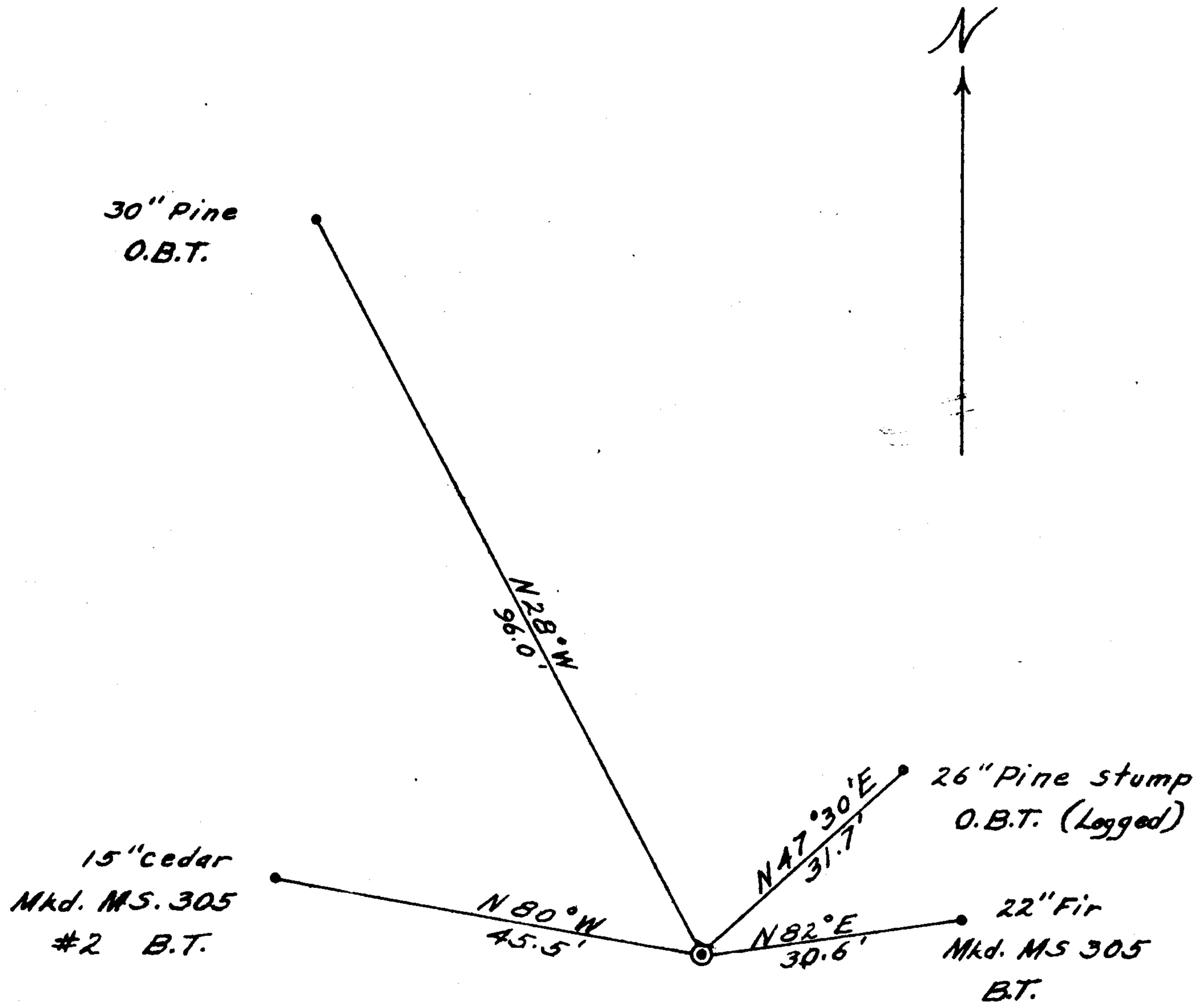
Work was for Hanna Coal & Ore.

G. D. Myers 42/288-3

BY J.H.M. Jr. DATE 8-1-57 SUBJECT Emerald Lode Claim  
 CHKD. BY \_\_\_\_\_ DATE \_\_\_\_\_ Corner #2  
 Scale 1" = 20' As det. by O.B.T.

SHEET NO. \_\_\_\_\_ OF \_\_\_\_\_  
 JOB NO. \_\_\_\_\_

Prepared For  
 Hanna Coal & Ore. Corp.



- At corner set brass  
 cap. in concrete mkd.  
 E.M.C. #2 T305 R6W  
 2880 1957

*J.H.M. Jr.*

