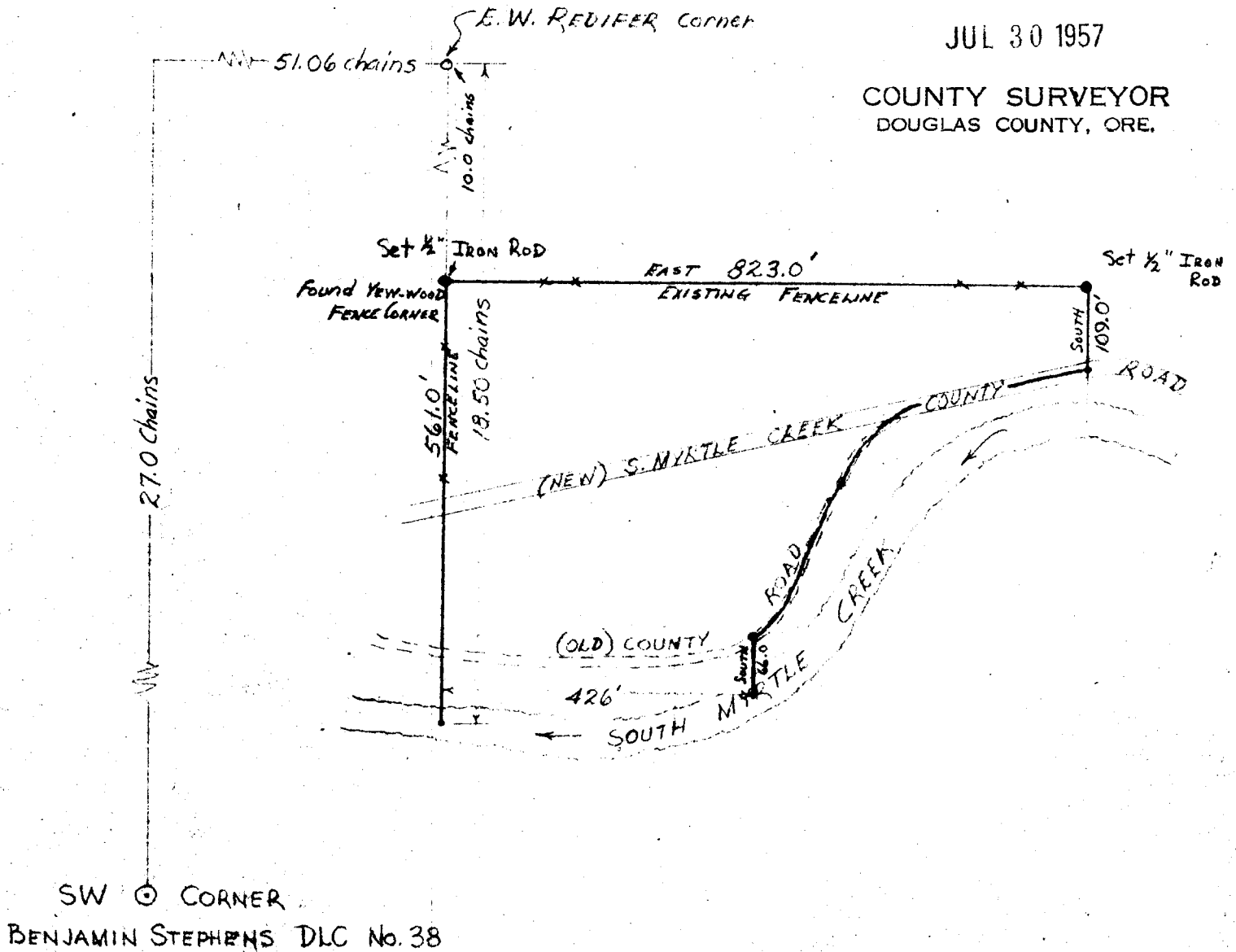


FILED
RECEIVED

JUL 30 1957

COUNTY SURVEYOR
DOUGLAS COUNTY, ORE.



PLAT
PREPARED FOR
LEROY McCRACKEN
SEC. 22 T29S R4W WM
DOUGLAS COUNTY, OREGON
SCALE: 1" = 200' MAR. 1956

COUNTY SURVEYORS FILE DATA
DO NOT REMOVE FROM OFFICE

C.S. File No. 42/285